

**Danube Commission**  
**Expert Group on Hydrotechnical Issues**

**The Upgrade of the Iron Gate I  
Navigational Lock**

**Jasna Muskatirovic**

Head of Department for Fairway Information Services, River Information  
Services, Planning and Implementation of EU funded Projects  
Ministry of Construction, Transport and Infrastructure  
**Directorate for Inland Waterways (Plovput)**, Republic of Serbia

---

**Budapest, 21<sup>st</sup> of March 2017**

Geo information

Basic Lock Information

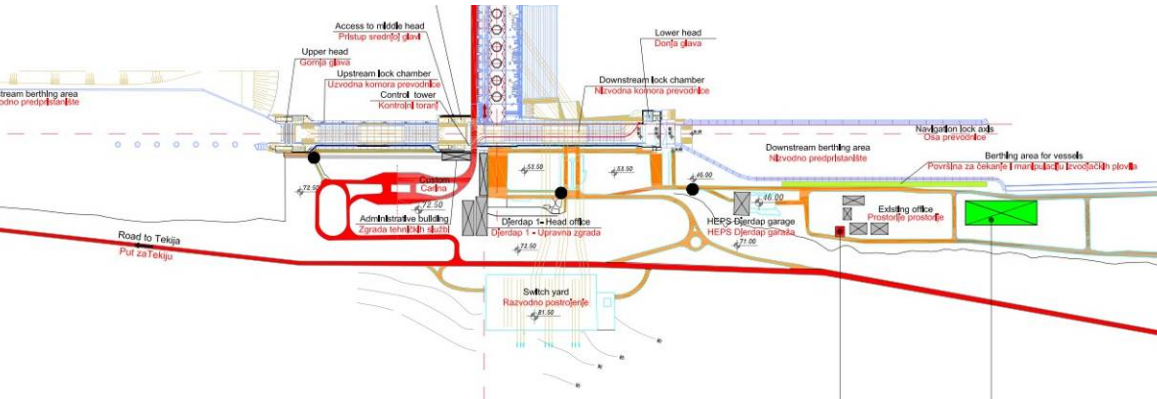
Current status of the lock

Necessary interventions

Project proposal information

Summary

# Geo Information



# Basic Lock information

**Djerdap I (Iron Gate I) navigational lock at glance**

**Location: the Danube River, rkm 943**

**Erected in: 1972**

**CEVNI waterway class: VII**

**Number of chambers: 2**

**Upstream fore-dock width: 100 m**

**Width of chambers: 34 m**

**Upstream fore-dock length: 580 m**

**Length of chambers: 310 m**

**Downstream fore-dock width: 100 m**

**Height available at middle head for passing: 9.5-13.5 m**

**Downstream fore-dock length: 550–585 m**



# Current status of the Lock

Year	Number of days of downtime
2012	10
2013	151
2014	31
2015	152
2016	92
Average	87



# Necessary interventions

- Upgrade of electro-hydraulic drive equipment of the door and gate with the control system
- Upgrade of electro-hydraulic drive equipment of crane rails
- Reconstruction of cable and pipe ducts along the lock chambers
- Control tower construction works
- Operating rooms construction works
- Upgrade of traffic signalization
- Reconstruction of heating and air conditioning of operating rooms and the control tower
- Reconstruction of exterior and interior lighting
- Upgrade of equipment for stable fire protection system
- Sector gates
- Hydraulic pressure pliers
- Works at the downstream fore-dock
- Revitalization of outage double doors
- Revitalization of exterior cranes
  
- Supervision of works



# Project proposal information

<b>Country:</b>	Republic of Serbia
<b>Applicant:</b>	Ministry of Construction, Transport and Infrastructure
<b>Corridor:</b>	Rhine-Danube
<b>Location:</b>	The Danube River, rkm 943
<b>Timeframe:</b>	07/2017 – 12/2020



# Project proposal information

	EUR	%
<b>Estimated value</b>	<b>28.5 Million</b>	<b>100%</b>
<b>Requested EU funding (CEF)</b>	<b>11.4 Million</b>	<b>40%</b>
<b>National co-funding</b>	<b>17.1 Million</b>	<b>60%</b>

## Letters of Support

- Federal Ministry for Transport, Innovation and Technology of Austria
- Ministry of Transport of Romania
- European Federation of Inland Ports
- Pro Danube International
- Uniworld
- International Sava River Basin Commission
- Inland Navigation Europe
- European Barge Union
- European Skippers' Organization
- Danube Commission
- RSR Schifffahrt AG
- River Advice
- EUSDR PA 1a
- IG River Cruise





# Project proposal information

## Indicative Call Timeline

<b>Call opening</b>	13 October 2016
<b>Deadline for submission</b>	7 February 2017 (17:00:00 Brussels time)
<b>Evaluation of proposals</b>	February-May 2017
<b>Consultation of the CEF Coordination Committee / Information to the European Parliament</b>	June 2017
<b>Adoption of the Selection Decision</b>	July 2017
<b>Preparation and signature of individual grant agreements</b>	As of July 2017

# Summary

Geo information

Basic Lock Information

Current status of the lock

Necessary interventions

Project proposal information

**Danube Commission**  
**Expert Group on Hydrotechnical Issues**

**Thank you**  
**for your kind attention**

**Jasna Muskatirovic**

Head of Department for Fairway Information Services, River Information  
Services, Planning and Implementation of EU funder Projects

Ministry of Construction, Transport and Infrastructure

**Directorate for Inland Waterways (Plovput), Republic of Serbia**

---

**Budapest, 21<sup>st</sup> of March 2017**