



Waterwegen en Zeekanaal NV  
weg van water

# Intermodal Links to the Danube Estuary (ILDE)

## Waterwegen en Zeekanaal NV (W&Z)



Ir. Leo Clinckers  
Chief Executive Officer (CEO)  
Waterwegen en Zeekanaal NV



Waterwegen en Zeekanaal NV  
weg van water

# Waterwegen en Zeekanaal NV Intermodal Links to the Danube Estuary



**Europese waterwegen**  
European waterways

kaart | map

**Legende**  
Legend

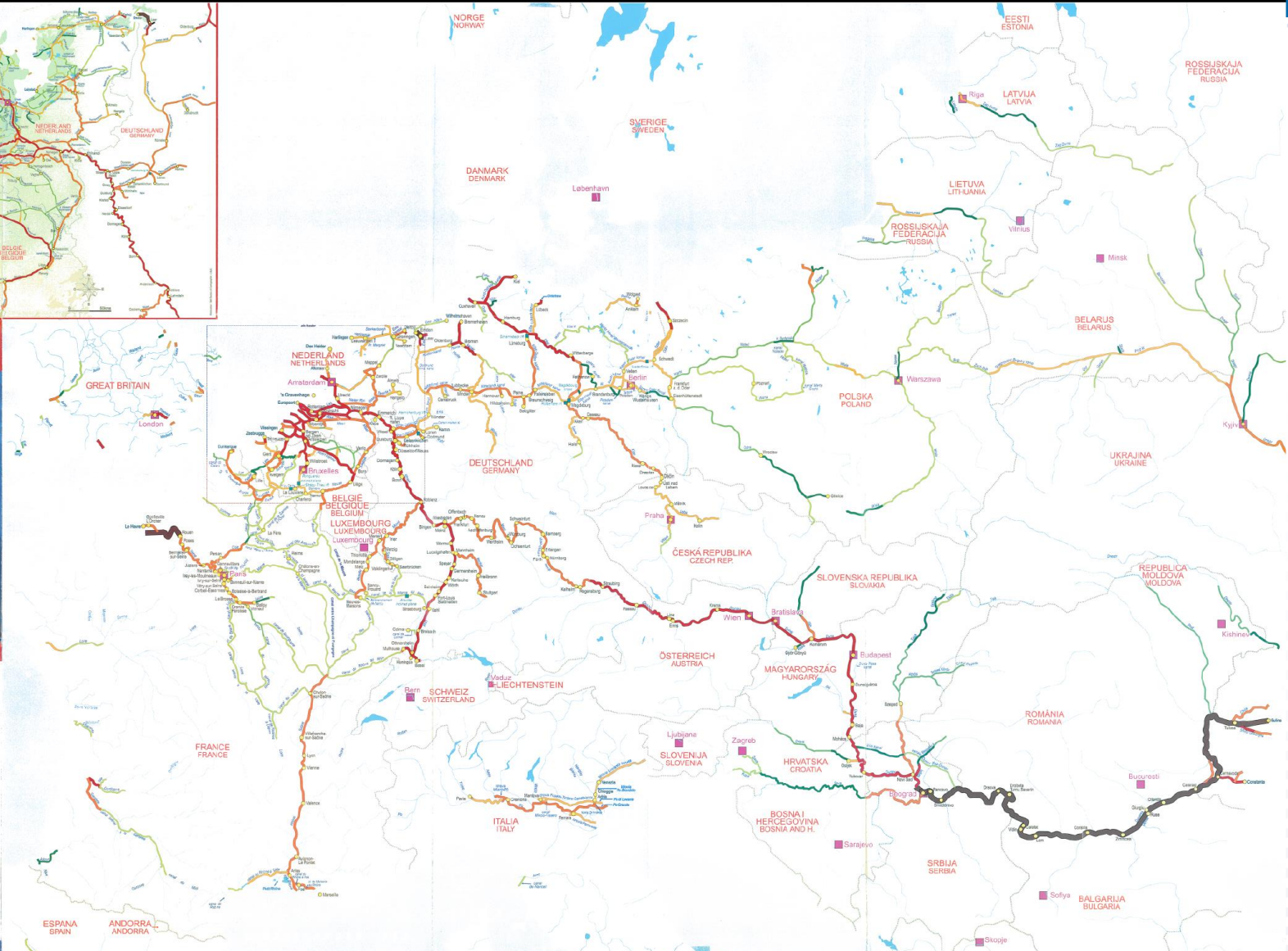
BELGE	Land	Country
	Hoofdstad	Capital
	Stad	Port
	Overschakel referentiepunt	Remarkable water crossing reference

**Klassen van bevaarbare waterwegen (CEMT)**  
Classes of navigable waterways (CEMT)

- Klasse VII: keelvlak van 14.500 ton tot 27.000 ton  
Class VII: keelvlak from 14.500 tons to 27.000 tons
- Klasse VI: keelvlak van 3.200 ton tot 18.000 ton  
Class VI: keelvlak from 3.200 tons to 18.000 tons
- Klasse V: schepen van 500 tot 3.000 ton  
keelvlak van 1.600 tot 6.000 ton  
Class V: schepen from 500 to 3.000 tons  
keelvlak from 1.600 to 6.000 tons
- Klasse IV: schepen van 100 tot 1.000 ton  
keelvlak van 1.250 tot 1.450 ton  
Class IV: schepen from 100 to 1.000 tons  
keelvlak from 1.250 to 1.450 tons
- Klasse III: schepen van 400 tot 1.000 ton  
keelvlak van 600 tot 1.000 ton  
Class III: schepen from 400 to 1.000 tons  
keelvlak from 600 to 1.000 tons
- Klasse II: schepen van 400 tot 400 ton  
keelvlak van 250 tot 400 ton  
Class II: schepen from 400 to 400 tons  
keelvlak from 250 to 400 tons
- Klasse I: schepen van 250 tot 400 ton  
keelvlak van 250 tot 400 ton  
Class I: schepen from 250 to 400 tons  
keelvlak from 250 to 400 tons

Waterwegen niet geschikt voor de betrekking of niet bevaarbaar  
Waterways not designated for transport or unnavigable

Publiek Brnoordse Waterdienst | Annual Report 2013 | 200 tonnen  
© Foto: www.danube.eu

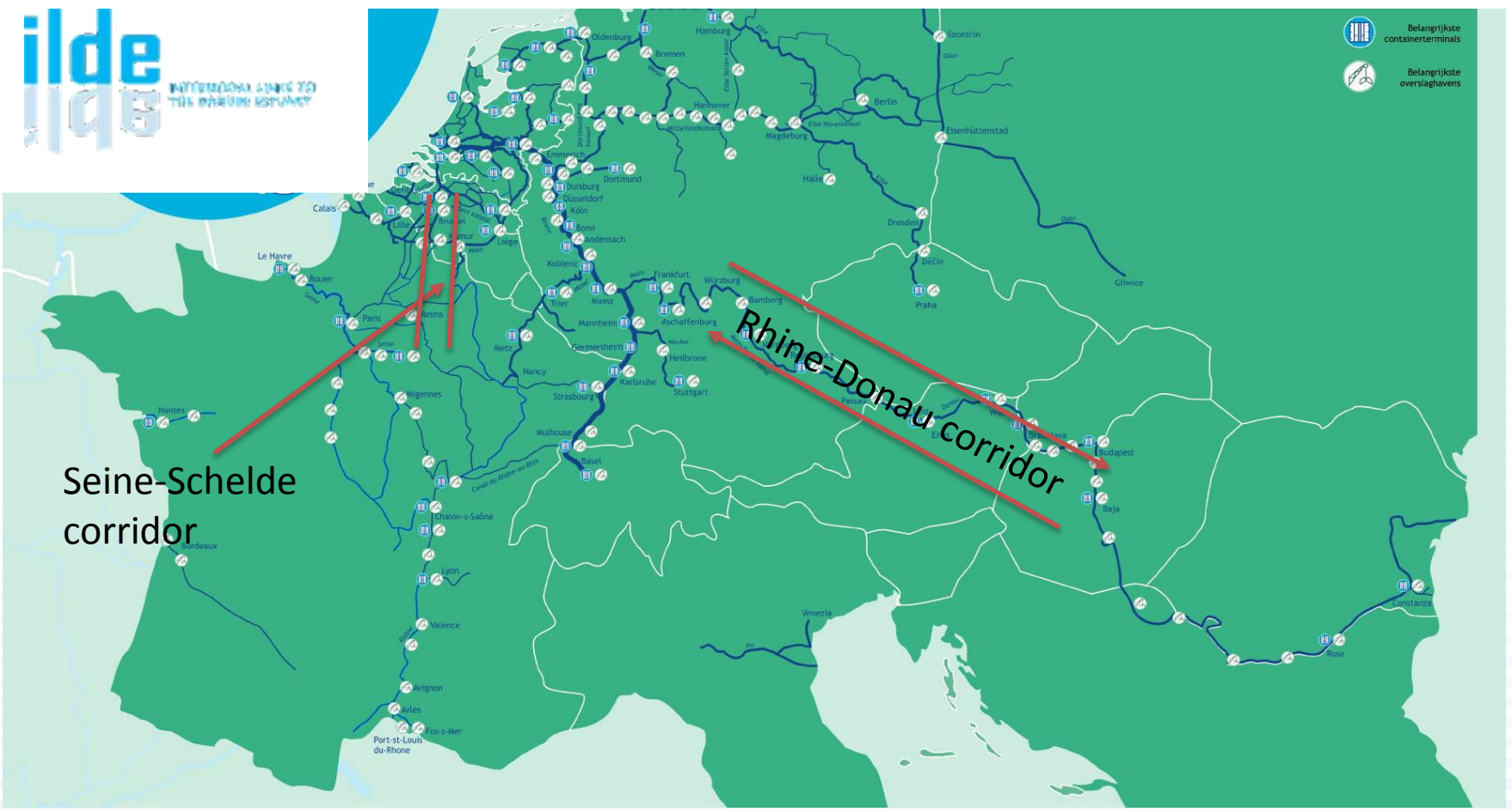




Waterwegen en Zeekanaal NV  
weg van water

# Waterwegen en Zeekanaal NV

## Intermodal Links to the Danube Estuary (ILDE)







Waterwegen en Zeekanaal NV  
weg van water

# Waterwegen en Zeekanaal NV

## Intermodal Links to the Danube Estuary

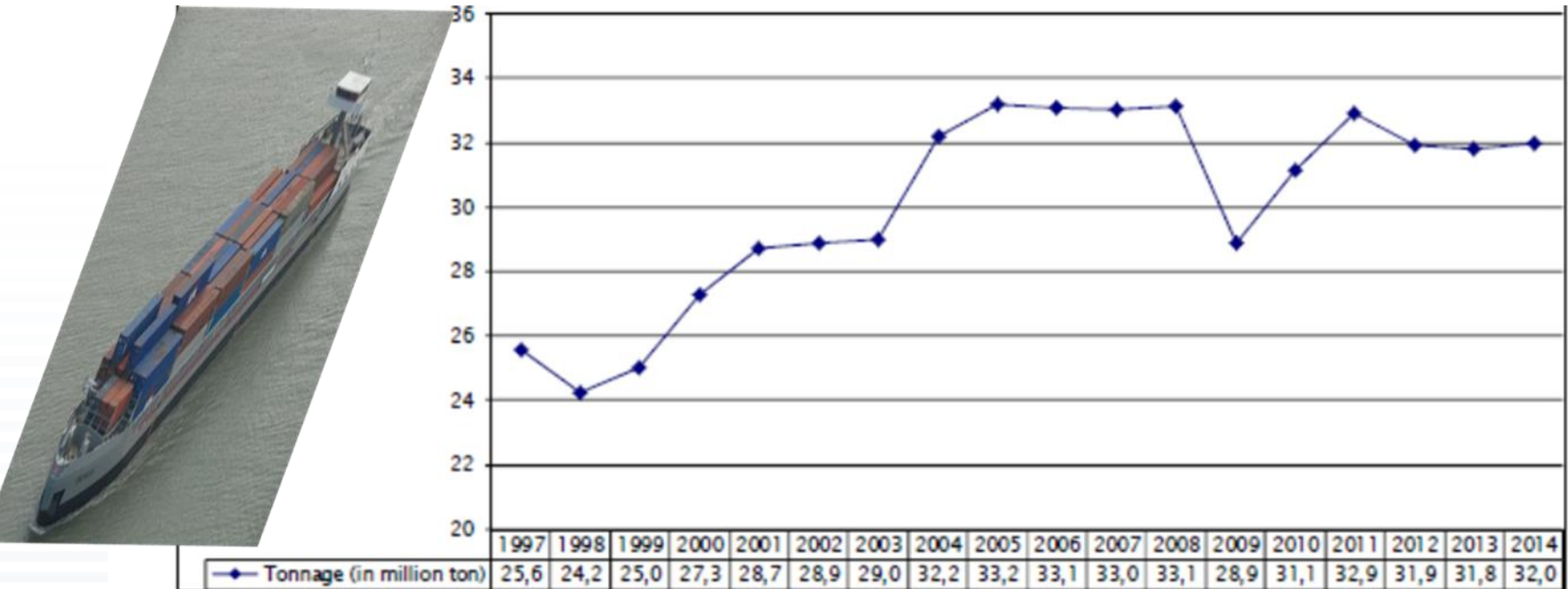
(ILDE)





# Waterwegen en Zeekanaal NV Intermodal Links to the Danube Estuary (ILDE)

Total Amount of cargo transport (tonnage) in Flanders on the inland waterways in management of Waterwegen en Zeekanaal, 1997-2014



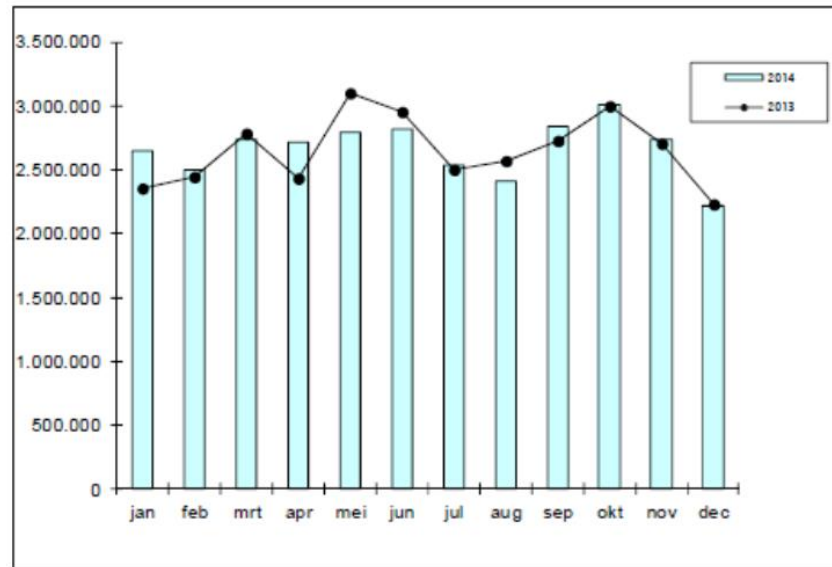


# Waterwegen en Zeekanaal NV

## Intermodal Links to the Danube Estuary



	2012	2013	2014	eff. groei	% groei
jan	2.571.176	2.349.397	2.648.814	+299.417	+12,74%
feb	2.397.092	2.448.437	2.498.555	+50.118	+2,05%
mrt	3.002.779	2.784.388	2.738.224	-46.164	-1,66%
apr	2.694.051	2.435.824	2.712.698	+276.874	+11,37%
mei	2.872.859	3.094.883	2.799.839	-295.044	-9,53%
jun	2.985.039	2.953.862	2.814.826	-139.036	-4,71%
jul	2.411.399	2.505.362	2.537.862	+32.500	+1,30%
aug	2.540.857	2.567.133	2.412.196	-154.937	-6,04%
sep	2.790.095	2.729.027	2.840.691	+111.664	+4,09%
okt	2.812.452	2.995.577	3.011.489	+15.912	+0,53%
nov	2.665.855	2.703.958	2.738.624	+34.666	+1,28%
dec	2.156.908	2.226.348	2.217.799	-8.549	-0,38%
<b>TOTAAL</b>	<b>31.900.562</b>	<b>31.794.196</b>	<b>31.971.617</b>	<b>+177.421</b>	<b>+0,56%</b>







Waterwegen en Zeekanaal NV  
weg van water

# Waterwegen en Zeekanaal NV Intermodal Links to the Danube Estuary (ILDE)



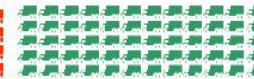
Possible solution  
MODAL SHIFT → INLAND NAVIGATION



1 SHIP  
1200 TON



40  
WAGONS



60  
TRUCKS



Waterwegen en Zeekanaal NV  
weg van water

# Waterwegen en Zeekanaal NV

## Intermodal Links to the Danube Estuary (ILDE)



New relationships? ...





### Trade between Belgium and Hungary

	2013		2013	
	Export (tonnes)	Import (tonnes)	Export (%)	Import (%)
Agricultural	45,687	46,265	11%	17%
Food	32,264	56,717	8%	21%
Textile	7,027	4,531	2%	2%
Wood, paper, printing industry	6,801	19,115	2%	7%
Chemicals	221,477	54,710	56%	20%
Building and building materials	8,040	6,886	2%	3%
Steel, iron, non-ferro and processed	42,534	35,608	11%	13%
Machinery, automotive; Industrial electronics	11,674	24,342	3%	9%
Consumer electronics	7,153	10,629	2%	4%
Other	3,199	645	1%	0%
Public utilities and waste	12,256	12,882	3%	5%
Total	398,112	272,330	100%	100%

Source: Comtrade; Processed by BCI



Mid-term potential for inland shipping	Belgium-Hungary		The Netherlands-Hungary		Belgium and the Netherlands - Hungary	
	Exports (tonne)	Imports (tonne)	Exports (tonne)	Imports (tonne)	Exports (tonne)	Imports (tonne)
01 - Live animals	2	1	7,871	232	7,873	234
02 - Meat and edible meat offal	574	222	10,039	661	10,613	883
07 - Edible vegetables and certain roots and tubers	447	448	8,016	86	8,463	534
08 - Edible fruit and nuts; peel of citrus fruits or melons	2,539	69	2,978	24	5,517	93
12 - Oil seeds and oleaginous fruits; miscellaneous grains, seeds and fruit; industrial or medical plants; straw and fodder	151	1,889	5,784	7,207	5,935	9,096
10 - Cereals	147	821	116	16,618	264	17,439
15 - Animal or vegetable fats and oils and their cleavage products; prepared edible fats; animal or vegetable waxes	751	967	6,335	9,150	7,085	10,117
22 - Beverages, spirits and vinegar	0	0	2,898	3,048	2,898	3,048
72 - Iron and steel	1,913	1,255	12,862	811	14,775	2,066
73 - Articles of iron or steel	525	360	2,469	451	2,993	811
76 - Aluminium and articles thereof	987	260	16,620	266	17,606	525
83 - Miscellaneous articles of base metal	20	142	7,823	13	7,843	156
27 - Mineral fuels, mineral oils and products of their distillation; bituminous substances; mineral waxes	1,261	93	1,157	633	2,418	727
29 - Organic chemicals	2,854	619	7,968	465	10,823	1,085
31 - Fertilizers	3,203	7	11,353	0	14,555	7
39 - Plastics and plastic products	7,478	1,337	20,440	504	27,918	1,842
84 - Nuclear reactors, boilers, machinery and mechanical appliances; parts thereof	761	575	7,905	10,522	8,665	11,097
87 - Vehicles other than railway or tramway rolling-stock, and parts and accessories thereof	218	799	14,642	687	14,860	1,486
23 - Residues and waste from the food industries; prepared animal fodder	1,048	726	29,384	4,556	30,432	5,283
<b>Total</b>	<b>24,877</b>	<b>10,593</b>	<b>176,661</b>	<b>55,935</b>	<b>201,538</b>	<b>66,528</b>



- ILDE (Intermodal Links to the Danube Estuary)
  - partnership Hungary-Romania- Flanders
  - market potential → start an inland shipping test →
  - aim short term : 180.000 T or 9.000 truckloads  
mid to long term: 280.000 T or 14.000 truckloads

Flanders: GDP = 216.286 mio euro  
population = 6,4 million

Hungary: GDP = 100,5 billion euro  
population = 9,9 million

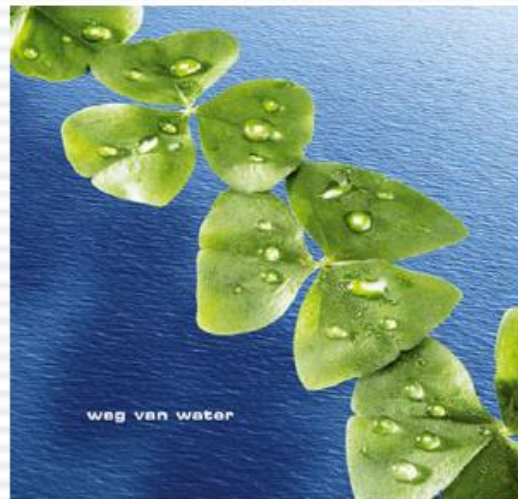




Waterwegen en Zeekanaal NV  
weg van water

# Waterwegen en Zeekanaal NV

## Intermodal Links to the Danube Estuary (ILDE)



Waterwegen en Zeekanaal NV  
weg van water

Thank you for your attention!  
Any Questions?