

DANTE

Improving Administrative Procedures and Processes for Danube IWT



Danube Transnational Programme

DANTE

Welcome to the 1st
Transnational Working Group
Meeting



Project co-funded by European Union Funds (ERDF, IPA)

Agenda



12:30 – 13:30	Business and networking lunch Participants of the Joint EUSDR PA1a and PA11 Working Group and DANTE
13:30 – 13:45	Welcome & introduction Danube Commission (Petar Margić) & PDI
13:45 – 14:15	State of play of the DANTE project and barrier reporting tool PDI (Robert Rafael) <ul style="list-style-type: none">• Questions & discussion
14:15 – 14:45	Analysis of existing procedures and administrative processes Steinbeis Innovation GmbH, Steinbeis-Europe-Center (Julia Sliwinski) <ul style="list-style-type: none">• Questions & discussion
14:45 – 15:15	Presentation of the outcomes of the first National Working Table meetings ARVD (Anna Pavlíková, Monika Kučerová) <ul style="list-style-type: none">• Questions & discussion
15:15 – 15:30	Conclusion PDI & Danube Commission (Horst Schindler)

DANTE

Improving Administrative Procedures and Processes for Danube IWT



Danube Transnational Programme

DANTE

State of play of the DANTE project and barrier reporting tool

24 October 2017

1st Transnational Working Group Meeting

Danube Commission, Budapest



Project co-funded by European Union Funds (ERDF, IPA)

Danube Waterway: High Potential – Numerous Challenges



Potentials

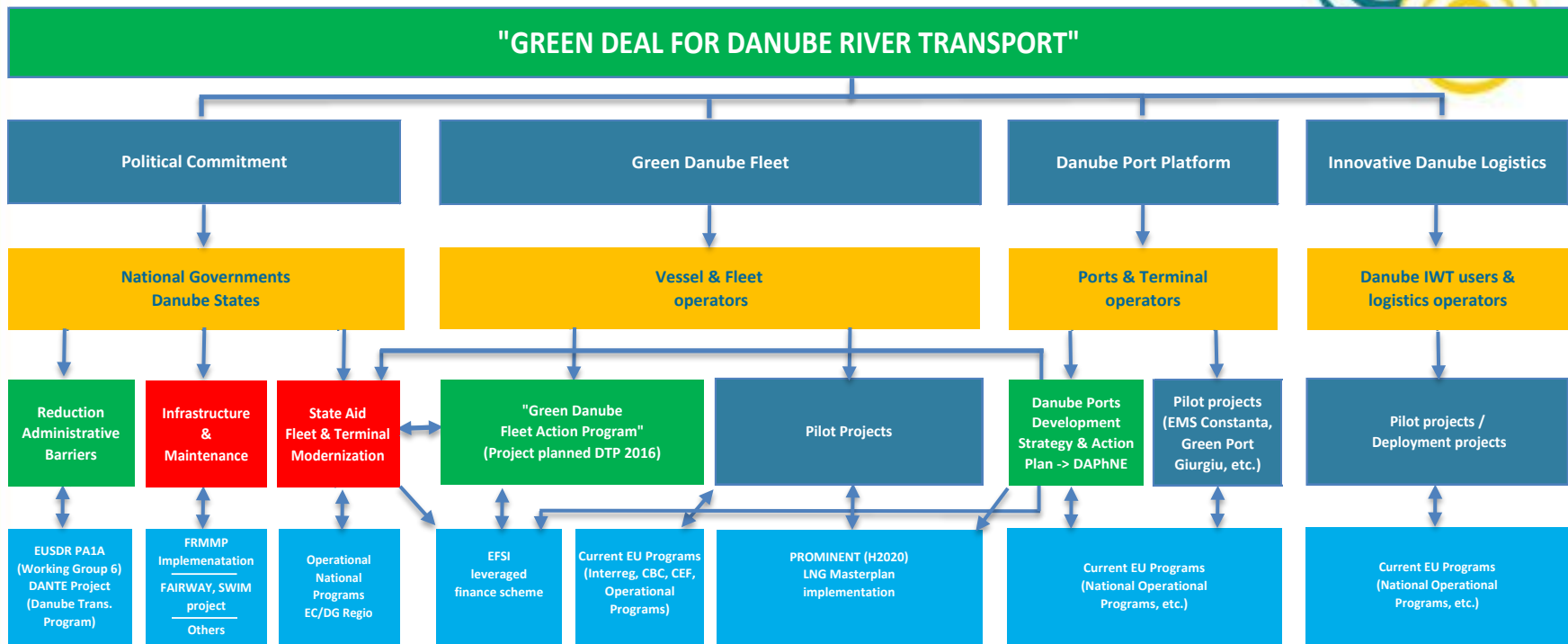
- Danube serves an economic area of circa 90 mio. inhabitants
- Connects CE & SEE with growing markets in Black Sea Region
- Environmentally friendly transport corridor
- Can provide cost-effective logistics for land-locked industries ensuring competitiveness and jobs

Challenges

- Ensure standards for waterway maintenance
- Elimination of infrastructure bottlenecks
- Promotion of investment in Danube Ports and unlocking their economic potential
- Modernize Danube fleet
- ***Reduce logistics costs by elimination of administrative barriers***



The Green Deal Structure



EUSDR PA1A & Danube Corridor Plan & Danube Innovation Centre (INDanube / EIBIP)

Legend: ■ Pre-condition for innovation
■ Project platform in preparation by Pro Danube



Benefits & Implementation of Green Deal

- Green Deal provides platform for targeted long-term cooperation of Danube States – Private Sector – European Commission
- Supports key policy objectives in transport & environment / regional development / special focus on the greening of the waterborne transport system
- Ensures high leverage of public spending due to wide-scale engagement of private sector
- Embedded into EUSDR PA1A and related to Danube Corridor Plan
- Steered with help of Danube Transnational Program (DTP) projects – DANTE & DAPhNE started / one planned for spring 2018
- Builds on successful pilot projects which testify viability of concept & produce concrete results to be up-scaled
- Green Deal will create many more valuable projects with tangible results contributing to economic growth, creating jobs and improve environmental performance of transport system of the region



Green Deal official launching event

Danube Transport Day European Parliament

7 September 2016, 16:00-18:00



Policy makers



Com. Corina Crețu



Herald Ruijters/ DG MOVE



Ionuț Mosteanu / RO MT

MEPs



Georgi Pirinski / BG



Gessine Meissner / DE



Ismail Ertug / DE

Key industry representatives from the Danube Region



W. Lüttner / Lüttner Cruises



M. Viefers / Rhenus Logistics



A. Stoian / TTS SA



Project co-funded by European Union Funds (ERDF, IPA)



How to deal with administrative barriers?

- Identify administrative barriers for IWT on Danube and tributaries and responsible authorities
- Set up an efficient and permanent monitoring system for collecting users experiences (supported by online tools)
- Set up and operate a working platform with responsible authorities in order to adapt administrative procedures and processes with the objectives to reduce administrative efforts and costs for waterway users
- Identify good practices and guidelines for effective administration of IWT activities
- Promote stronger harmonized procedures and processes of authorities effecting IWT transport on Danube and navigable tributaries



Focus on the objectives of the Danube Region Strategy



Objectives of the project

- Improve administrative procedures and reduce bureaucratic processes as well as related charges and fees for IWT on Danube and navigable tributaries
- Cooperate with public authorities to develop and implement simplified administrative procedures and processes
- Reduce time losses and costs caused by unnecessary administrative regulations and processes for Danube businesses
- Eliminate/Reduce red tape and abuse of administrative power
- Strengthen the competitive position of companies, support economic growth and the creation of jobs in the region by increased efficient public administration
- Introduce stakeholder consultation procedures and processes in legal and regulatory acts of public administration relevant for IWT
- Harmonize regulations and administrative processes for transport and transshipment operations (“Same River-Same Rules” concept)



Thematic areas (1/2)

Procedures and processes of the following national authorities will be analyzed and monitored:

- Border Police and Tax & Customs authorities *)
- Navigation authorities (traffic control authorities)
- Port authorities (Harbor master) /administrations
- Waterway and Canal administrations
- Other authorities (such as Health Control, Disaster Management, Law Enforcement/Water Police, etc.) which impose administrative barriers to the movement of inland vessels and the transportation and transshipment of goods on the river and in the ports

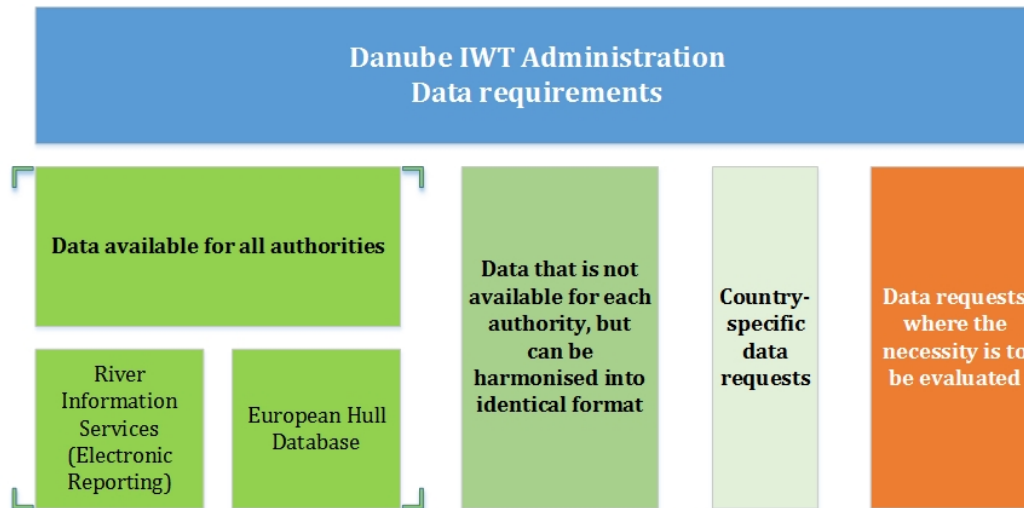
*) the PA1A/EUSDR technical secretariat via donau has recently carried out an investigation on border and customs procedures and processes and has developed a model process for border crossings. The work in this area will be updated and used as basis for the structured dialogue in the relevant working table of the PA1A/EUSDR working group on administrative processes



Thematic areas (2/2)

GOOD PRACTICES		TRANSNATIONAL MEETINGS
	Germany Austria Slovakia Hungary Croatia Serbia Romania Bulgaria	
Border Police and Tax & Customs authorities	Proposed Action holder: Danube Commission	
	(External) peer expert for each country to be selected during the roll-out	
Navigation authorities (traffic control authorities)	Proposed Action holder: Austria – PDI	
	(External) peer expert for each country to be selected during the roll-out	
Port authorities (Harbor master) /administrations	Proposed Action holder: Hungary – HUNPASS	
	(External) peer expert for each country to be selected during the roll-out	
Waterway and Canal administrations	Proposed Action holder: Romania – PDR	
	(External) peer expert for each country to be selected during the roll-out	
Other authorities	Proposed Action holder: Bulgaria – BRCCI	
	(External) peer expert for each country to be selected during the roll-out	
NATIONAL WORKING TABLES		
REQUIRED CHANGES		

Data requirements in IWT administration



DANTE - Improving Administrative Procedures and Processes for Danube IWT. Activity 4.1 / Deliverable D 4.1.1. Template for national inputs to the analysis of existing procedures and administrative processes

Organisation	Location		Concerned authorities	Type of procedure	Existing procedures/ administrative processes - <i>Please fill in one per row</i>								Comments
	Country	City/River kilometer			1. Type of documents		2. Fees		3. Time consumption		4. Other		
					Number of documents	Languages available	Type of vessel	Ship size	Time for	Time needed	(i.e. length/height/width conditions, regulations, name, insurance...)		
<i>please enter</i>	<i>please select</i>	<i>please enter</i>	<i>please select</i>	<i>please enter</i>	<i>please select</i>	<i>please enter</i>	<i>please select</i>	<i>please enter</i>	<i>please select</i>	<i>please select/hours:minutes</i>	<i>please enter</i>	<i>please enter</i>	





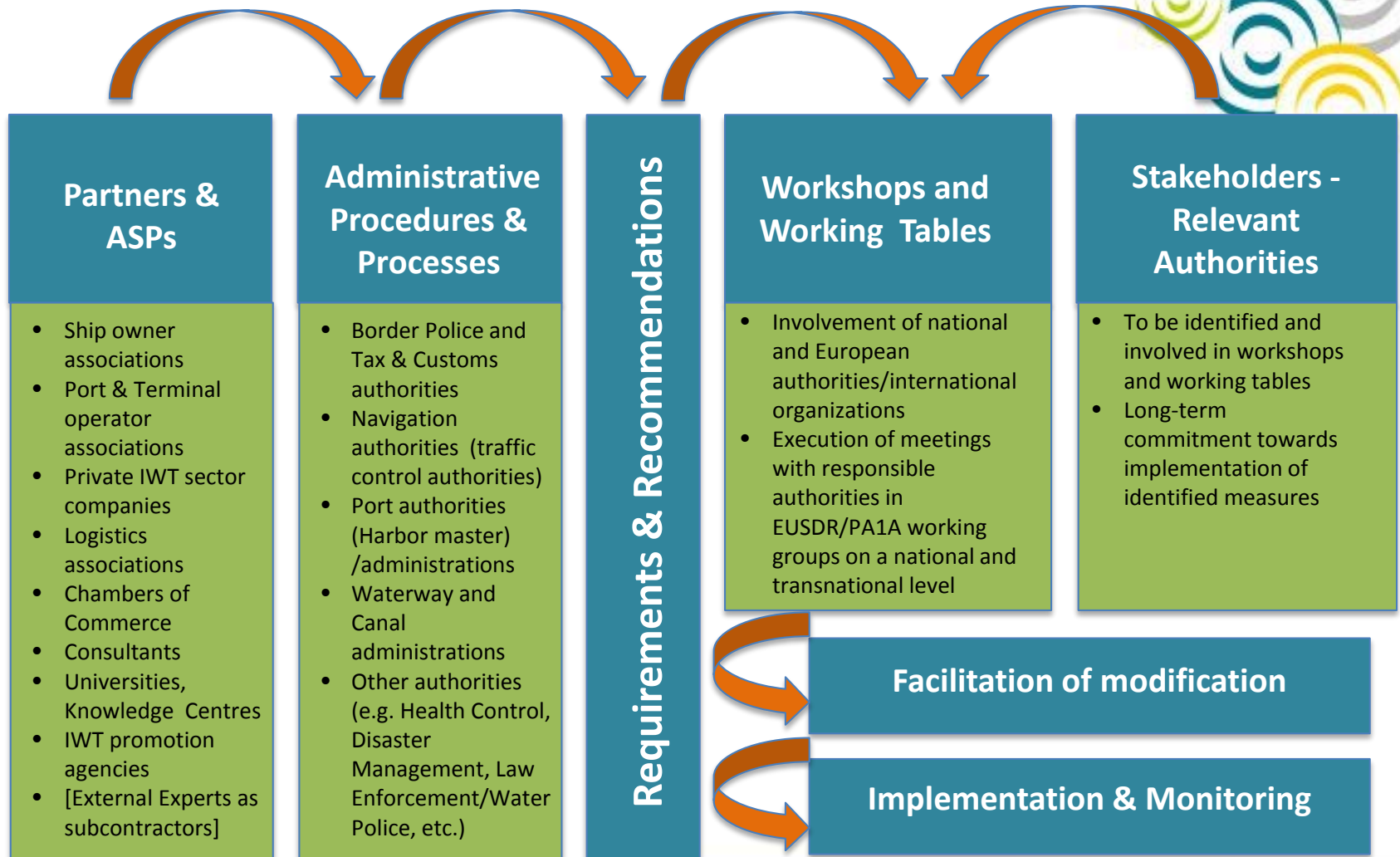
Work approach (1/2)



DANTE - IMPROVING ADMINISTRATIVE PROCEDURES AND PROCESSES FOR DANUBE IWT



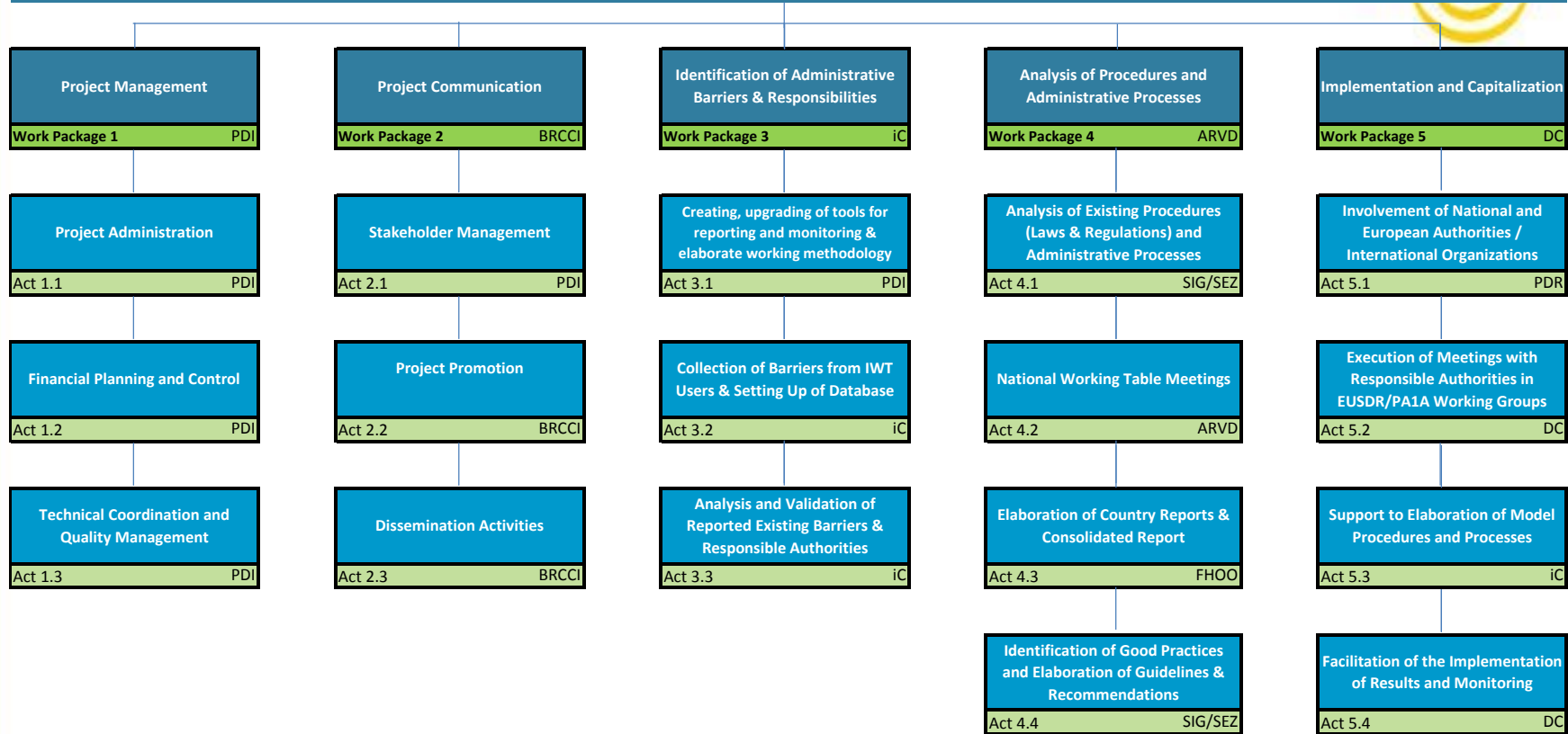
Work approach (2/2)





Work breakdown structure - overview

Improving Administrative Procedures and Processes for Danube IWT (DANTE)





Timeline of project activities

DANTE GANTT																																
Year		2017												2018												2019						
Calendar month		Jan	Feb	Mar	Apr	May	Jun	Jul	Aug	Sep	Oct	Nov	Dec	Jan	Feb	Mar	Apr	May	Jun	Jul	Aug	Sep	Oct	Nov	Dec	Jan	Feb	Mar	Apr	May	Jun	
WP	Project month	1	2	3	4	5	6	7	8	9	10	11	12	13	14	15	16	17	18	19	20	21	22	23	24	25	26	27	28	29	30	
WP1	Project management																															
1.1	Project administration	1	2	3	4	5	6	7	8	9	10	11	12	13	14	15	16	17	18	19	20	21	22	23	24	25	26	27	28	29	30	
1.2	Financial planning and control	1	2	3	4	5	6	7	8	9	10	11	12	13	14	15	16	17	18	19	20	21	22	23	24	25	26	27	28	29	30	
1.3	Technical coordination and quality management	1	2	3	4	5	6	7	8	9	10	11	12	13	14	15	16	17	18	19	20	21	22	23	24	25	26	27	28	29	30	
WP2	Project communication																															
2.1	Stakeholder management	1	2	3	4	5	6	7	8	9	10	11	12	13	14	15	16	17	18	19	20	21	22	23	24	25	26	27	28	29	30	
2.2	Project promotion	1	2	3	4	5	6	7	8	9	10	11	12	13	14	15	16	17	18	19	20	21	22	23	24	25	26	27	28	29	30	
2.3	Dissemination activities	1	2	3	4	5	6	7	8	9	10	11	12	13	14	15	16	17	18	19	20	21	22	23	24	25	26	27	28	29	30	
WP3	Identification of administrative barriers & responsibilities																															
3.1	Creating, upgrading of tools for reporting and monitoring & elaborate working methodology	1	2	3	4	5	6							13	14								21	22								
3.2	Collection of barriers from IWT users & setting up of database			3	4	5	6	7	8	9	10	11	12	13	14	15	16	17	18	19	20	21	22	23	24	25	26					
3.3	Analysis and validation of reported existing barriers & responsible authorities							7	8	9						15	16	17						23	24	25	26					
WP4	Analysis of procedures and administrative processes																															
4.1	Analysis of existing procedures (laws & regulations) and administrative processes	1	2	3	4	5	6																									
4.2	National Working Table Meetings		2	3	4	5	6	7						12	13	14	15															
4.3	Elaboration of country reports & Consolidated report							7	8	9	10	11	12	13	14	15	16	17														
4.4	Identification of good practices and Elaboration of guidelines & recommendations													13	14	15	16	17	18	19	20	21	22	23	24							
WP5	Implementation and capitalization																															
5.1	Involvement of national and European authorities/international organizations			3	4	5	6	7	8	9	10	11	12	13	14	15	16	17	18	19	20	21	22	23	24							
5.2	Execution of meetings with responsible authorities in EUSDR/PA1A working groups			3	4	5			9	10	11					16	17	18			21	22						28	29			
5.3	Support to elaboration of model procedures and processes													13	14	15	16	17	18	19	20											
5.4	Facilitation of the implementation of results and monitoring																						21	22	23	24	25	26	27	28	29	30

National Awareness Workshops serving to call in the relevant authorities / organizations and to discuss the local problems, shortcomings and requirements that can be improved and harmonized, resulting in the *Draft Requirement & Improvement Documents*

Transnational workshops by 4 thematic themes to start the clearing and harmonization activities of the requirements

National Awareness Workshops / Follow-up of the previous meetings and works resulting in *National Arrangement Documents*

Overall Transnational Workshop to coordinate and align final results and outcomes

Project properties



ERDF Partners:

- Pro Danube International
- Danube Commission
- Steinbeis Innovation gGmbH, Steinbeis-Europe-Center / DE
- iC consulenten ZT GesmbH / AT
- University of Applied Sciences Upper Austria (FHOO)
- Waterborne Transport Development Agency (ARVD) / SK
- Slovak Shipping and Ports JSC / SK
- Hungarian Federation of Passenger Fleet Operators
- Hungarian Federation of Inland Waterway Freight Forwarders (MBFSZ)
- Romanian Ministry of Transport
- Romanian River Ship Owners and Port Operators Association (AAOPFR)
- Pro Danube Romania
- Constanta Port Business Association
- Port Authority Vukovar
- Bulgarian-Romanian Chamber of Commerce and Industry

IPA Partner:

- Shipmasters Association of Serbia

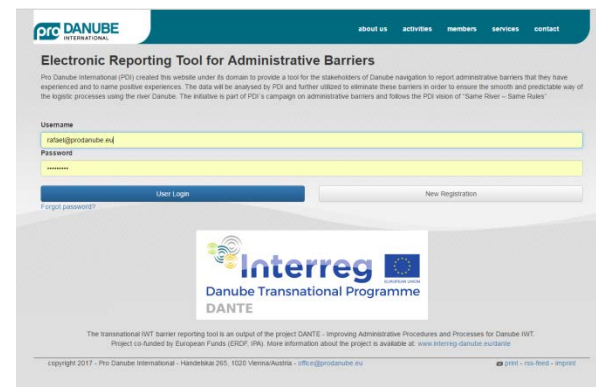
Associated Strategic Partners:

- International Sava River Basin Commission
- Rhenus Logistics Austria GmbH
- Hungarian Federation of Danube Ports
- BRODOKOMERC NS d.o.o. / RS
- Port BULMARKET EAD / BG
- Union of Romanian Inland Ports
- Danube Cruises Romania srl
- Danube Logistics SRL / MD
- Ministry of Maritime Affairs, Transport and Infrastructure
- Ministry of National Development / HU
- State Enterprise Ukrainian Sea Ports Authority
- Ministry of Transport, Construction and Regional Development of the Slovak Republic
- **Duration of the project:** January 2017 - June 2019
- **Total budget:** 1,982,786 EUR
- **ERDF Contribution:** 1,650,134.75 EUR
- **IPA Contribution:** 35,233.35 EUR



Administrative barriers – Electronic Reporting Tool

- Objectives in line with the vision of “Same River – Same Rules”
 - To provide a tool for the stakeholders of Danube navigation:
 - » to report administrative barriers that they have experienced
 - » to name positive experiences
 - Sound database is pre-condition for putting lights on barriers
 - Will be the basis for interventions / further actions



www.prodanube.eu/administrativebarriers

Administrative barriers – Electronic Reporting Tool

- Available in 8 languages
 - English
 - German
 - Slovak
 - Hungarian
 - Serbian
 - Croatian
 - Romanian
 - Bulgarian

The screenshot shows the registration page for the 'Transnational IWT barrier reporting tool'. The page is titled 'Electronic Reporting Tool for Administrative Barriers' and is in English. It features a registration form with the following fields: Username, E-Mail, Password, Repeat password, Name, and Function of reporting person / organisation. Below the form is a 'Terms and Conditions' section with several paragraphs of text and two checkboxes for agreement. A 'submit' button is located at the bottom of the form. The footer of the page includes the Interreg Danube Transnational Programme DANTE logo and contact information.

proDANUBE INTERNATIONAL

about us activities members services contact

Transnational IWT barrier reporting tool
Electronic Reporting Tool for Administrative Barriers

Register

Username*
Username*

E-Mail*
E-Mail

Type in your password*
Password

Repeat password*
Password

Name:
Name

Function of reporting person / organisation*
Please choose an item below

Phone number:
+43 1 555

*Fields are mandatory

Terms and Conditions

The copyright of the content of this website is owned by Pro Danube International ("PDI"), except if another source is referred to in a specific document or if additional copyright information is disclosed. In the latter case the disclosed copyright information shall apply.

S1: Republishing
Quoting from external sites to the IWT website is welcome by the website. Permission is not required in such cases. It is sufficient to inform the website. (The actual name objectives agreed being to our website from an image environment and shall relate to trademarks)

S2: Use of Content
The original content of the website and any page component (text, image, sound, video, animation, etc.) may only be used with prior written approval. No permission is required for quoting. Quoting, however, must be in line with the provisions of the corresponding rules. In case of quoting please point to the referred page of the portal with a hyperlink, with reference to the source. Permission is required for the secondary publication of articles (in case of verbatim copies). Publication of articles from the IWT website which are based on news agency related sources is forbidden.

S3: Use of Images
Images of the IWT website are subject to copyright. They shall only be used with permission. It is forbidden to save the images of the IWT portal and use them for commercial purposes without prior permission.

S4: Miscellaneous
By providing your personal / company data and email address you explicitly agree to allow PDI to use these for registration, statistic and information provision purposes. PDI will not hand over the data to any other third parties. It is forbidden to save the contents of the IWT website to a public or private database. It is forbidden to use the contents of the IWT website for commercial purposes or to distribute it. The contents and the structure of the website shall not be changed or used for purposes other than the aim of the website even if permission for publication is obtained. The editors of the website do their best to ensure that the published information are accurate, up-to-date and complete, but shall not be liable for any damage arising from the use of these information. If you have questions or you would like to request permission for publications, please contact us on the availability listed in the "Contact" menu.

I read and agree to the terms and conditions above.

I agree that the email address will be used for PDI reports, but will not be provided to any other third party.

submit

Interreg
Danube Transnational Programme
DANTE

The transnational IWT barrier reporting tool is an output of the project DANTE - Improving Administrative Procedures and Processes for Danube IWT.
Project co-funded by European Funds (ERDF, IPA). More information about the project is available at: www.interreg-danube.eu/dante

copyright 2017 • Pro Danube International • Handelskai 265, 1030 Vienna, Austria • office@prodanube.eu

Administrative barriers – Electronic Reporting Tool



- Available to collect inputs in the field of the 5 thematic areas from experts on the field
- Easy-to-use
- Available from fix and mobile equipment

Transnational IWT barrier reporting tool
Electronic Reporting Tool for Administrative Barriers

Pro Danube International (PDI) created this website under its domain to provide a tool for the stakeholders of Danube navigation to report administrative barriers that they have experienced and to name positive experiences.

The transnational IWT barrier and good practice reporting tool is the first output of the DANTE project that is setting the background to collect inputs from the IWT stakeholders. This innovative, multi-language tool enables the state-of-the-art way of mapping the every-day barriers of the actors in IWT and result in a database that will work as basis for the analysis and recommendations.

The inputs will be analysed by PDI and the partners in the DANTE project, and further utilized to eliminate these barriers in order to ensure the smooth and predictable way of the logistic processes using the river Danube. The initiative is part of PDI's campaign on administrative barriers and follows the PDI vision of "Same River – Same Rules".

101 issues reported by 11-07-2017 in the below split between thematic areas:
46 Waterway and Canal administrations
24 Port authorities / administrations
16 Navigation / traffic control authorities
11 Unknown authority / several authorities involved
4 Border police, Tax & Customs

Username: rafael
Password: [redacted]

User Login | New Registration

Forgot password?

Interreg
Danube Transnational Programme
DANTE

The transnational IWT barrier reporting tool is an output of the project DANTE - Improving Administrative Procedures and Processes for Danube IWT. Project co-funded by European Funds (ERDF, IPA). More information about the project is available at: www.interreg-danube.eu/dante

copyright 2017 - Pro Danube International - Handelskai 265, 1020 Vienna/Austria - office@prodanube.eu | print - rss-feed - imprint

Results achieved by September 2017



- First round of [national working table meetings](#) rolled out
- DANTE is selected as [EUSDR Strategic Project](#)
- Continuous co-operation is ensured with:
 - DG MOVE
 - EUSDR PA1a & PA11
 - The IWT sector
- The [Transnational IWT barrier reporting tool](#) was launched on 21 September 2017
- Series of the transnational workshops is started right now



Building on existing projects & initiatives such as....

- Study on administrative and regulatory barriers in the field of inland waterway transport (NEA 2008)
- PLATINA Sub-work package 1.2 - Monitoring administrative barriers
- DARIF in the frame of EUDRS Priority Area 11- Security
- World Bank Initiative on reducing administrative barriers in Danube transport
- Work of technical secretariat EUSDR PA1A on Border Control Model Processes
- EC objective and initiatives addressing better governance and increase of administrative capacity
- PDI Concept "Same River – Same Rules"
- PDI Policy initiative "Green Deal for Danube River Transport"



Summary & Outlook

- 30-months project to come up with simplified – harmonised – digitalised procedures and processes for Danube IWT administration
- Danube IWT Administration Strategy with the related action plan
- DANTE Platform – Project+ to monitor and facilitate the implementation



INDanube – More information



<https://indanube.eu/>



<https://www.facebook.com/INDanube/>



<https://www.linkedin.com/groups/8560850>



<https://twitter.com/INDanube>





Thank you for your attention!



Alexandru Capatu
Manfred Seitz
Robert Rafael

Pro Danube International

capatu@prodanube.eu
seitz@prodanube.eu
rafael@prodanube.eu