

DANTE

Improving Administrative Procedures and Processes for Danube IWT



PROJECT INTRODUCTION

*8th June 2017, Budapest
Danube Commission Workshop*



Project co-funded by European Union Funds (ERDF, IPA)



Danube Waterway: High Potential – Numerous Challenges

Potentials

- Danube serves an economic area of circa 90 mio. inhabitants
- Connects CE & SEE with growing markets in Black Sea Region
- Environmentally friendly transport corridor
- Can provide cost-effective logistics for land-locked industries ensuring competitiveness and jobs

Challenges

- Ensure standards for waterway maintenance
- Elimination of infrastructure bottlenecks
- Promotion of investment in Danube Ports and unlocking their economic potential
- Modernize Danube fleet
- ***Reduce logistics costs by elimination of administrative barriers***



How to deal with administrative barriers?

- Identify administrative barriers for IWT on Danube and tributaries and responsible authorities
- Set up an efficient and permanent monitoring system for collecting users experiences (supported by online tools)
- Set up and operate a working platform with responsible authorities in order to adapt administrative procedures and processes with the objectives to reduce administrative efforts and costs for waterway users
- Identify good practices and guidelines for effective administration of IWT activities
- Promote stronger harmonized procedures and processes of authorities effecting IWT transport on Danube and navigable tributaries

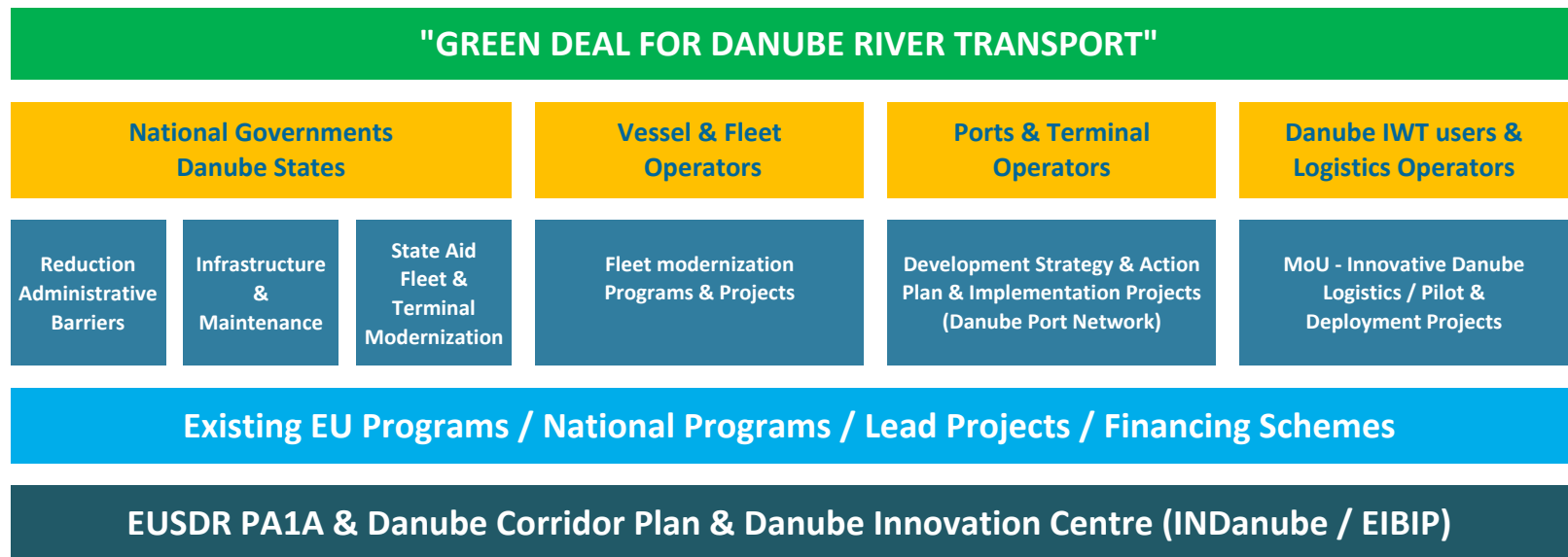


→ Set-up of the DANTE project in the DTP's 1st Call in line with the objectives of the EU Strategy for the Danube Region

Green Deal for Danube River Transport – Rationale & Concept



1. Eco-efficient & reliable transport system needed for sustainable growth in region
2. Danube logistics can provide cost-effective logistics solutions to many industries supporting competitiveness, growth & jobs
3. High economic potentials of Danube withhold by infrastructure shortcomings, unfavourable regulatory framework & structural problems
4. Long-term cooperation of public & private sector can break vicious cycle of infrastructure degradation & reduction of transport demand
5. Restoration of trust into Danube through commitment of stakeholders





Green Deal official launching event

Danube Transport Day European Parliament

7 September 2016, 16:00-18:00



Policy makers



Com. Corina Crețu



Herald Ruijters/ DG MOVE



Ionut Mosteanu / RO MT

MEPs



Georgi Pirinski / BG



Gessine Meissner / DE



Ismail Ertug / DE

Key industry representatives from the Danube Region



W. Lüftner / Lüftner Cruises



M. Viefers / Rhenus Logistics



A. Stoean / TTS SA



Project co-funded by European Union Funds (ERDF, IPA)



Objectives of the DANTE project

- Improve administrative procedures and reduce bureaucratic processes as well as related charges and fees for IWT on Danube and navigable tributaries
- Cooperate with public authorities to develop and implement simplified administrative procedures and processes
- Reduce time losses and costs caused by unnecessary administrative regulations and processes for Danube businesses
- Eliminate/Reduce red tape and abuse of administrative power
- Strengthen the competitive position of companies, support economic growth and the creation of jobs in the region by increased efficient public administration
- Introduce stakeholder consultation procedures and processes in legal and regulatory acts of public administration relevant for IWT
- Harmonize regulations and administrative processes for transport and transshipment operations (“Same River-Same Rules” concept)



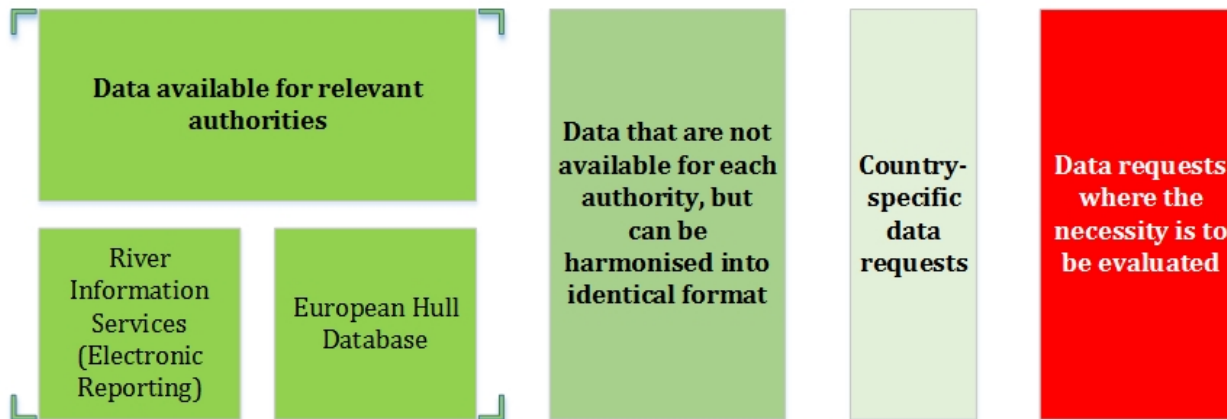
Thematic areas

GOOD PRACTICES		TRANSNATIONAL MEETINGS
	Germany Austria Slovakia Hungary Croatia Serbia Romania Bulgaria	
Border Police and Tax & Customs authorities	Proposed Action holder: Danube Commission	
	External peer expert for each country to be selected during the roll-out	
Navigation authorities (traffic control authorities)	Proposed Action holder: Austria – PDI	
	External peer expert for each country to be selected during the roll-out	
Port authorities (Harbor master) /administrations	Proposed Action holder: Hungary – MAHOSZ	
	External peer expert for each country to be selected during the roll-out	
Waterway and Canal administrations	Proposed Action holder: Romania – PDR	
	External peer expert for each country to be selected during the roll-out	
Other authorities	Proposed Action holder: Bulgaria – BRCCI	
	External peer expert for each country to be selected during the roll-out	
NATIONAL WORKING TABLES		
REQUIRED CHANGES		

Data requirements in IWT administration



Danube IWT Administration Data requirements



DANTE - Improving Administrative Procedures and Processes for Danube IWT. Activity 4.1 / Deliverable D 4.1.1. Template for national inputs to the analysis of existing procedures and administrative processes

Organisation	Location		Concerned authorities	Type of procedure	Existing procedures/ administrative processes - <i>Please fill in one per row</i>								Comments
	Country	City/River kilometer			1. Type of documents		2. Fees		3. Time consumption		4. Other		
					Number of documents	Languages available	Type of vessel	Ship size	Time for	Time needed	(e.g. loading/unloading conditions, regulations, norms, insurance...)		
<i>please enter</i>	<i>please select</i>	<i>please enter</i>	<i>please select</i>	<i>please enter</i>	<i>please select</i>	<i>please enter</i>	<i>please select</i>	<i>please enter</i>	<i>please select</i>	<i>please select</i>	<i>hours:minute</i>	<i>please enter</i>	<i>please enter</i>



Work approach



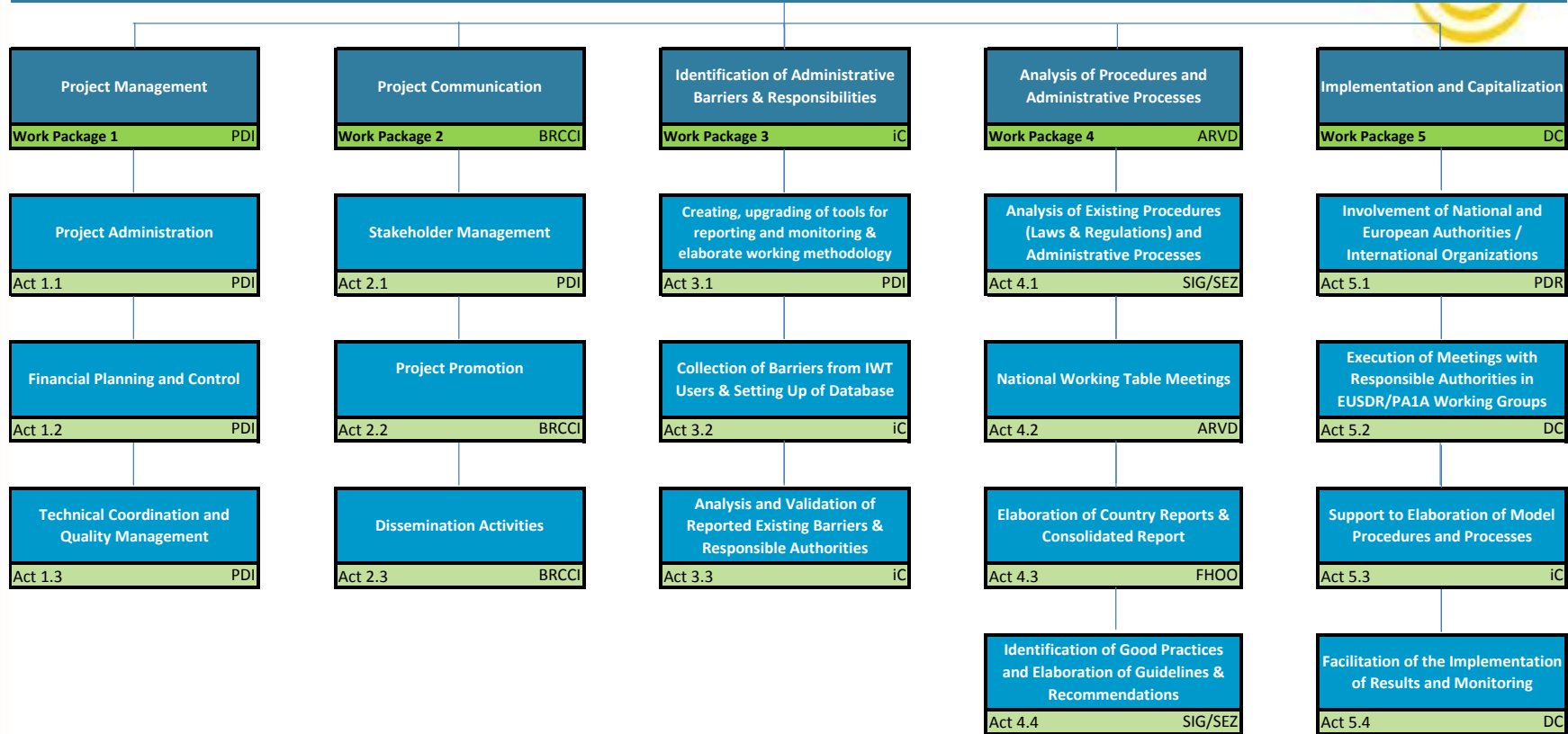
DANTE - IMPROVING ADMINISTRATIVE PROCEDURES AND PROCESSES FOR DANUBE IWT





Work breakdown structure - overview

Improving Administrative Procedures and Processes for Danube IWT (DANTE)



Project properties



ERDF Partners:

- Pro Danube International
- Danube Commission
- Steinbeis Innovation gGmbH, Steinbeis-Europe-Center / DE
- iC consulenten ZT GesmbH / AT
- University of Applied Sciences Upper Austria (FHOO)
- Waterborne Transport Development Agency (ARVD) / SK
- Slovak Shipping and Ports JSC / SK
- Hungarian Shipping Federation (MAHOSZ)
- Hungarian Federation of Inland Waterway Freight Forwarders (MBFSZ)
- Romanian Ministry of Transport
- Romanian River Ship Owners and Port Operators Association (AAOPFR)
- Pro Danube Romania
- Constanta Port Business Association
- Port Authority Vukovar
- Bulgarian-Romanian Chamber of Commerce and Industry

IPA Partner:

- Shipmasters Association of Serbia

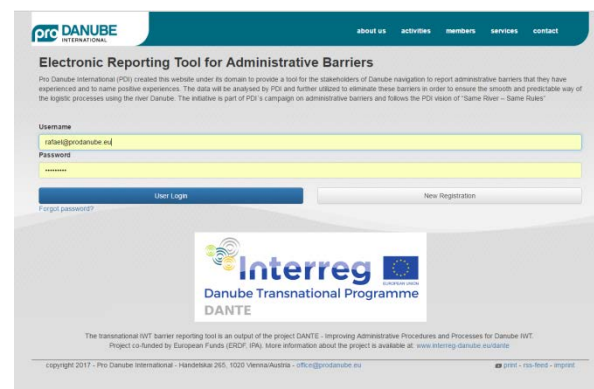
Associated Strategic Partners:

- International Sava River Basin Commission
- Rhenus Logistics Austria GmbH
- Hungarian Federation of Danube Ports
- BRODOKOMERC NS d.o.o. / RS
- Port BULMARKET EAD / BG
- Union of Romanian Inland Ports
- Danube Cruises Romania srl
- Danube Logistics SRL / MD
- Ministry of Maritime Affairs, Transport and Infrastructure
- Ministry of National Development / HU
- State Enterprise Ukrainian Sea Ports Authority
- Ministry of Transport, Construction and Regional Development of the Slovak Republic
- **Duration of the project:** January 2017 - June 2019
- **Total budget:** 1,982,786 EUR
- **ERDF Contribution:** 1,650,134.75 EUR
- **IPA Contribution:** 35,233.35 EUR



Administrative barriers – Electronic Reporting Tool

- Objectives in line with the vision of “Same River – Same Rules”
 - To provide a tool for the stakeholders of Danube navigation:
 - » to report administrative barriers that they have experienced
 - » to name positive experiences
 - Sound database is pre-condition for putting lights on barriers
 - Will be the basis for interventions / further actions



www.prodanube.eu/administrativebarriers

Cooperation between PA1a and DANTE



- **EUSDR PA1a** provides an implementation platform for targeted measures to improve administrative processes along the Danube
 - definition of thematic priorities: currently border controls
 - work programmes & concrete measures to eliminate administrative barriers
 - working groups including public authorities, shipping sector and interest representations to monitor implementation
 - permanent consultation with the governmental stakeholders
- **DANTE** will feed PA1a with practical sector inputs by
 - identifying administrative barriers and proposing viable solutions for their elimination
 - organising and focusing the shipping sector's support for the implementation of measures
 - claiming and monitoring improvements of specific administrative processes towards public authorities including feedback on the existing procedures
 - defining the Danube IWT Administration Strategy





Thank you for your attention!



Alexandru Capatu
Manfred Seitz
Robert Rafael

Pro Danube International

capatu@prodanube.eu
seitz@prodanube.eu
rafael@prodanube.eu

<http://www.interreg-danube.eu/dante>