

Dredging Works

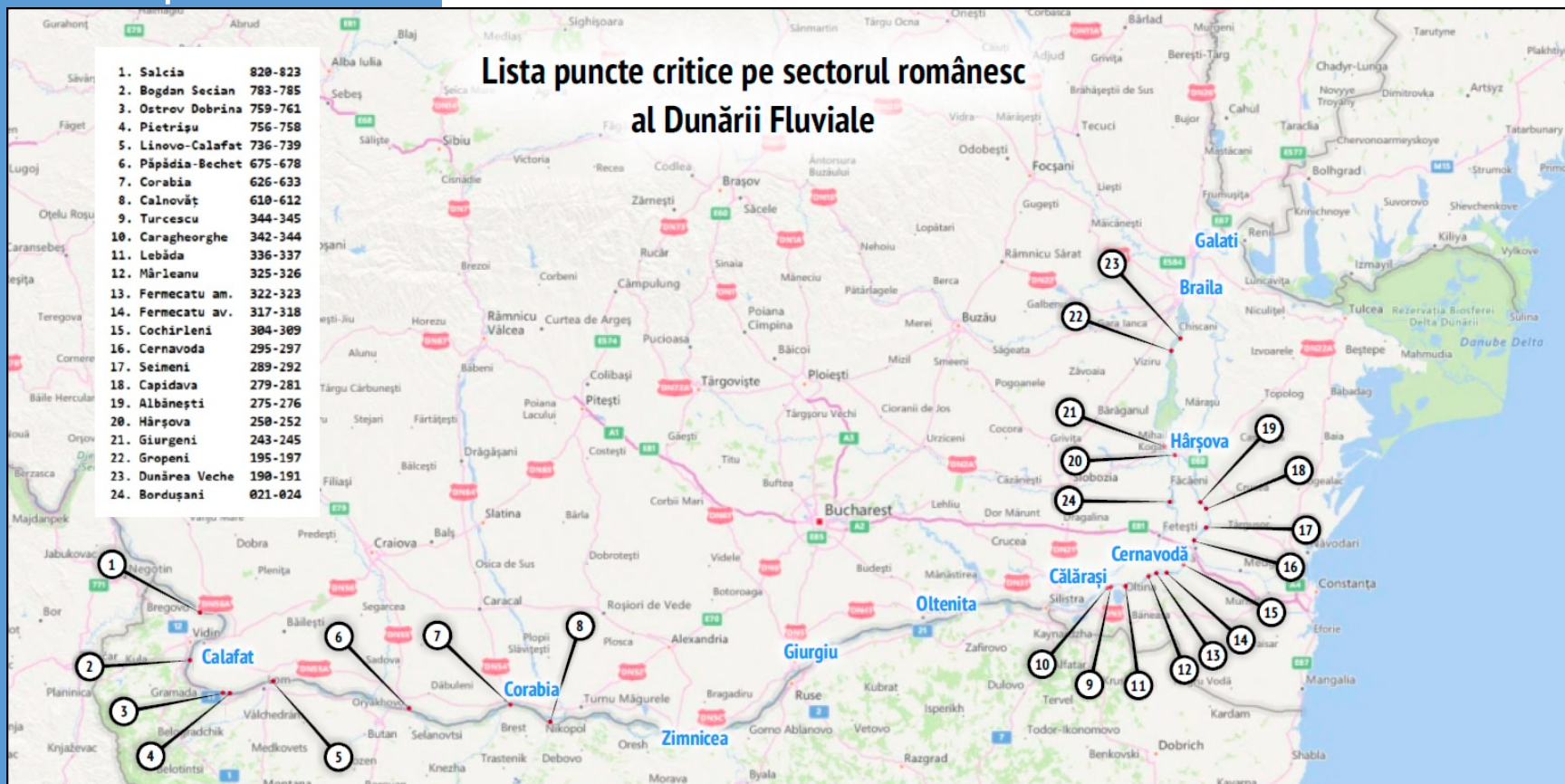
in critical points of Romanian Sector
of Danube (2019)

- General view of Romanian critical points
- AFDJ contracts for dredging
- AFDJ dredging works
- Navigation condition in 2019

General view of Romanian critical points

Lista puncte critice pe sectorul românesc al Dunării Fluviale

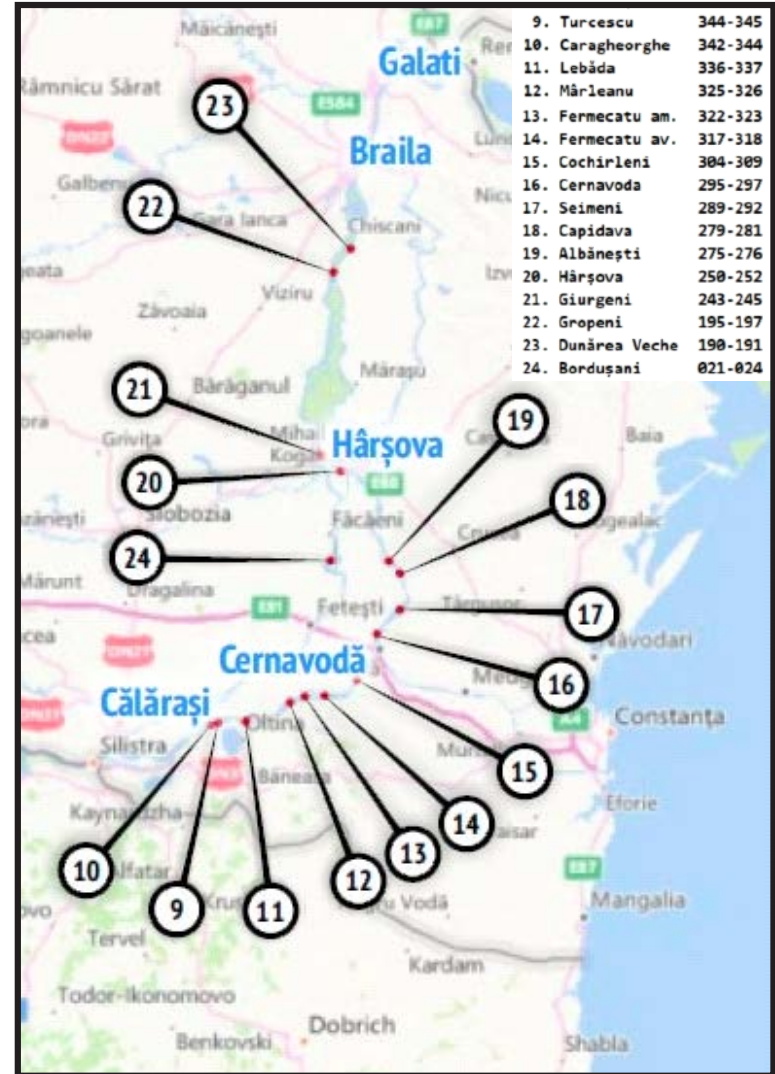
1. Salcia 820-823
2. Bogdan Secian 783-785
3. Ostrov Dobrina 759-761
4. Pietrișu 756-758
5. Linovo-Calafat 736-739
6. Păpădia-Bechet 675-678
7. Corabia 626-633
8. Calnovăț 610-612
9. Turcescu 344-345
10. Carageorghie 342-344
11. Lebăda 336-337
12. Mârleanu 325-326
13. Fermeccatu am. 322-323
14. Fermeccatu av. 317-318
15. Cochirleni 304-309
16. Cernavoda 295-297
17. Seimeni 289-292
18. Capidava 279-281
19. Albănești 275-276
20. Hârșova 250-252
21. Giurgeni 243-245
22. Gropeni 195-197
23. Dunărea Veche 190-191
24. Bordsuani 021-024



Detail of upstream Danube Romanian critical points



Detail of downstream Danube Romanian critical points



AFDJ contracts for
dredging (non
maritime sector)

Pack #1 — 225.000 m³

- km 675-678 Bechet
- km 611-613 Calnovăț

Pack #2 — 500.000 m³

- km 342-345 Caragheorghe
- km 304-310 Cochirleni

Pack #3 — 225.000 m³

- km 288-292 Seimeni
- km 274-277 Albănești
- km 243-246 Giurgeni

Total — 950.000 m³

AFDJ contracted dredging

km	Area	2019							m ³			
		march	april	may	june	july	august	sept.	contracted	dredged	by pack	remains
675-678	Bechet					25 711	3 486	3 675	225 000	32 872	88 355	136 645
611-613	Calnovat			55 483						55 483		
342-345	Caragheorghe		52 482			50 000			500 000	102 482	200 000	300 000
304-310	Cochirleni	97 518								97 518		
288-292	Seimeni		48 951						225 000	48 951	118 924	143 806
274-277	Albanesti		48 244							48 244		
243-246	Giurgeni			21 729						21 729		
		97 518	149 677	77 212		75 711	3 486	3 675	950 000	407 279	407 279	580 451

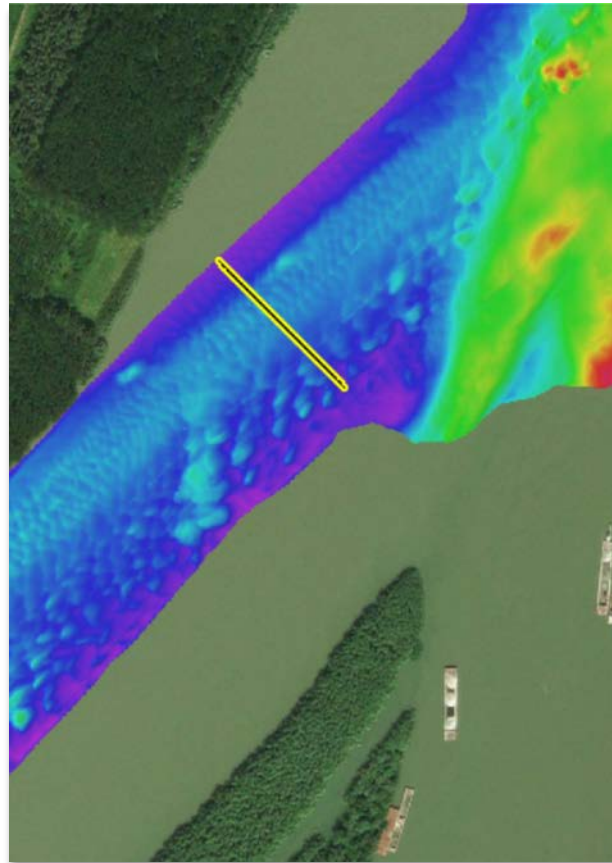
AFDJ dredging works (maritime sector)

		2019									
		january	february	march	april	may	june	july	august	september	dredged
km 153	Siret	56 141	124 453							in progress	180 594
Mm 73	Prut								144 895		144 895
Mm 56	Isaccea			202 521	80 712						283 233
Mm 40	Tulcea				42 281						42 281
		56 141	124 453	202 521	122 993				144 895		651 003

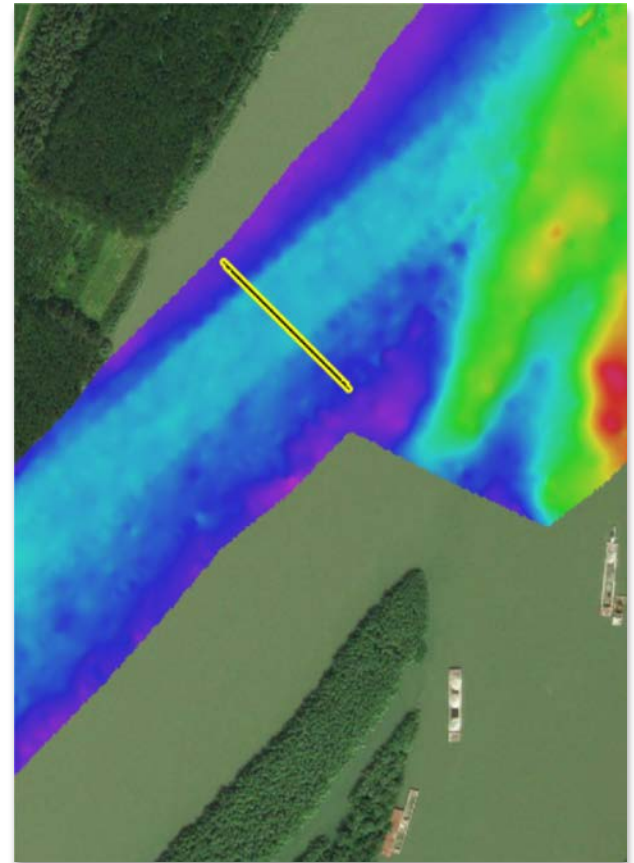
Navigation condition in 2019

Cochirleni km 304

before

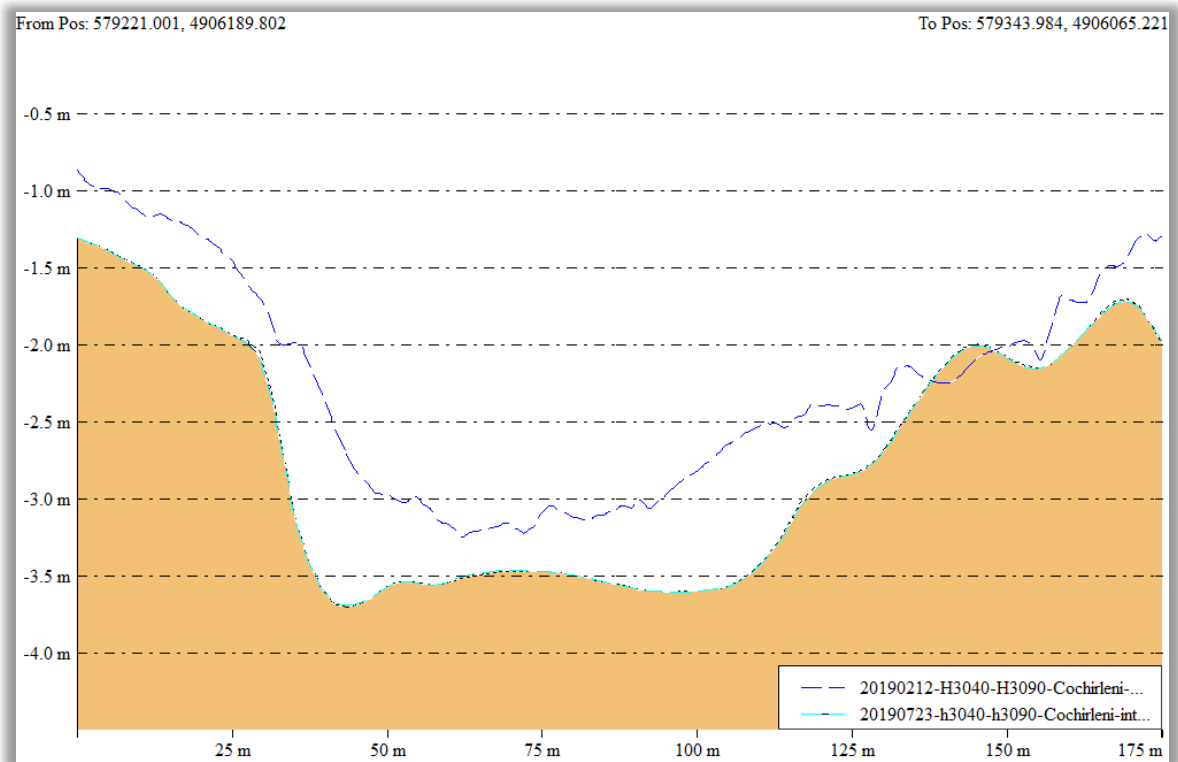


after

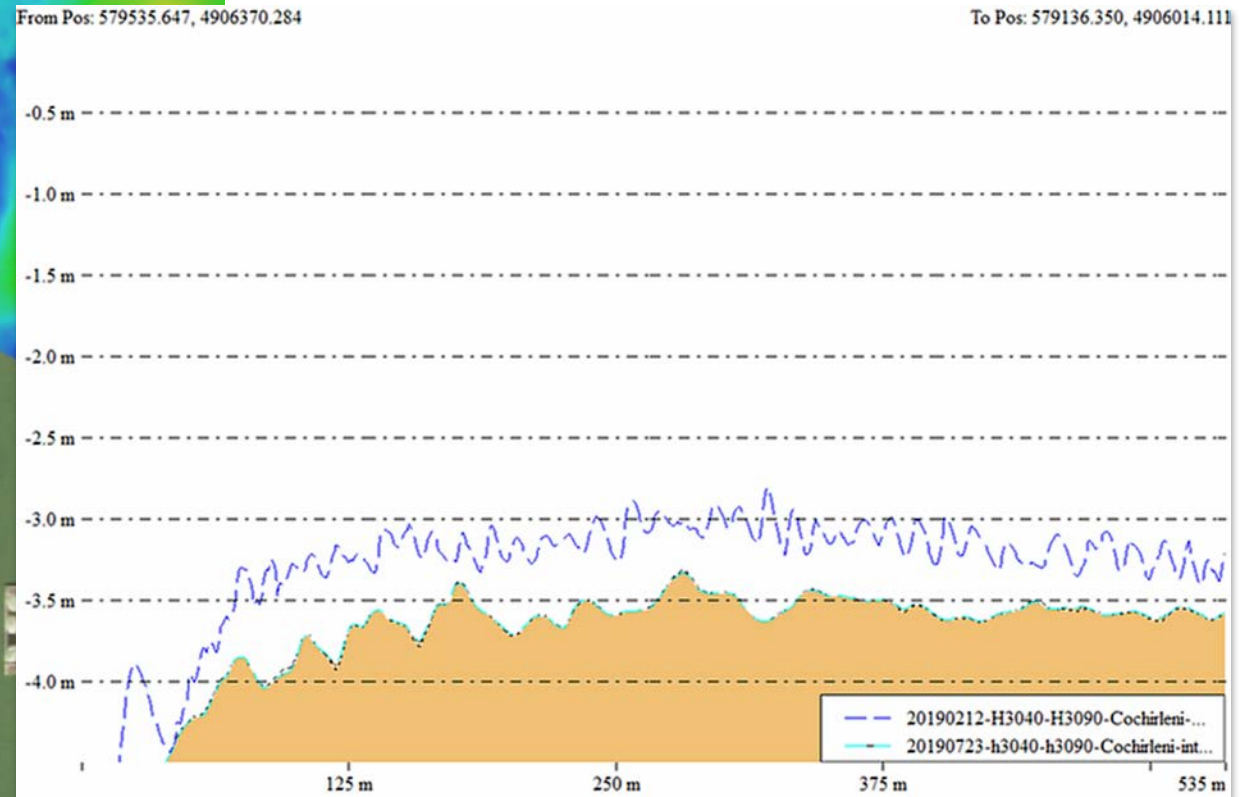
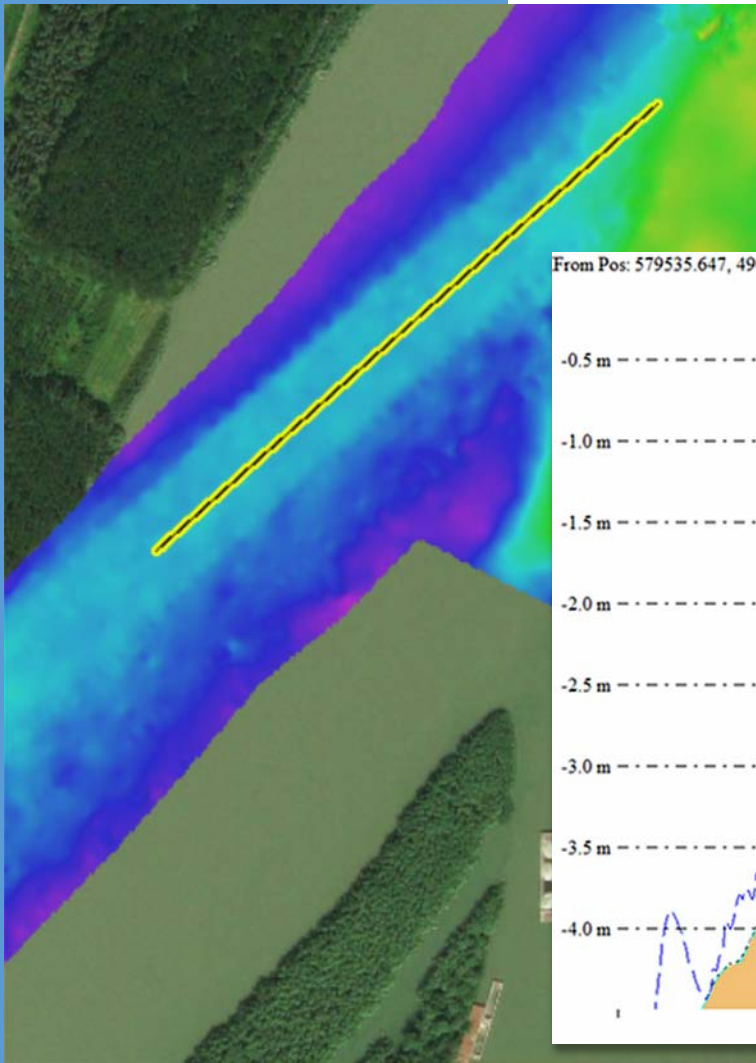


Navigation condition in 2019

cross section: before (12.02.2019)
after (23.07.2019)

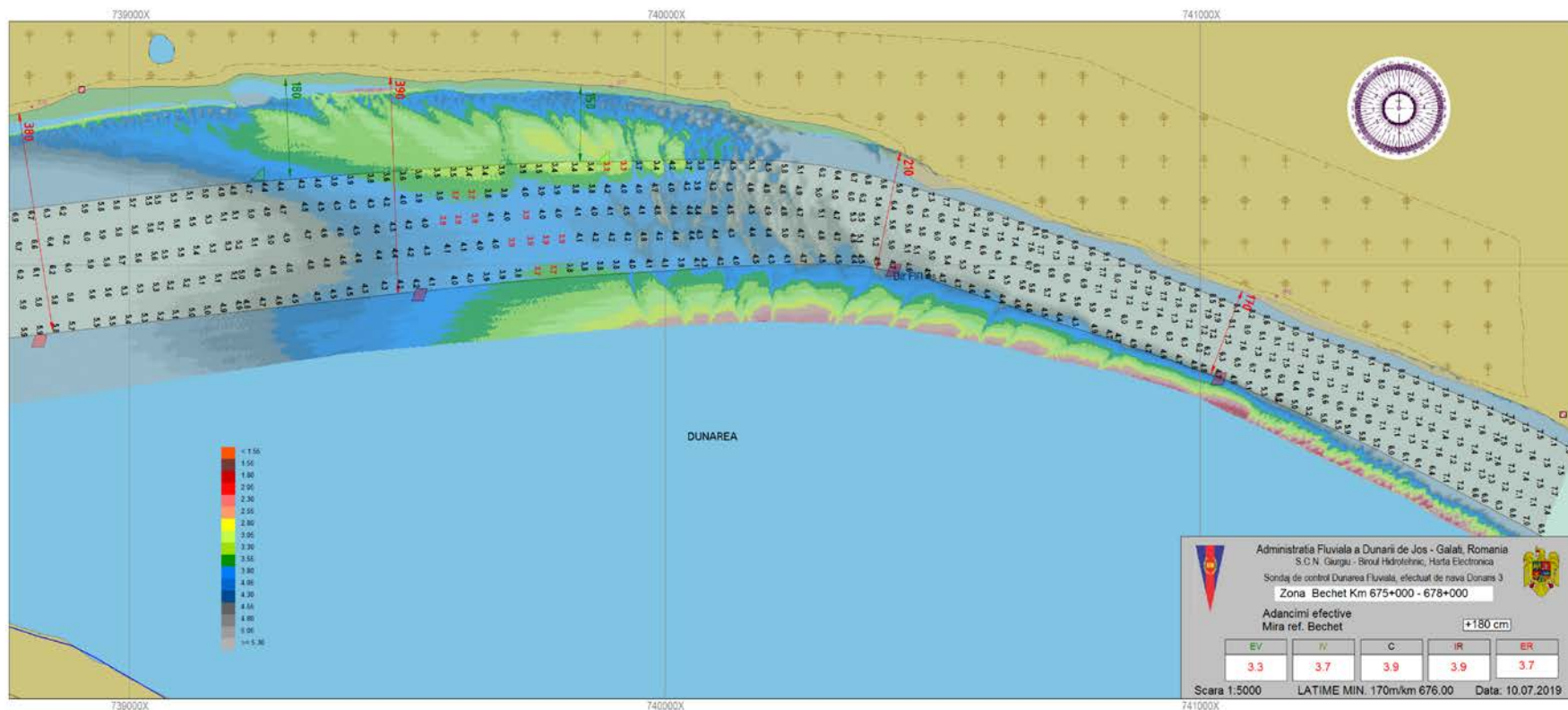


longitudinal profile: before (12.02.2019)
after (23.07.2019)



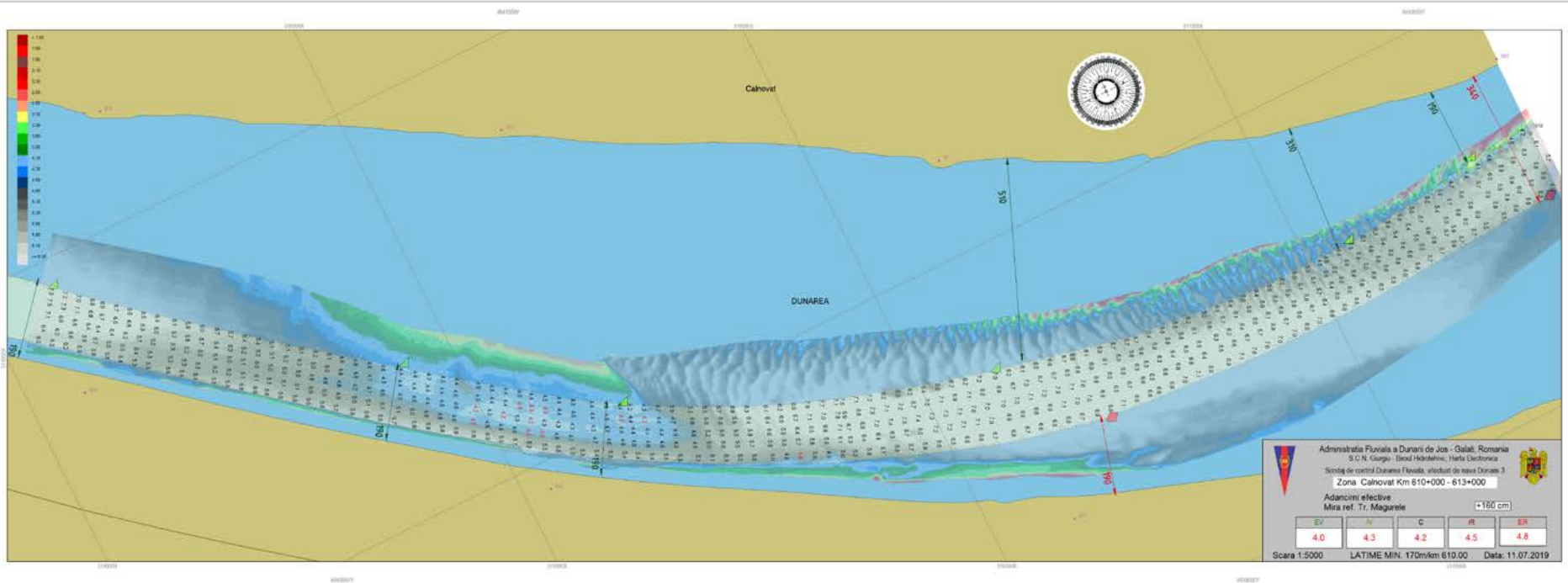
Navigation condition in 2019

Bechet km 677 - july 2019



Navigation condition in 2019

Calnovat km 610 - july 2019



Navigation condition in 2019

Corabia km 630 - july 2019

