

Port authority Slavonski Brod

Croatian port infrastructure – development of economy hub

Presented by: Vjekoslav Janković, expert associate

Šetalište braće Radić 19a, 35 000 Slavonski Brod

Trans-European Transport Network – Inland waterways and ports (Croatia)

- Port of Slavonski Brod is located on the left bank of the river Sava (364+000 to 362+200 rkm), 4 km southeast of the town of Slavonski Brod
- Port Slavonski Brod covers an area of approx 900.000 m²



Izvor: <http://ec.europa.eu/transport/infrastructure/tentec/tentec-portal/site/en/maps.html>

- It is an international port and entry port of European Union.

City of Slavonski Brod

- Brod-Posavina County:
158.575 inhabitants
- City of Slavonski Brod:
59.141 inhabitants

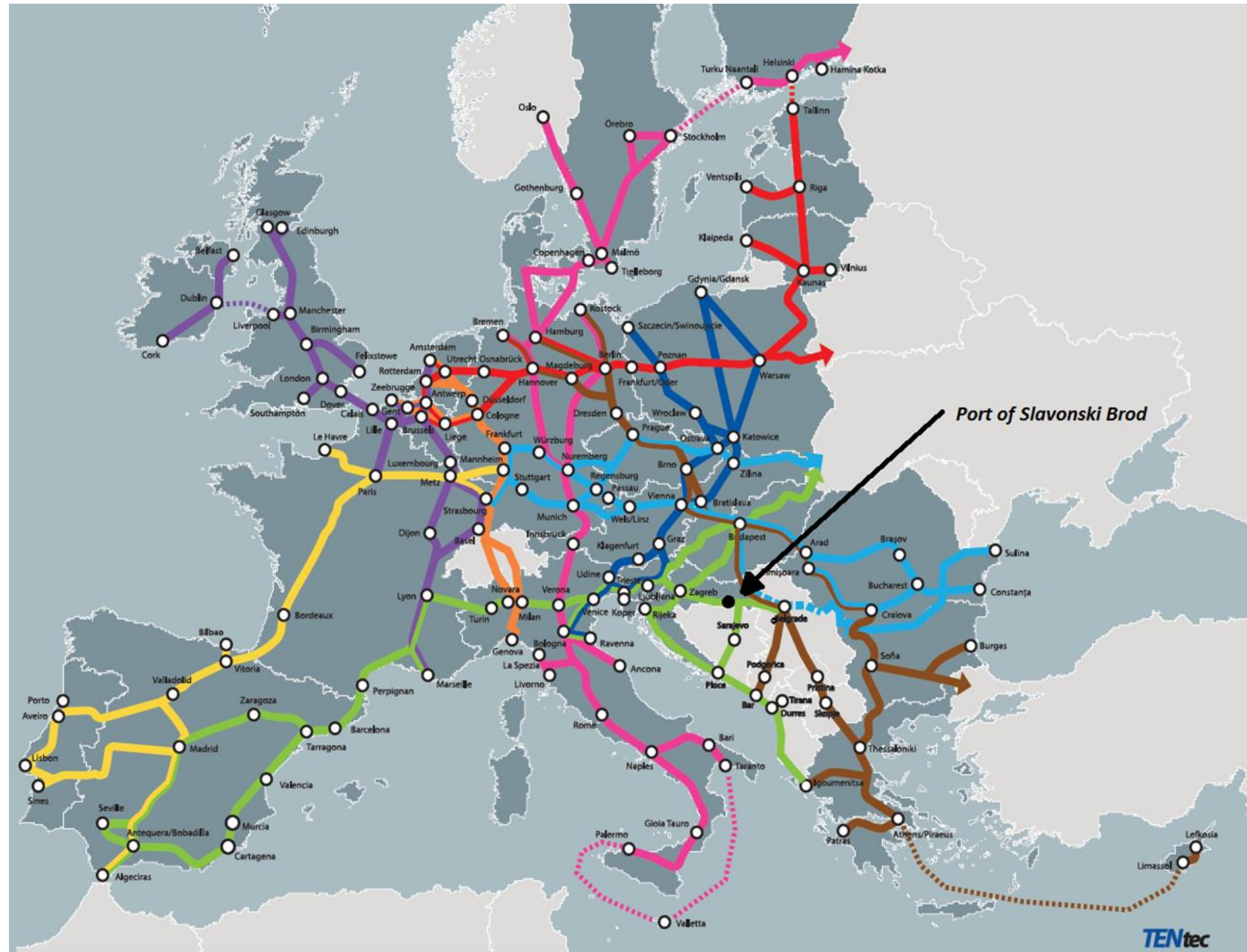


Position of the port of Slavonski Brod

- Port of Slavonski Brod is located on the border of the Republic of Croatia and Bosnia nad Hercegovina on rail transport corridor X and close to the junction of rail corridor X and road corridor Vc.
- Connection of the port with road and railway network enables handling and storage of cargo and diverting cargo to inland waterways towards the Danube and the Black Sea
- Through the railway network, port of Slavonski Brod is connected with the major Croatian maritime ports (Ploče, Split, Zadar and Rijeka)



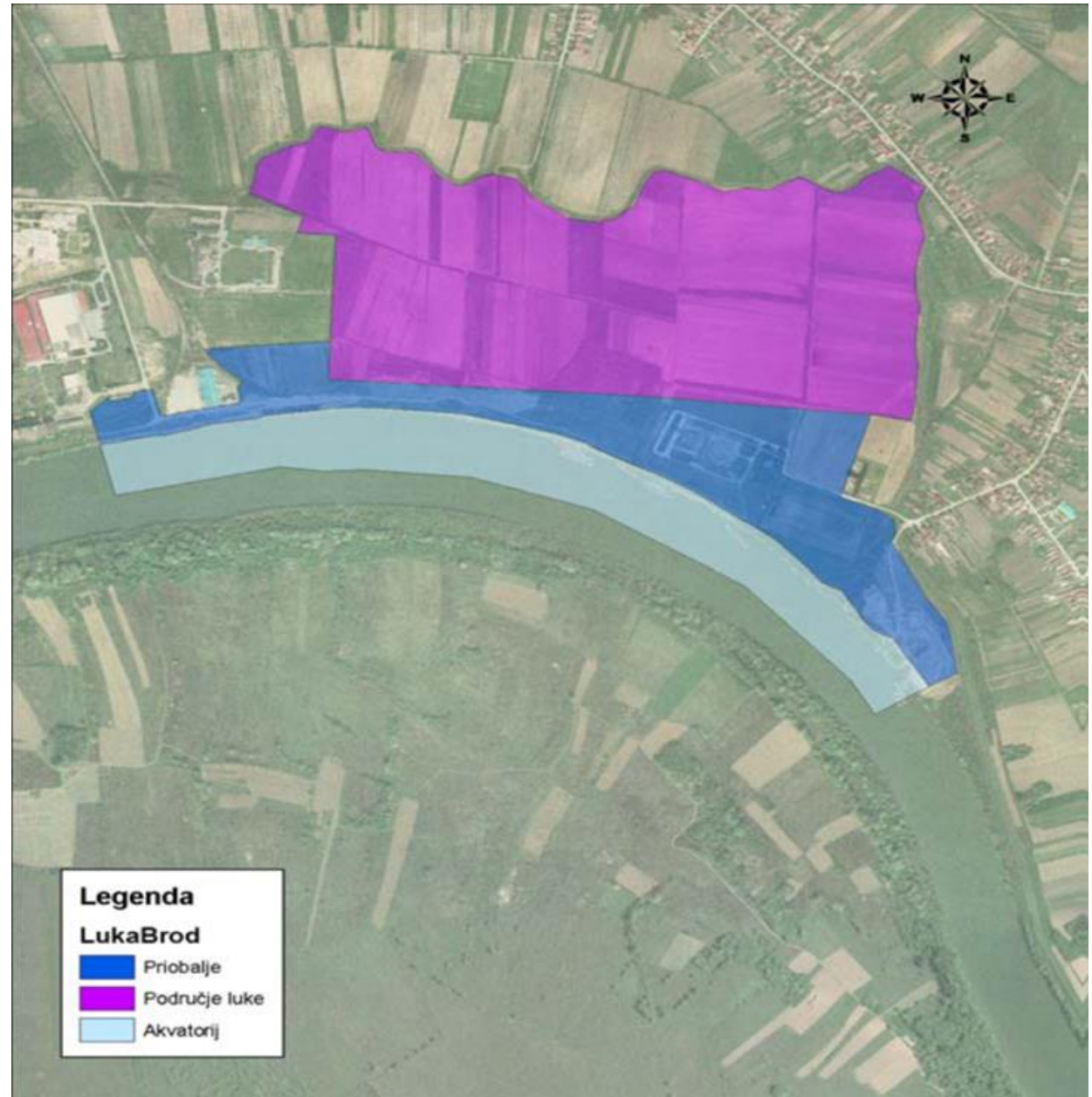
Trans-European Transport Network – TEN-T Core Network Corridors



Source: <http://ec.europa.eu/transport/infrastructure/tentec/tentec-portal/site/en/maps.html>

Port area

- The port area covers a total of 900,000 m²
- It consists of an operational part (blue) and an economic part (purple)



Operational part

Start:
year 2001



Vertical quay No. 3



- Construction of vertical quay No. 3 in length of 120 m with handling and logistics area with total surface of 3.910 m², finished in 2011.











Vertical quay No. 4 and 5



- Construction of vertical quay No. 4 in length of 107 m and No. 5 in length of 122 m with handling and logistic area behind quays of 1.400 m² size
- Container terminal, 1.400 m²
- Port weigh house for trucks and other vehicles
- Finished in 2021











Ongoing projects

Dangerous cargo terminal



- Port authority Slavonski Brod is currently working on Project „Study and Project Documentation for the Dangerous Cargo Terminal in Port Slavonski Brod”.
- This Project is plan to end in year 2024

Economic part

Basic infrastructure

- Roads and industrial rail
- Phone installations
- Sewage installation
- Plumbing installations
- Electrical installation



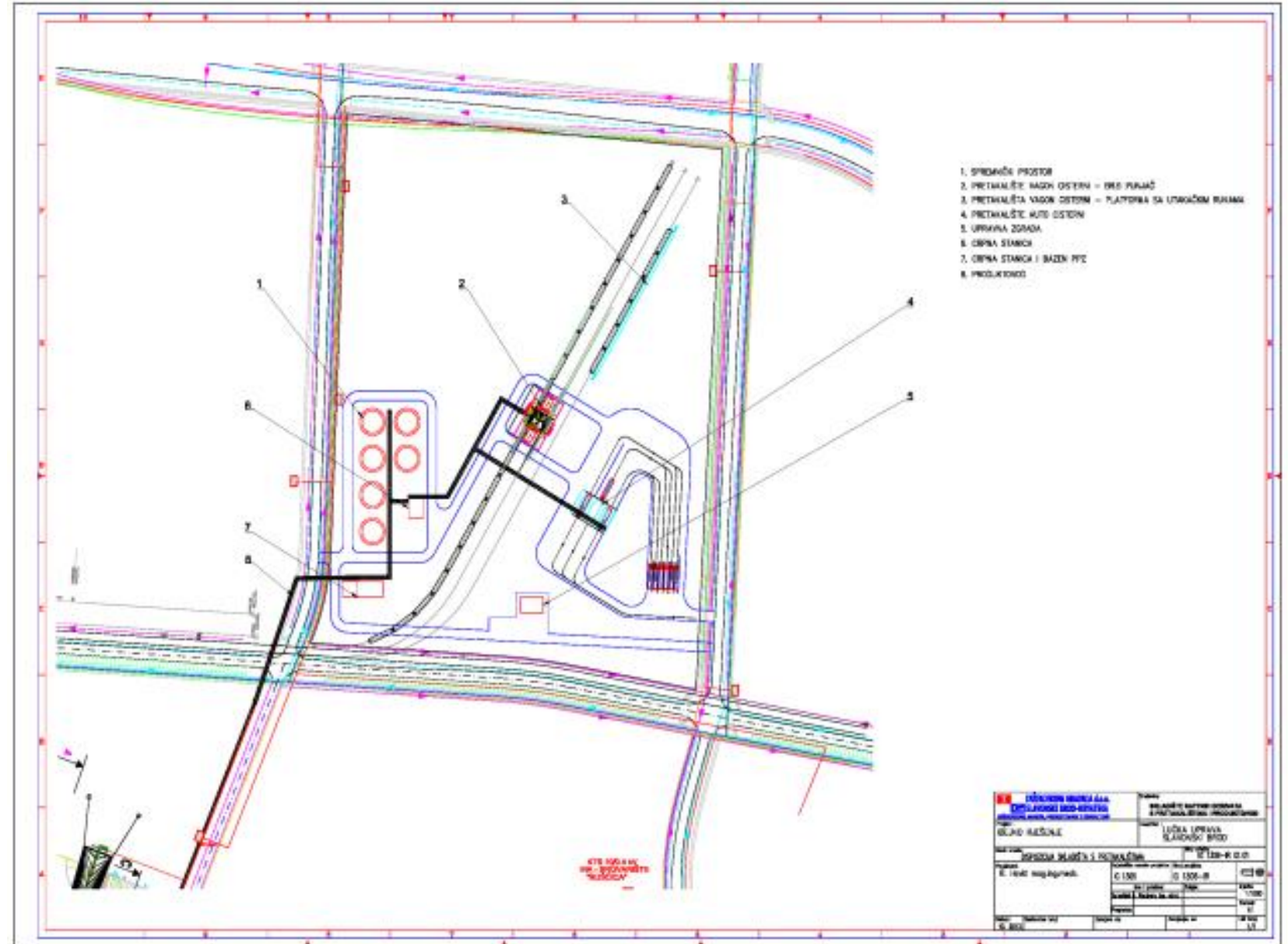


Development plans for Energy center

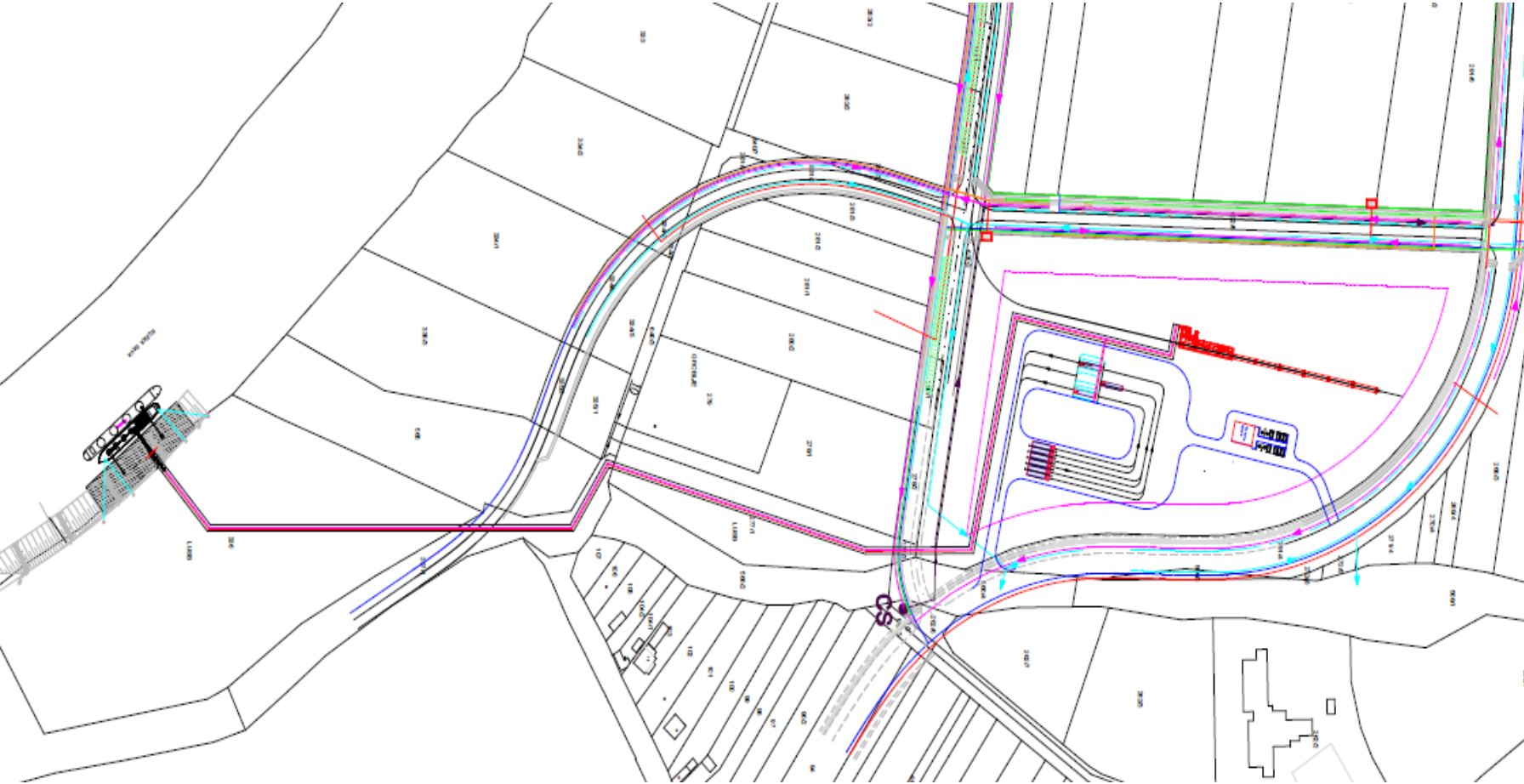
Preliminary project for potential concessionaires

Liquid cargo terminal

- Reserved surface: 83.000 m²
- 6 storage tanks
- 2 loading racks
- Pipeline to the Sava river



LNG Terminal

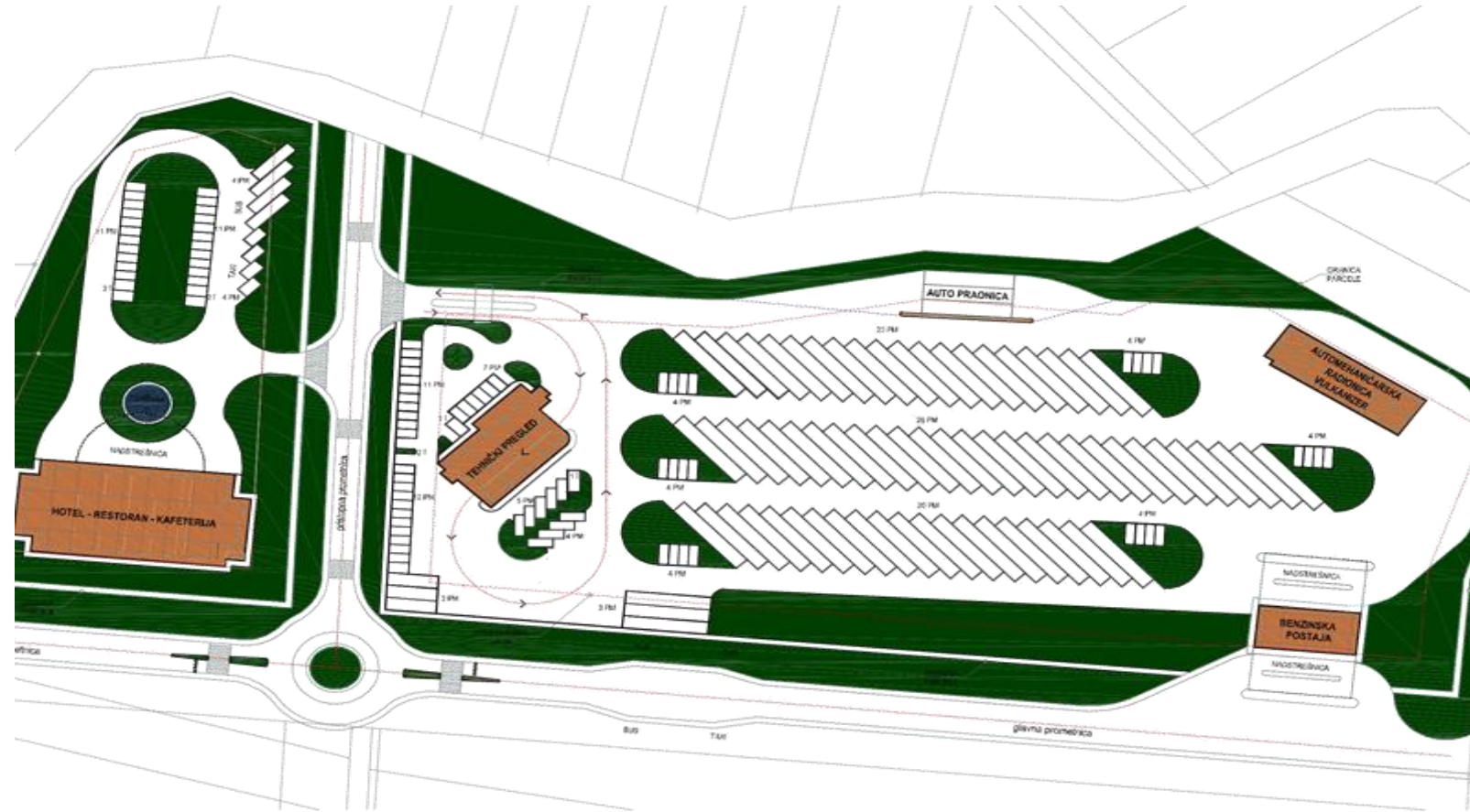


Project includes:

- Reserved surface: 55.000 m²
- tank construction
- construction of pipelines
- construction of a pier barge with a transfer station

Truck parking, technical center and accommodation block

- Reserved surface: 36.800 m²
- construction of a gas station
- construction of parking lots for trucks and cisterns and delivery vehicles
- construction of building for technical inspection with associated parking spaces
- construction of hotel and restaurant with parking spaces
- construction of service electrical and vulcanization shops and other accompanying facilities



For all your questions about the proposed projects you can contact us
on e-mail: info@lusb.hr

Thank you for listening!