

REPUBLIC OF CROATIA
MINISTRY OF THE SEA, TRANSPORT AND INFRASTRUCTURE
Directorate for Inland Navigation

Status of Inland Navigation in Croatia

LIDIJA HUBALEK
Budapest, 28th February 2023



REPUBLIKA HRVATSKA
Ministarstvo mora, prometa
i infrastrukture

CONTENT

Critical locations 2020-2022

Monitoring, rehabilitation and maintenance activities in 2022

Planned activities in 2023

Operational expenditures for conducted activities in 2022 and budget needs in 2023



Critical locations 2020-2022

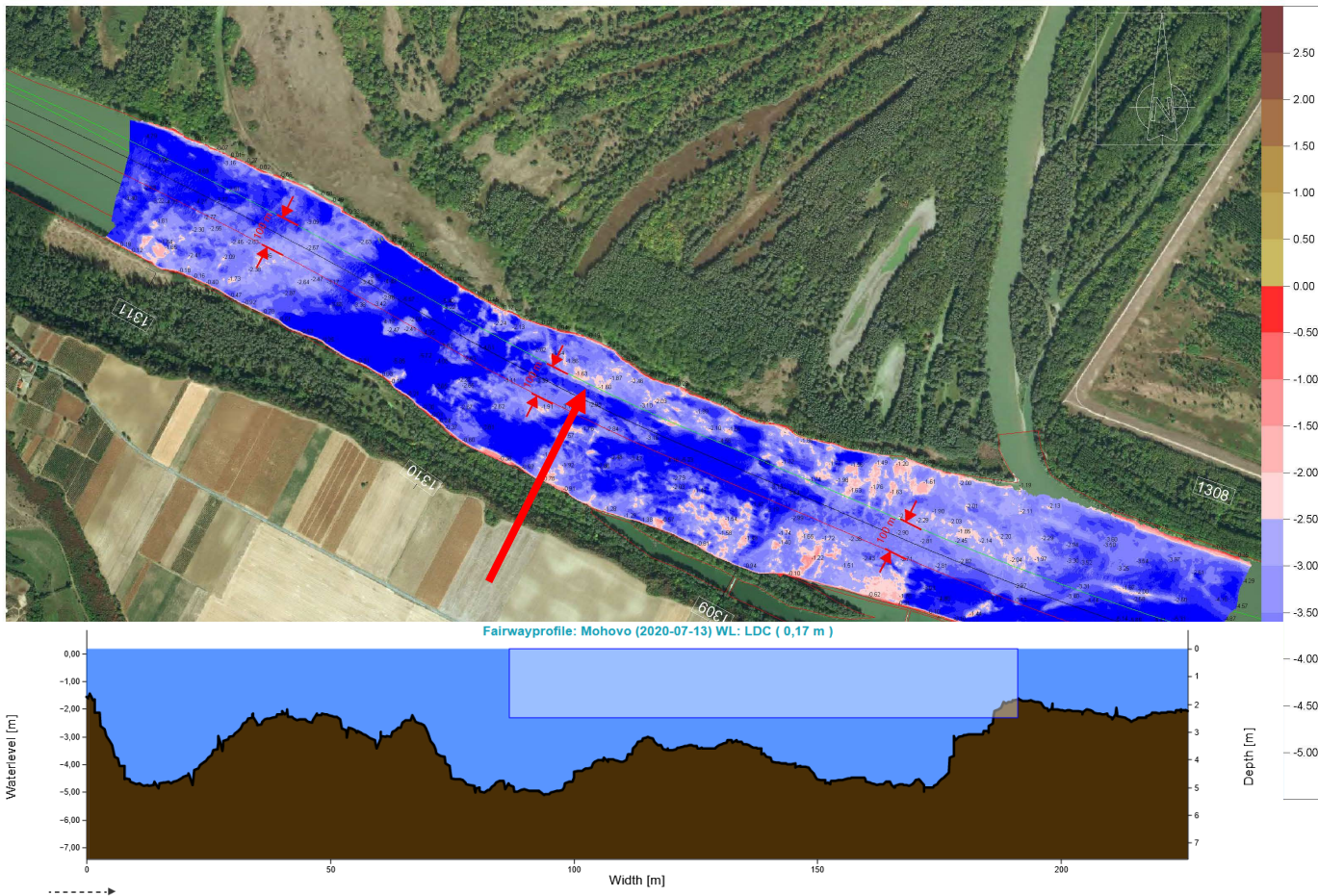
CS	Name of location	from rkm	to rkm
1	Bezdan	1,429.0	1,425.0
2	Siga Kazuk	1,424.2	1,414.4
3	Apatin	1,408.2	1,400.0
4	Židovski rukavac	1,397.2	1,389.0
5	Ušće Drave	1,388.8	1,382.0
6	Aljmaš	1,381.4	1,378.2
7	Staklar	1,376.8	1,373.4
8	Erdut	1,371.4	1,366.4
9	Bogojevo	1,366.2	1,361.4
10	Dalj	1,357.0	1,351.0
11	Borovo I	1,348.6	1,343.6
12	Borovo II	1,340.6	1,338.0
13	Vukovar	1,332.0	1,325.0
14	Sotin	1,324.0	1,320.0
15	Opatovac	1,315.4	1,314.6
16	Mohovo	1,311.4	1,307.6
17	Bačka Palanka	1,302.0	1,300.0



- 17 critical locations in total length of 76.4 rkm
- on most sections there is a problem with insufficient waterway width
- Sotin & Mohovo → limited depth during LNWL



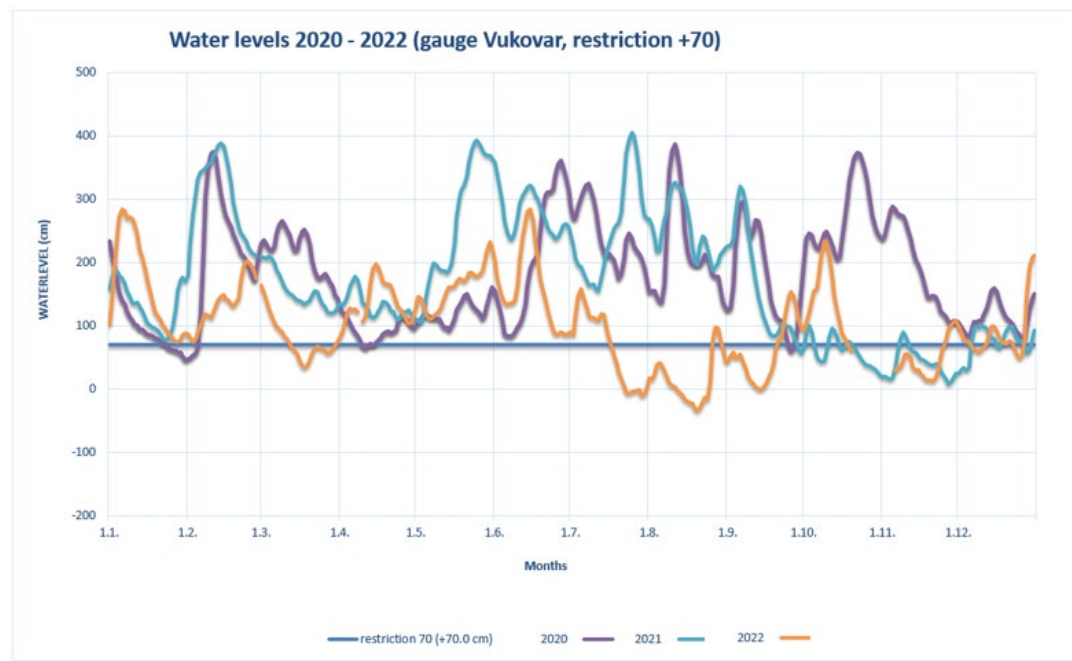
Mohovo sector



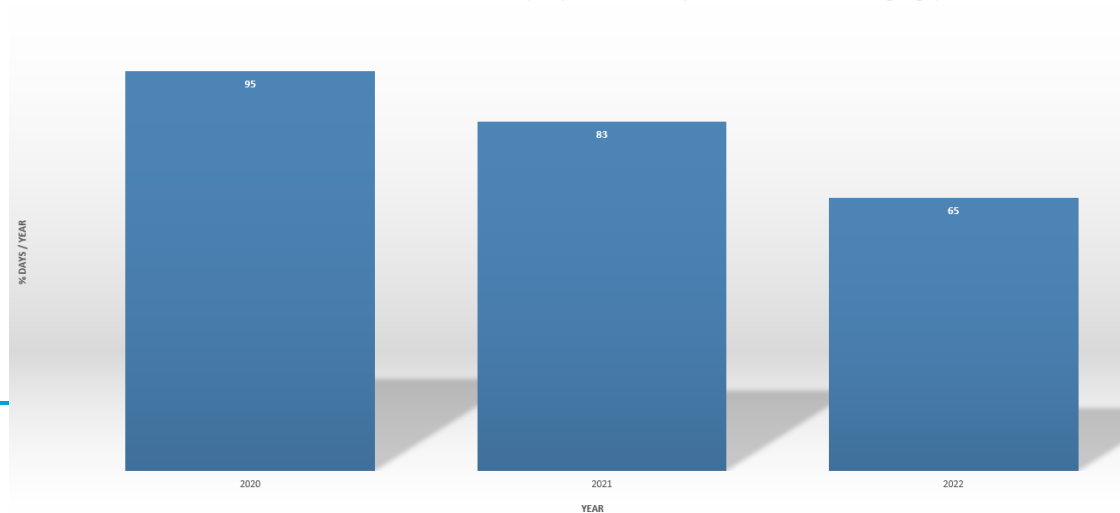
- due to the rocky river bed fairway width is limited to 100m
- navigable channel depth of 2.5m is ensured for water levels +70 and above on the Vukovar gauge



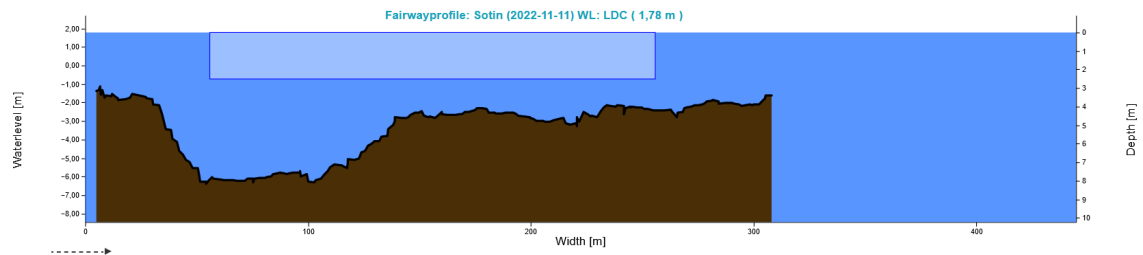
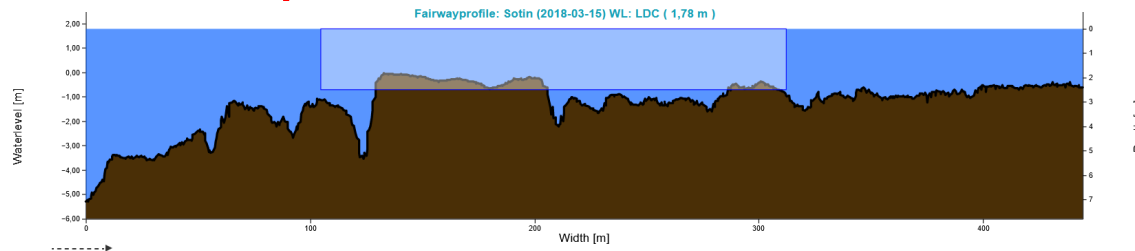
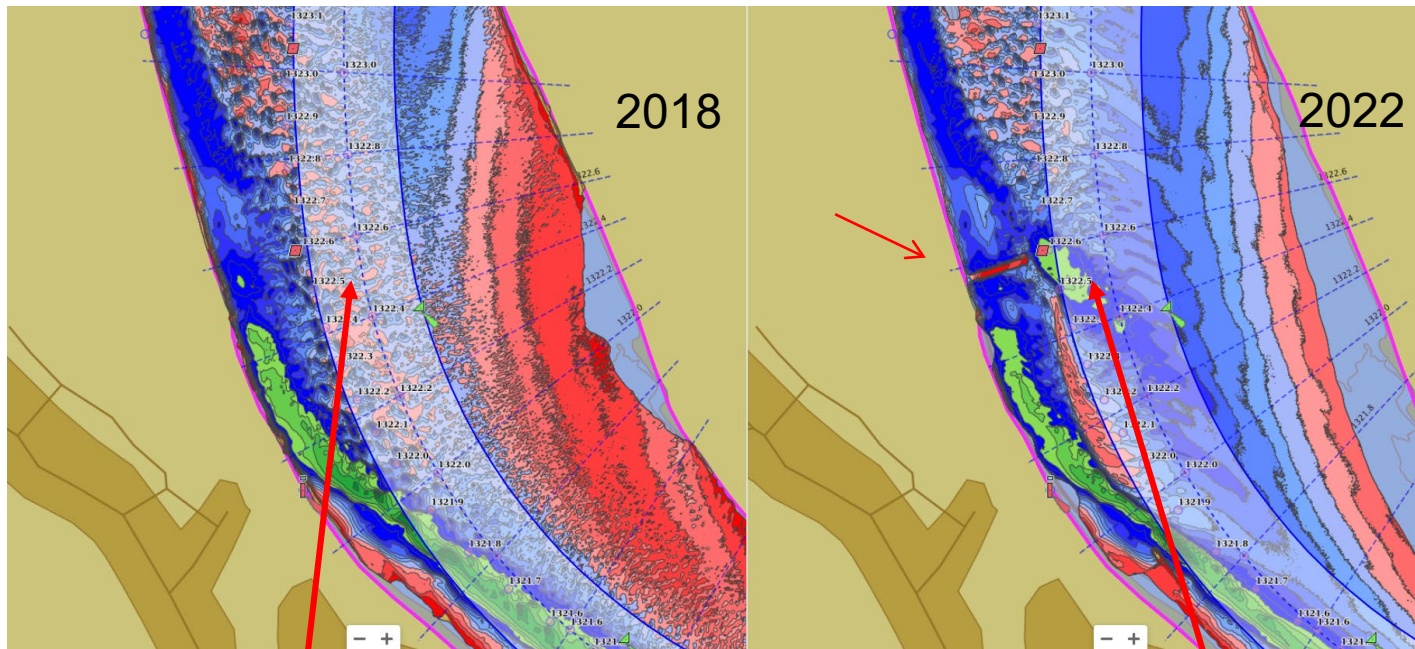
Mohovo sector



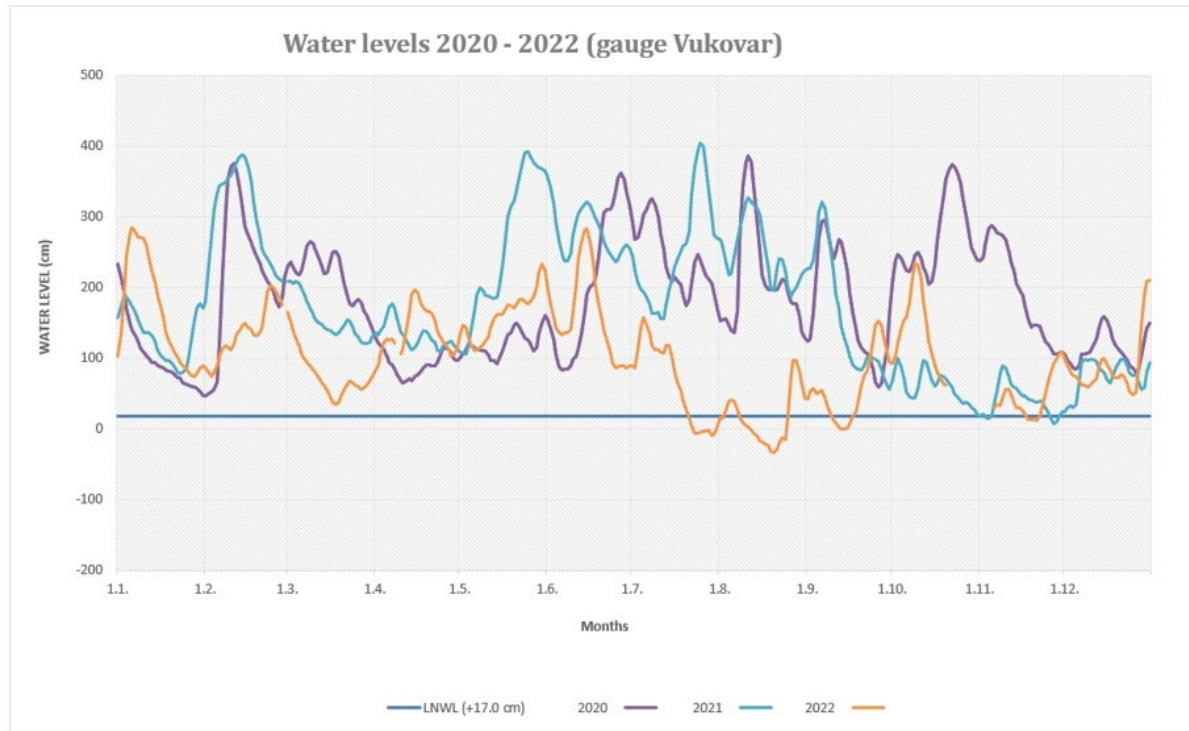
Available fairway depths, Mohovo (restriction +70 Vukovar gauge)



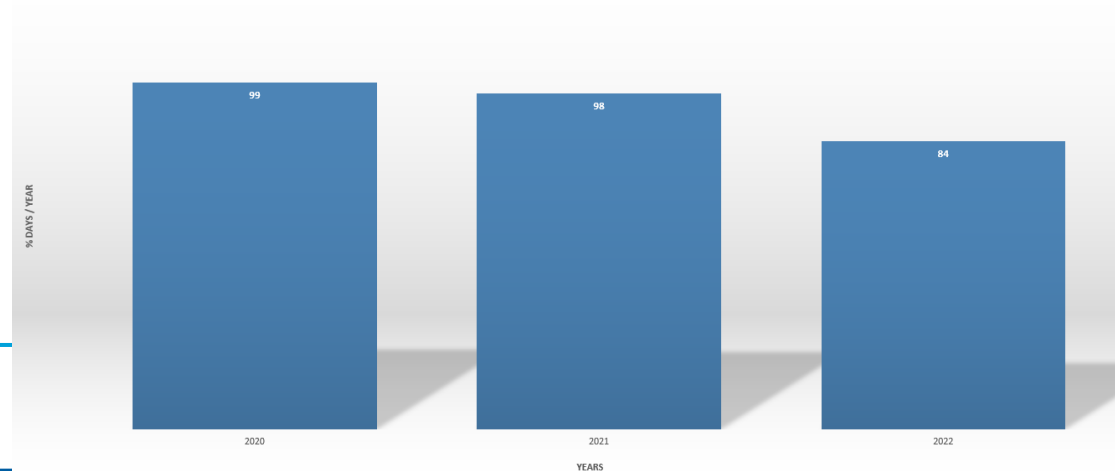
Sotin critical location 2020-2022



Sotin critical location 2020-2022

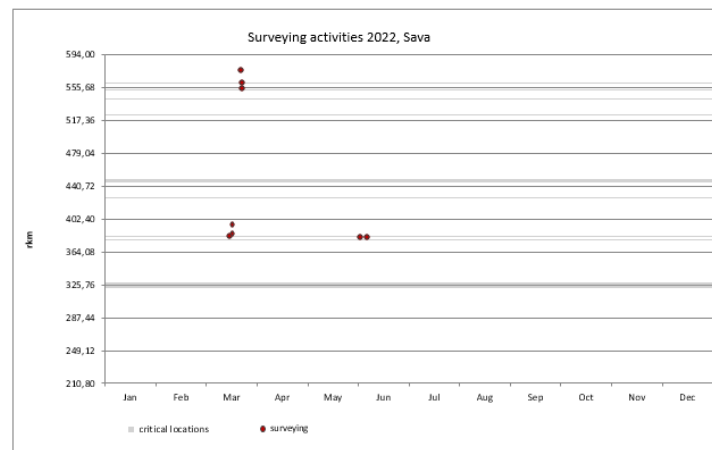
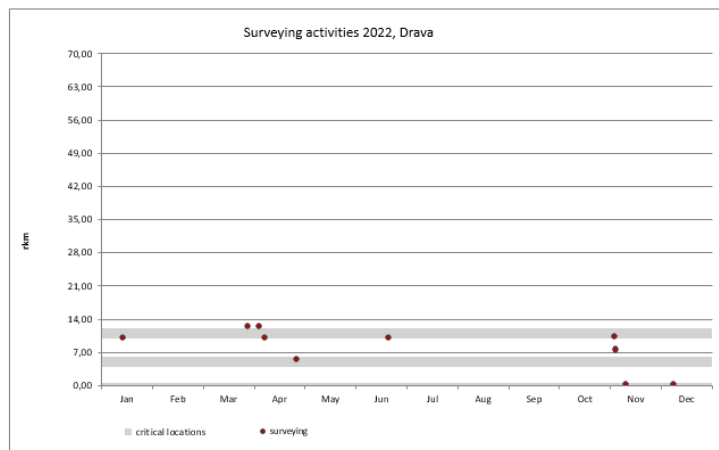
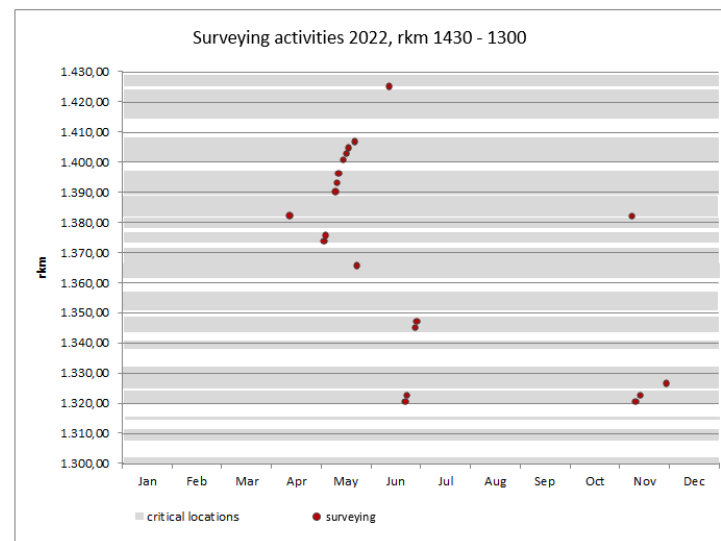


Available fairway depths, Sotin 200m width (+17 cm Vukovar gauge)



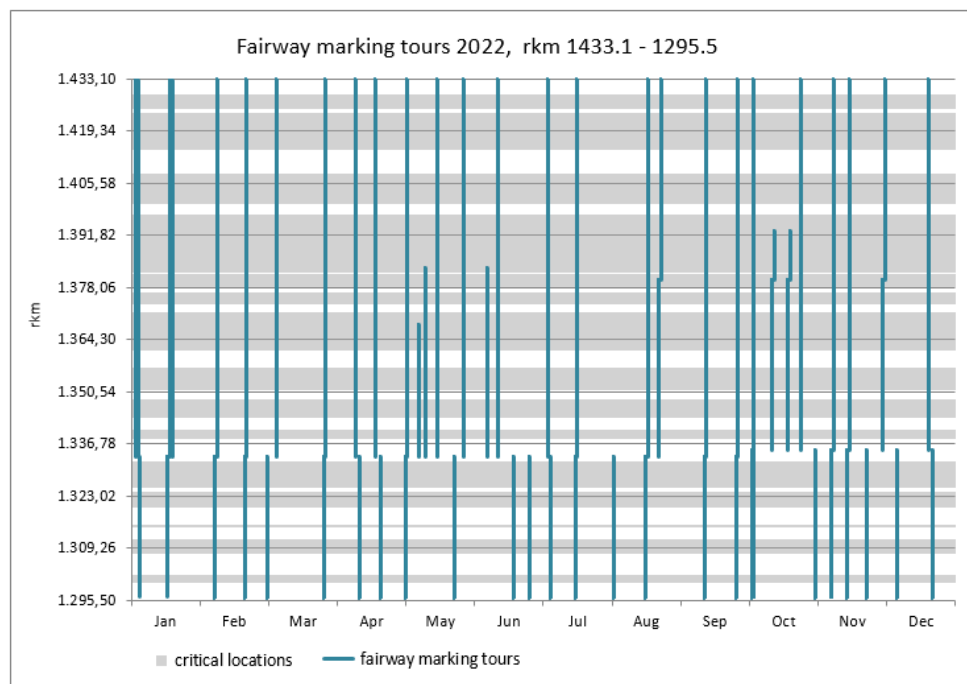
Monitoring, rehabilitation and maintenance activities in 2022

Monitoring activities - (bathymetric survey) were regularly performed on Danube, Drava and Sava rivers



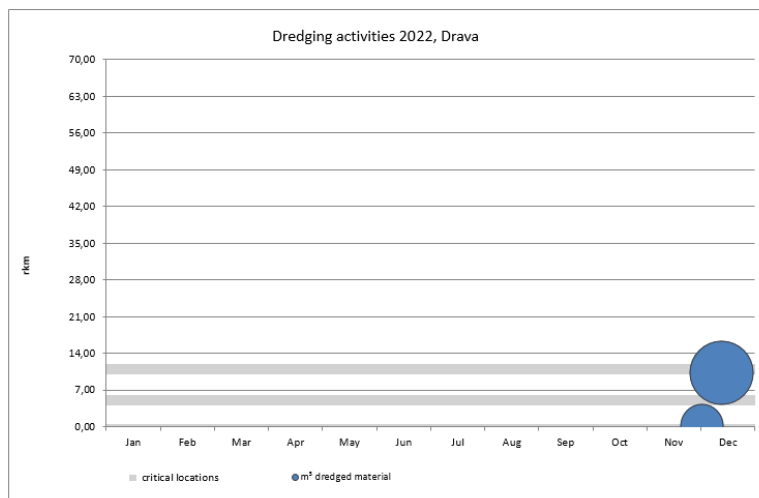
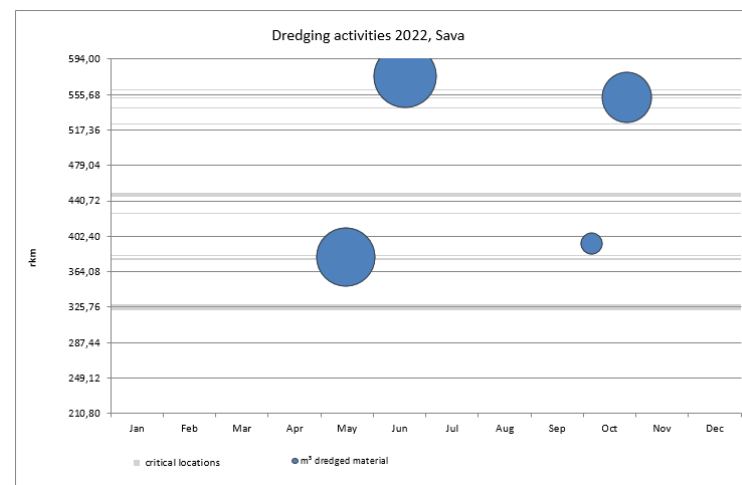
Monitoring, rehabilitation and maintenance activities in 2022

Marking department provided regular services on all navigable rivers in HR



Monitoring, rehabilitation and maintenance activities in 2022

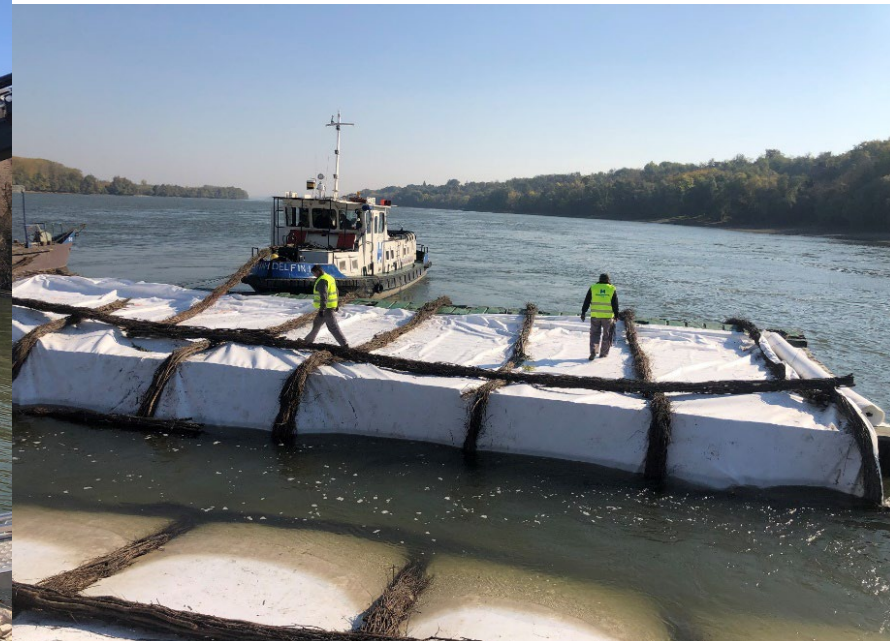
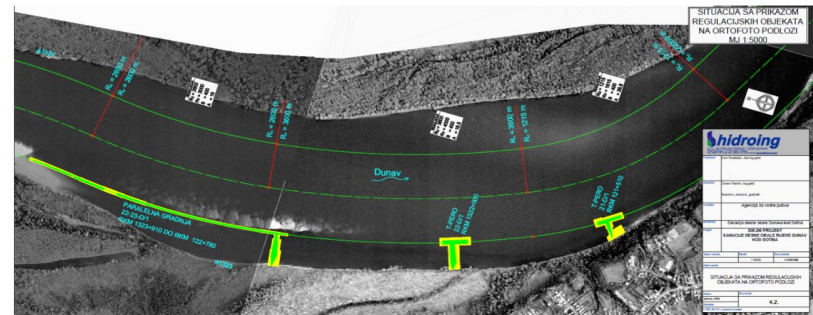
Maintenance activities (dredging) on Sava and Drava rivers app 70.500 m³



Planned activities in 2023

National OP – Sotin - regulation works on the Danube river on rkm 1322

- 2/2020 – 12/2023
- App 3,5 mil€



Planned activities in 2023

National OP – winter harbour Opatovac on rkm 1314

- 3/2020 – 12/2023
- App 4,2 mil€
- First inland winter harbor in HR

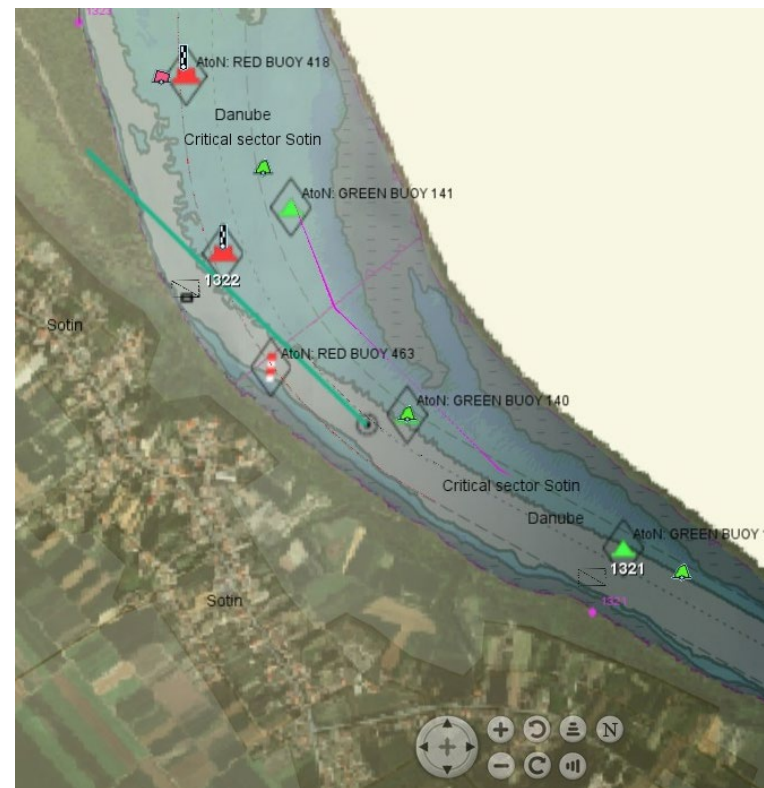


Planned activities in 2023

National OP – Modernisation of inland waterways marking system

- Two marking vessels (Sava & Drava rivers)
- AtoNs, upgrade of existing AIS system

- 1/2020 – 12/2023
- App 3,6 mil€



Planned activities in 2023

CEF - Preparation of EIA Study and Design Documentation for the river Sava IW section Jaruge – Novi Grad (329-315 rkm and 312+200-300 rkm)

- 10/2017 – 12/2023

- 650.000,00€

- EIA, Location permits, Main design & Construction permits



Operational expenditures for conducted activities in 2022 and budget needs in 2023

Need areas	Operational expenditures 2022	Required operational budget 2023	Secured operational budget 2023	Remaining financing gap 2023
Minimum fairway parameters (width/depth)	1 315 000	2 000 000	2 000 000	0
Surveying of the riverbed	n/a	n/a	n/a	n/a
Water level gauges	-	17 000	17 000	0
Marking of the fairway	350 000	400 000	400 000	0
Availability of locks / lock chambers	n/a	n/a	n/a	n/a
Information on water levels and forecasts	30 000 (DHMZ)	30 000 (DHMZ)	30 000 (DHMZ)	0
Information on fairway depths (national OP)	150 000	-	-	-
Information on marking plans	n/a	n/a	n/a	n/a
Meteorological information	5 000 (DHMZ)	5 000 (DHMZ)	5 000 (DHMZ)	0
Other needs (national OP)	App 5.3 mil€	App 4.5 mil€	App 4.5 mil€	App 4.5 mil€
Sum (Euro)	7 150 000	6 952 000	6 952 000	0



Thank you for your attention!

Lidija Hubalek, DI
Tel: 0038532445051
MMPI
32000 Vukovar
web: www.vodniputovi.hr
Web: mmpi.gov.hr

