



The Republic of Serbia



# The Port Governance Agency

Expert Meeting on Development of Ports and  
Port Operations  
March 2023

# MoU\_PGA\_APDM



Signed on September 9, 2021 in Belgrade, in the presence of:

- Minister of construction, transport and infrastructure of the Republic of Serbia
- H. E. Ambassador of Romania Ms. Silvia Davidoiu
- H.E. Ambassador of the Republic of Serbia Mr Stefan Tomasevic



Bilateral meeting of delegations after the signing



The Republic of Serbia  
Port Governance Agency

# Goals of MoU and Working group

---

## Memorandum of Understanding:

- Improvement of port activities
- Increasing the visibility of Serbian and Romanian Danube ports
- The development of economic activities in their hinterland
- Integration into international multimodal transport chains

## Working group:

- Development of terminals for container transport
- Participation in the upcoming projects of the Danube Transnational Programme
- Exchange of experience and know-how in the field of international passenger transport and environmental protection





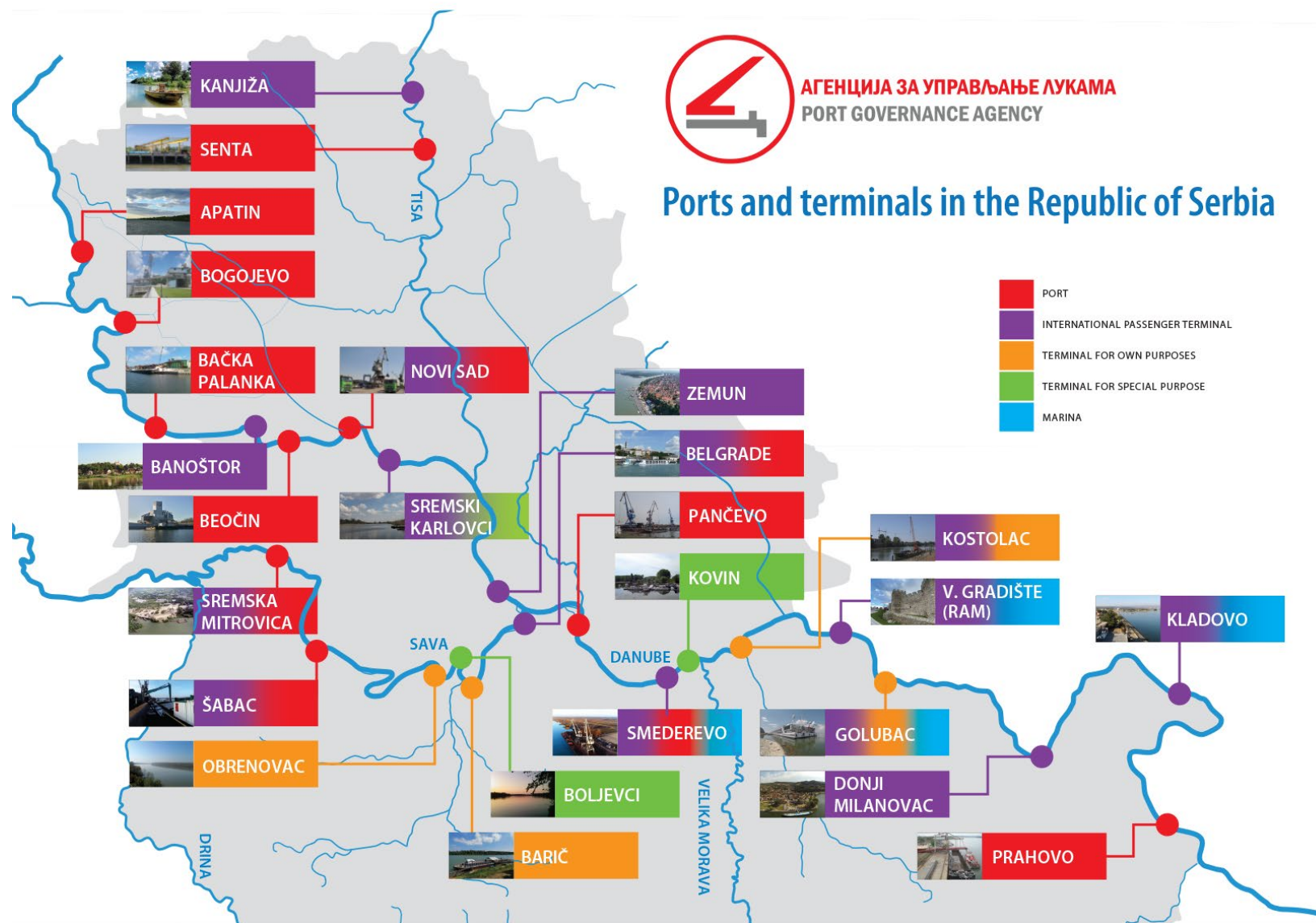
# Study visit (2022)



Galati, May 4 and 5 2022

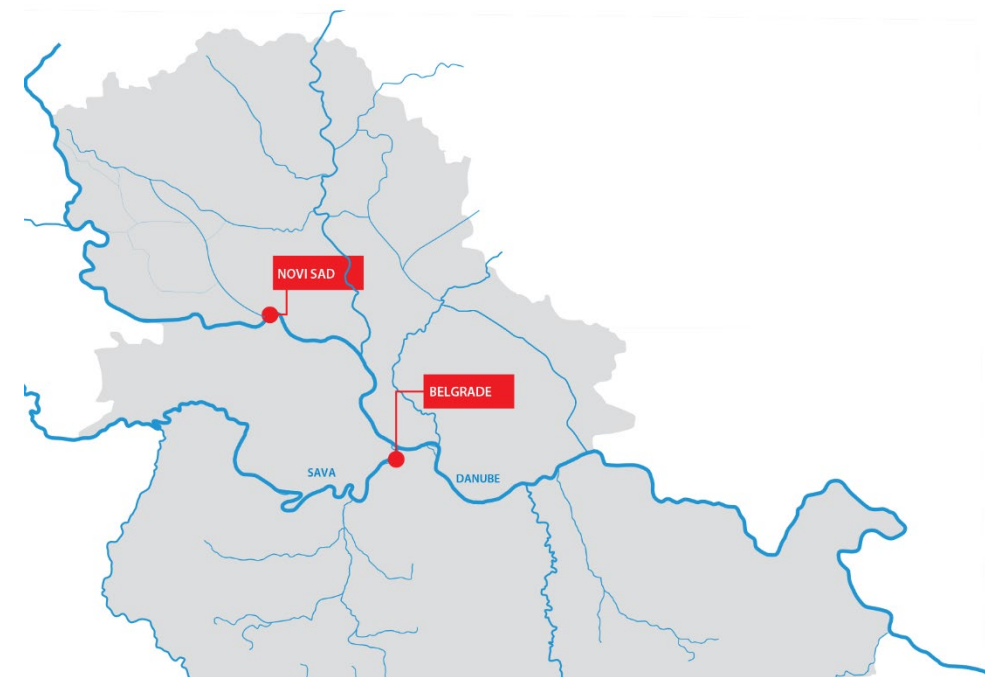


# Additional information - TEN-T Network





# Serbian ports on TEN-T Core network (current)



## Port of Belgrade (Danube)

- Transshipment in 2022 (port area): 112.000 t
- Cargo: Bulk, General
- Port operators: 1

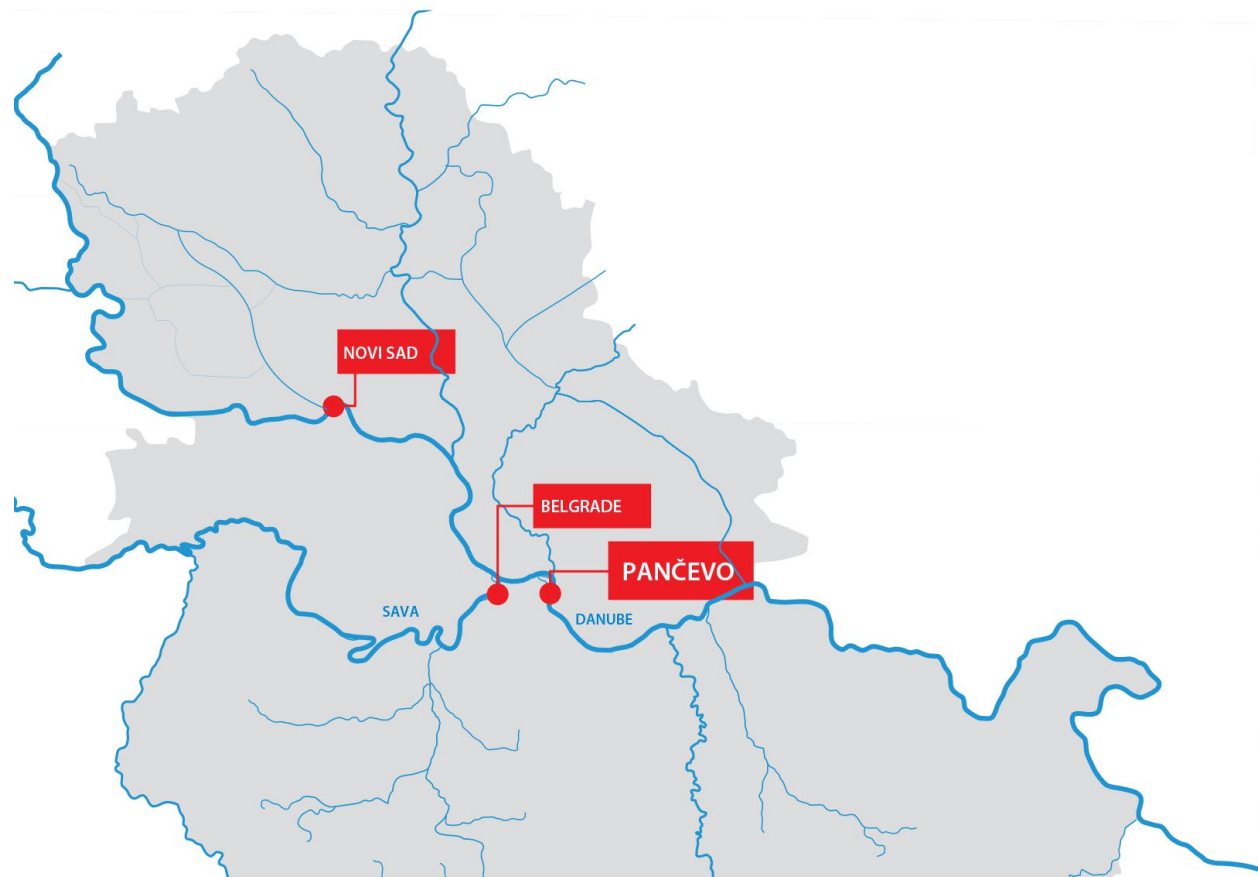


## Port of Novi Sad (Danube)

- Transshipment in 2022 (port area): 1 million t
- Cargo: Grain, Oil and oil products
- Port operators: 2



# Serbian ports on TEN-T Core network (expansion)

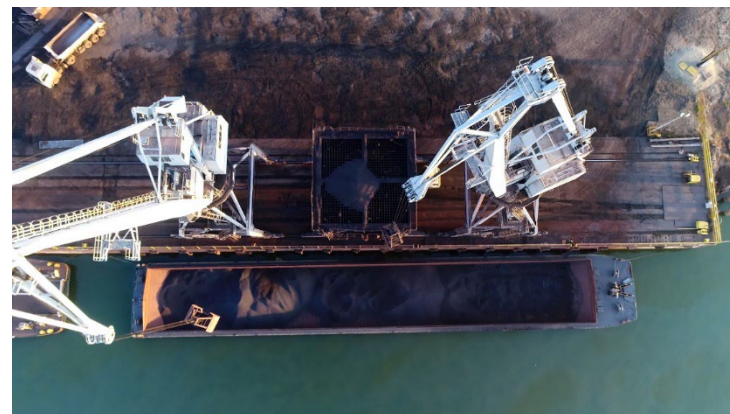
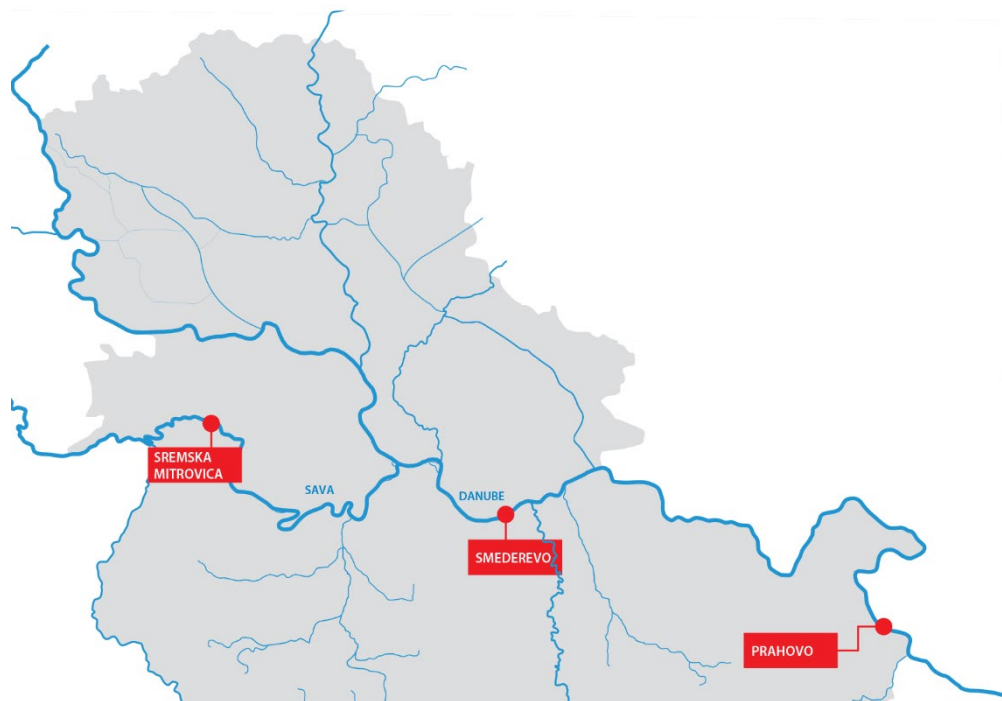


Port of Pancevo (Danube)

- Transshipment in 2022 (port area): 1.6 million t
- Cargo: Grain, Oil and oil products, Fertilizers
- The largest port area in RS
- Port operators: 4



# Serbian ports on TEN-T Comprehensive network



Port of Smederevo (Danube)

- Transshipment in 2022 (port area): 3 million t
- Cargo: Ore, Metallurgical products, Coal
- Port operators: 4



Port of Prahovo (Danube)

- Transshipment in 2022 (port area): 932.000 t
- Cargo: Bulk cargo, General cargo
- Port operators: 2



Port of Sremska Mitrovica (Sava)

- Transshipment in 2022 (port area): 1.2 million t
- Cargo: Gravel, sand and stone aggregates
- Port operators: 1





# Thank you for your attention!

Port Governance Agency  
Nemanjina 4, Belgrade  
E-mail: [office@aul.gov.rs](mailto:office@aul.gov.rs)  
website: [www.aul.gov.rs](http://www.aul.gov.rs)



The Republic of Serbia  
Port Governance Agency