



12.13.2024 | Florian Röthlingshöfer, Director Port of Switzerland



RPIS – Rhine Ports Information System



DANUBE COMMISSION
Expert Meeting on Development of Ports and Port Operations

Basel



Port of Switzerland

- Promotion of navigation on the Rhine
- Switzerland's gateway to the world and national logistics hub (Water–Rail–Road)
- Swiss Rhine Navigation Authority (enforcement of national and international law)
- Landlord & Infra-Owner

OWNERS:

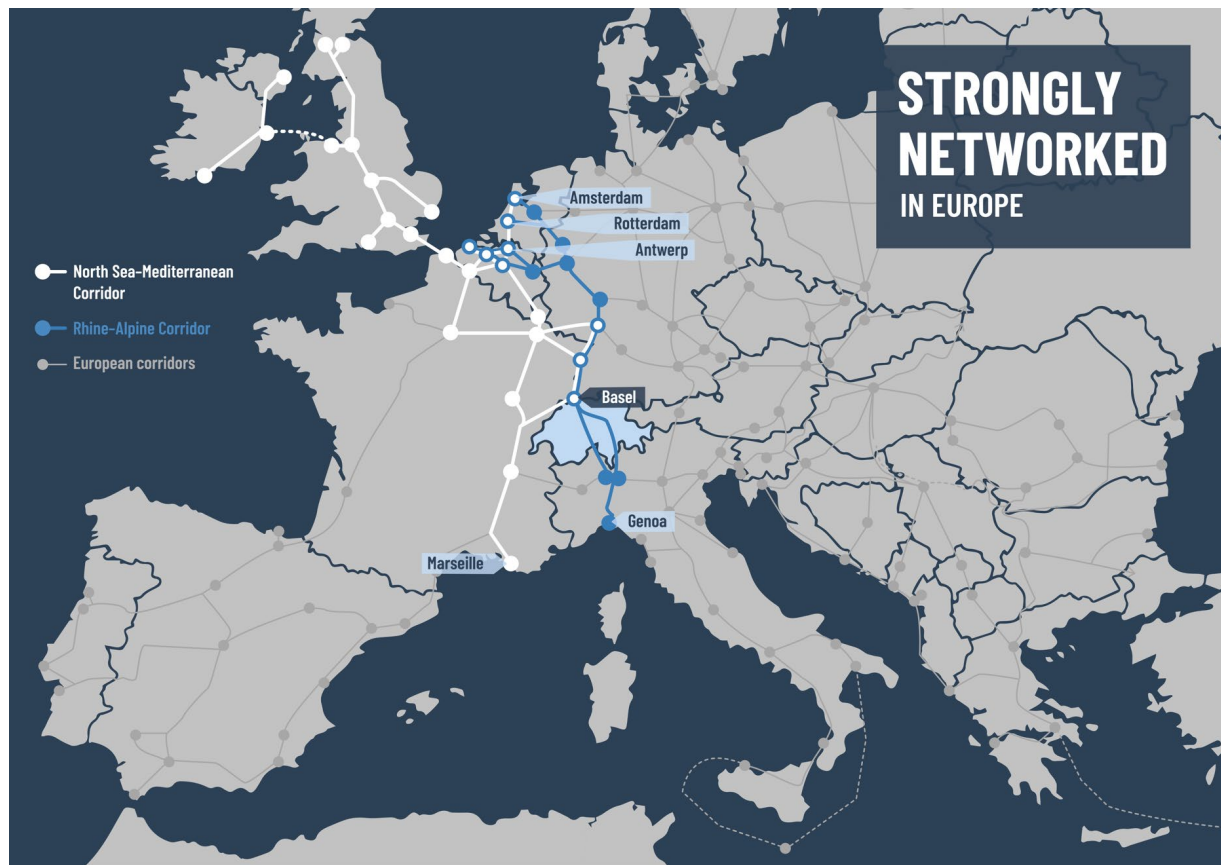


PARTICIPACIONES:



In the heart of Europe

Multimodality vital for Inland Ports



RPIS – RiverPorts Planning and Information System:

Develop RPIS into the standard Port Community System for inland ports in the European hinterland to gain efficiency for our sector.

WE CONNECT
 **INLAND**
WATERWAY
TRANSPORT

RHEINPORTS





Company

RheinPorts GmbH

- Schweizerische Rheinhäfen
- Duisburger Hafen AG
- Port de Mulhouse Rhine (CCI Alsace Eurometropole)

Platform

RPIS - River Ports Planning and Information System

- 1st Multi Port Community System for inland ports

Products

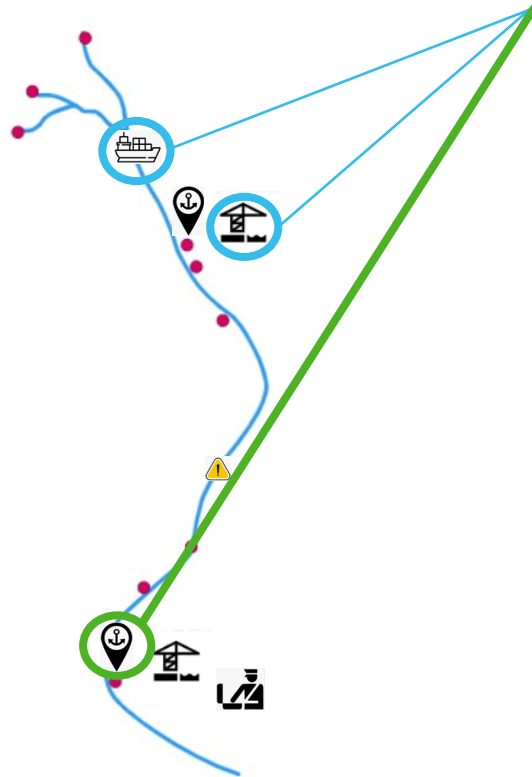
Services

- User identity & access management
- Interface management & data mapping
- Slot management for cargo barges (container & bulk)
- Slot planning, managing & invoicing river cruise
- Port monitor for inland ports
- Customs monitor for customs

For whome we offer which solution

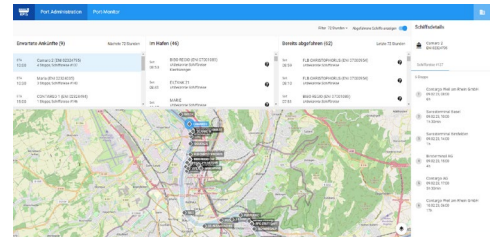


PORTS

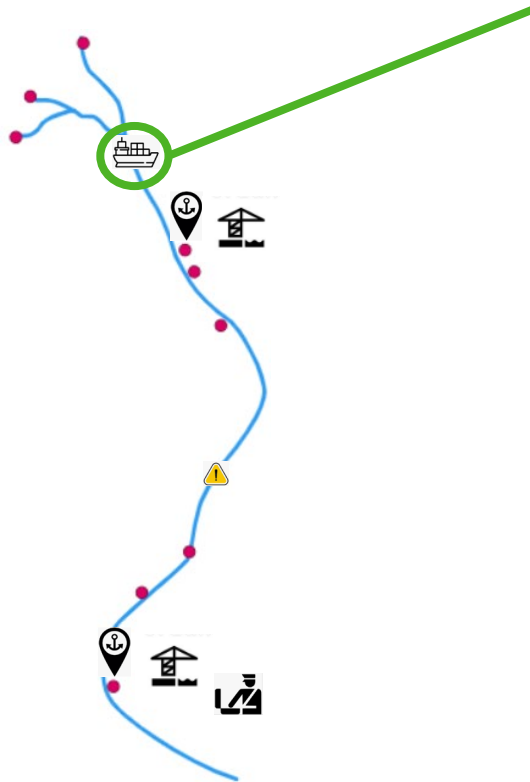


RPIS

- ✓ Preview of utilisation of port infrastructure & port services for up to 72h in advance
- ✓ Automated registration of incoming & outgoing vessels
- ✓ Automated generation of port fees & statistics
- ✓ Overview about activities in port
- ✓ Localisation of dangerous goods (in case of any incidents)

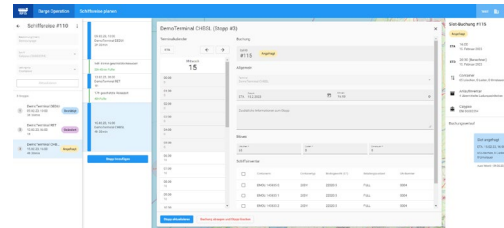


BARGE OPERATION

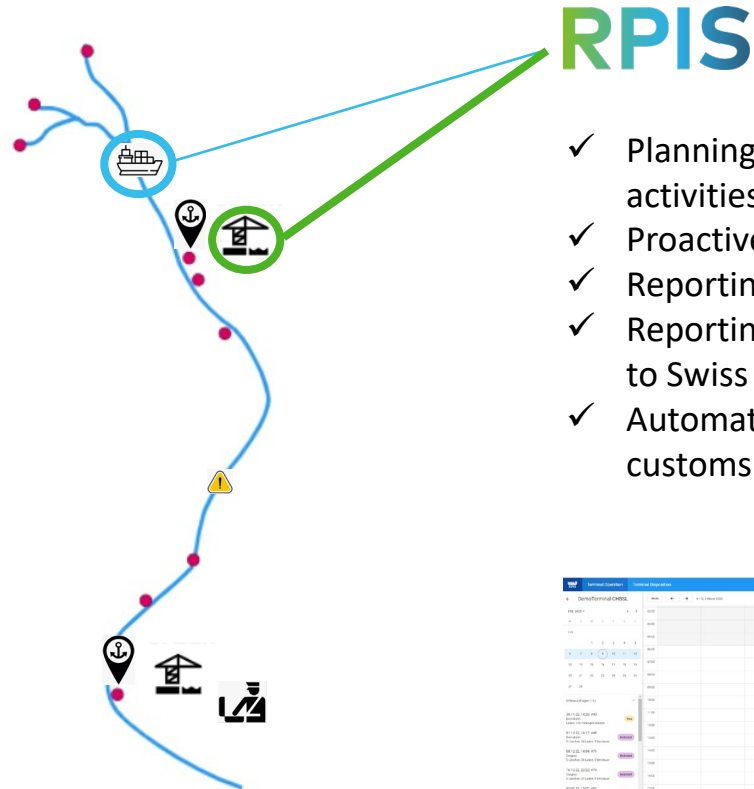


RPIS

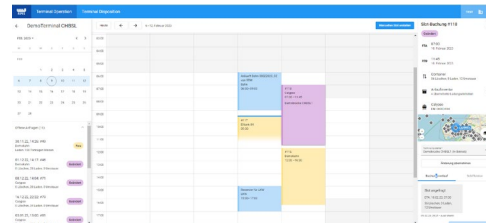
- ✓ Voyage & route planning
- ✓ Slot booking & reservation
- ✓ Visibility about capacity and utilisation of terminals
- ✓ Transmission & mapping of loading & discharge lists
- ✓ Visibility about handling progress on a terminal
- ✓ Proactive information about incidences & potential delays on the voyage (NtS)

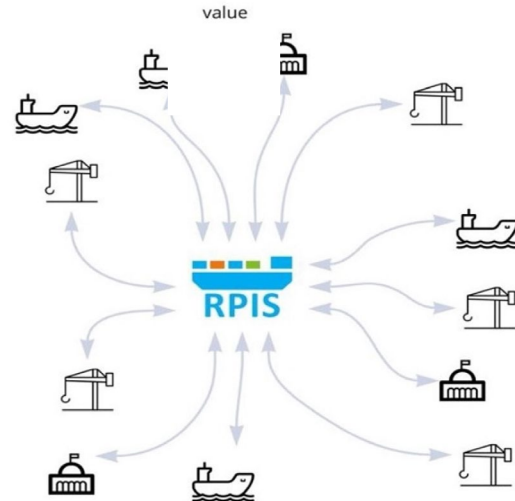
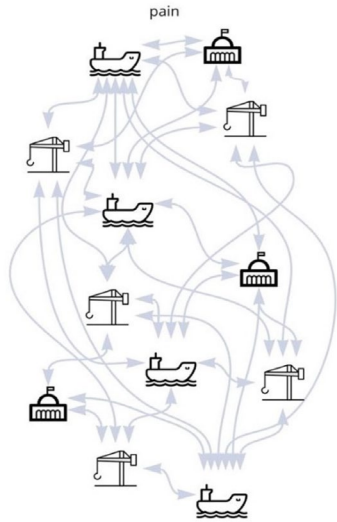


TERMINAL OPERATIONS



- ✓ Planning of terminal slots & activities across all modalities
- ✓ Proactive information about delays of barges
- ✓ Reporting of handlings to port authorities
- ✓ Reporting of cross border shipments to Swiss customs
- ✓ Automated information regarding potential customs inspection of the freight





- ✓ We are neutral, work cost-covering and not profit-oriented
- ✓ We use established technologies to connect all parties digitally for a better, easier integration to every inland waterway (Rhine, Donau, ...)
- ✓ We offer open interfaces with safe and automatic data transformation between all stakeholders
- ✓ We establish the new digital corridor in hinterland to seaports
- ✓ We support all inland ports in their digital transformation to become more resilient as an important part of the international supply chains
- ✓ We give inland navigation a voice

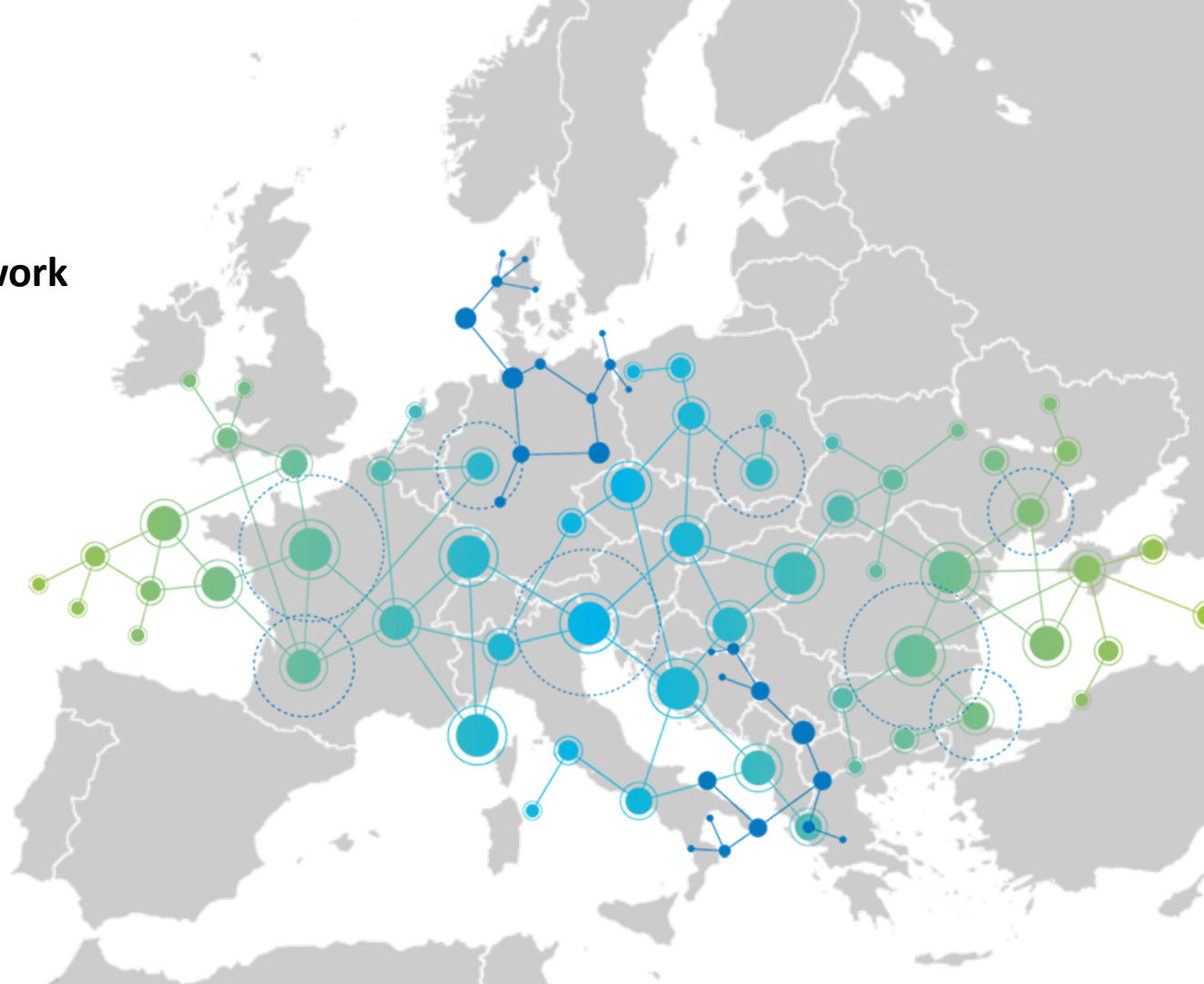


- ✓ Establishing the new digital corridor
- ✓ «One-Stop-Shop» for hinterland port services & supply
- ✓ CEERIS-Integration (automatic transmission of master and transaction data from RPIS to CEERIS)
- ✓ Seaport integration (e.g. ETAs of sea vessels; Gate-IN & OUT messages of sea terminals; Cargo opening windows for containers; Track & Trace; etc.)
- ✓ Integration of all modalities (barge, railway & truck)

Our goal:
We digitize inland navigation to integrate it more efficiently into logistic chains.

RPIS

**The biggest neutral network
of inland shipping.**





THANK YOU

 info@rheinports.eu

 www.rheinports.eu

 [/company/rheinports](https://www.linkedin.com/company/rheinports)

