

Updates on the interactive map of the Danube Commission

Working group on technical matters (WG TECH)
10-11 April 2024

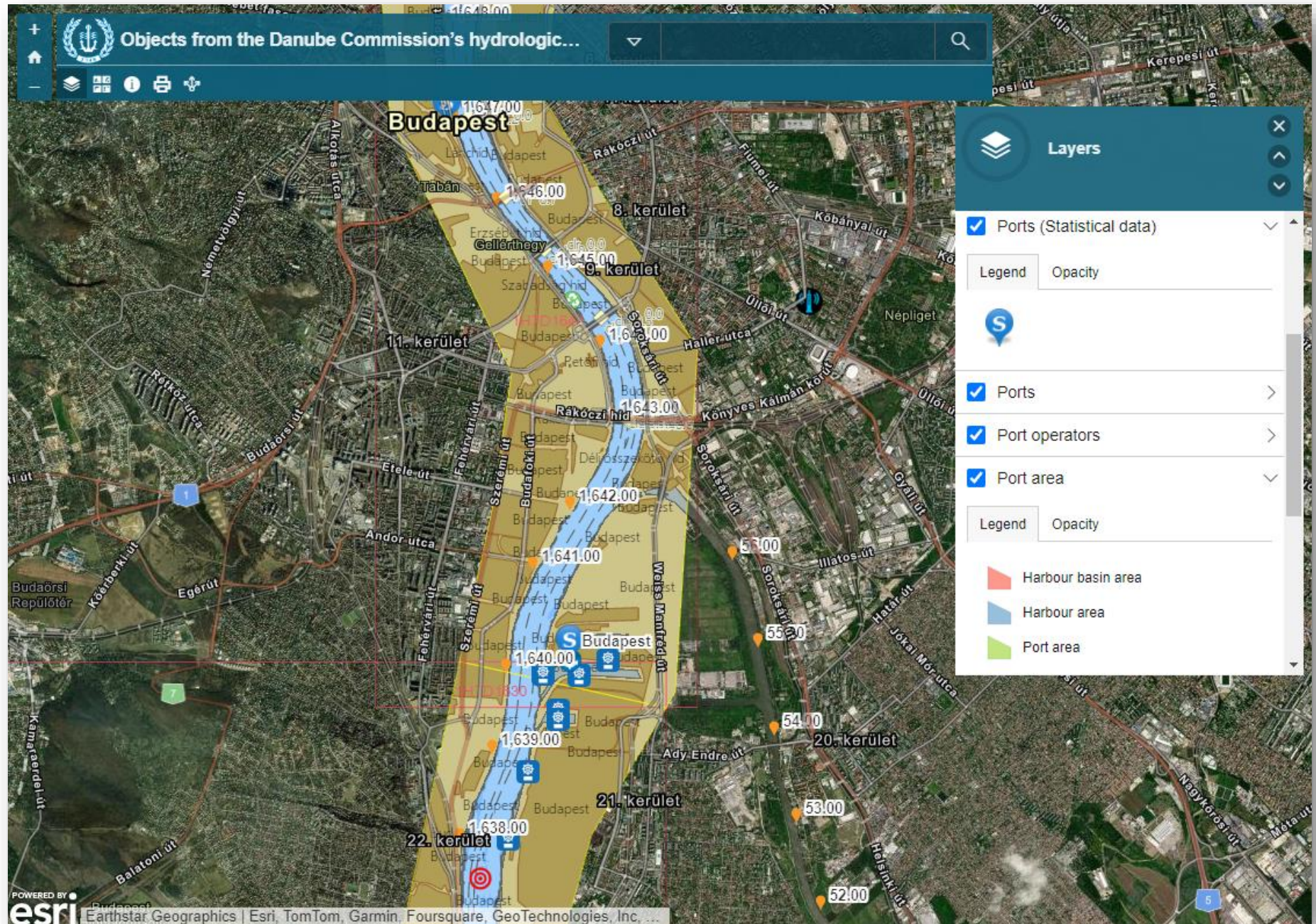


Recent updates on the interactive map:

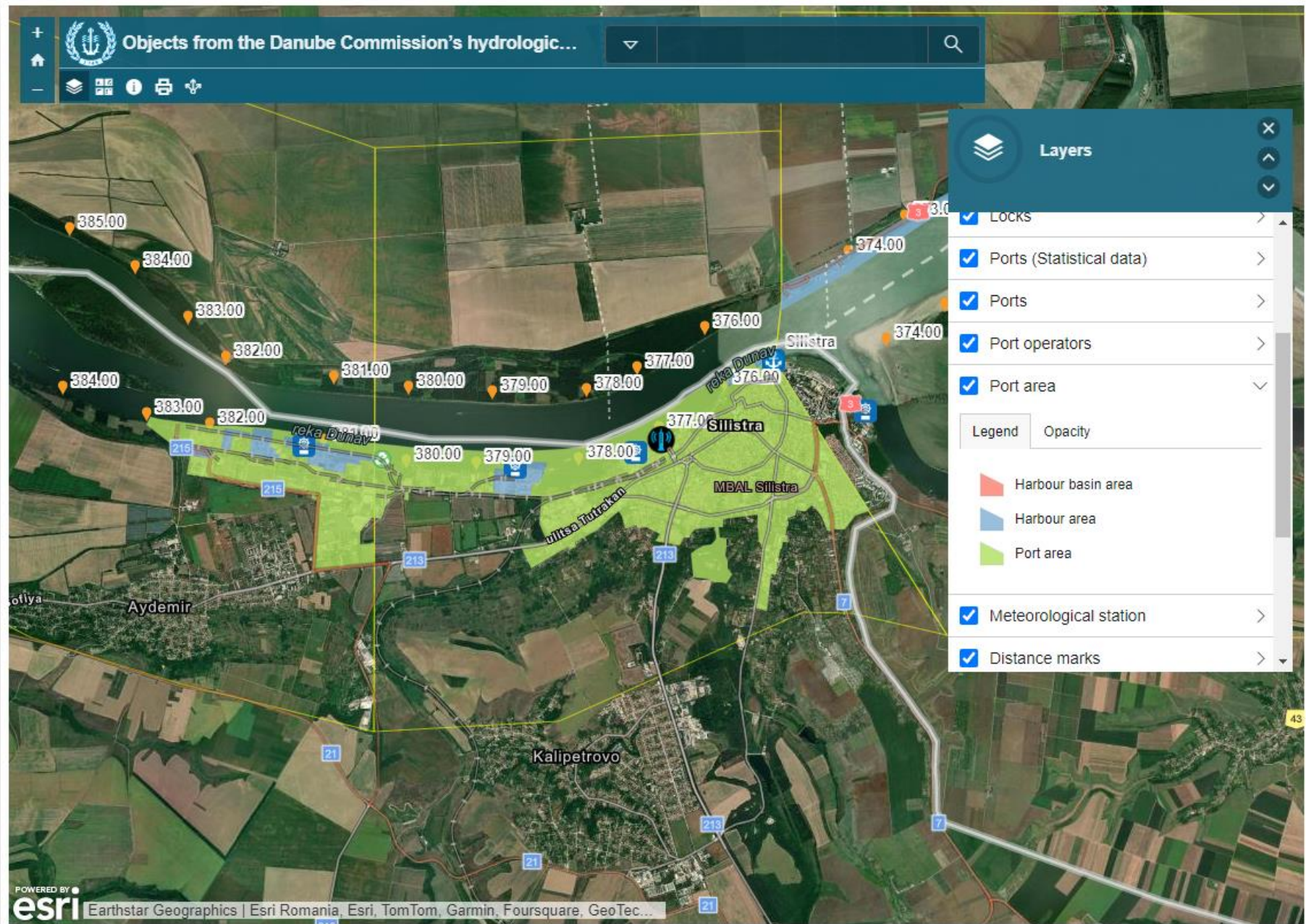
- Ports (Statistical data)
- Port area
- Fords: Links to detailed site plans updated

List of layers:

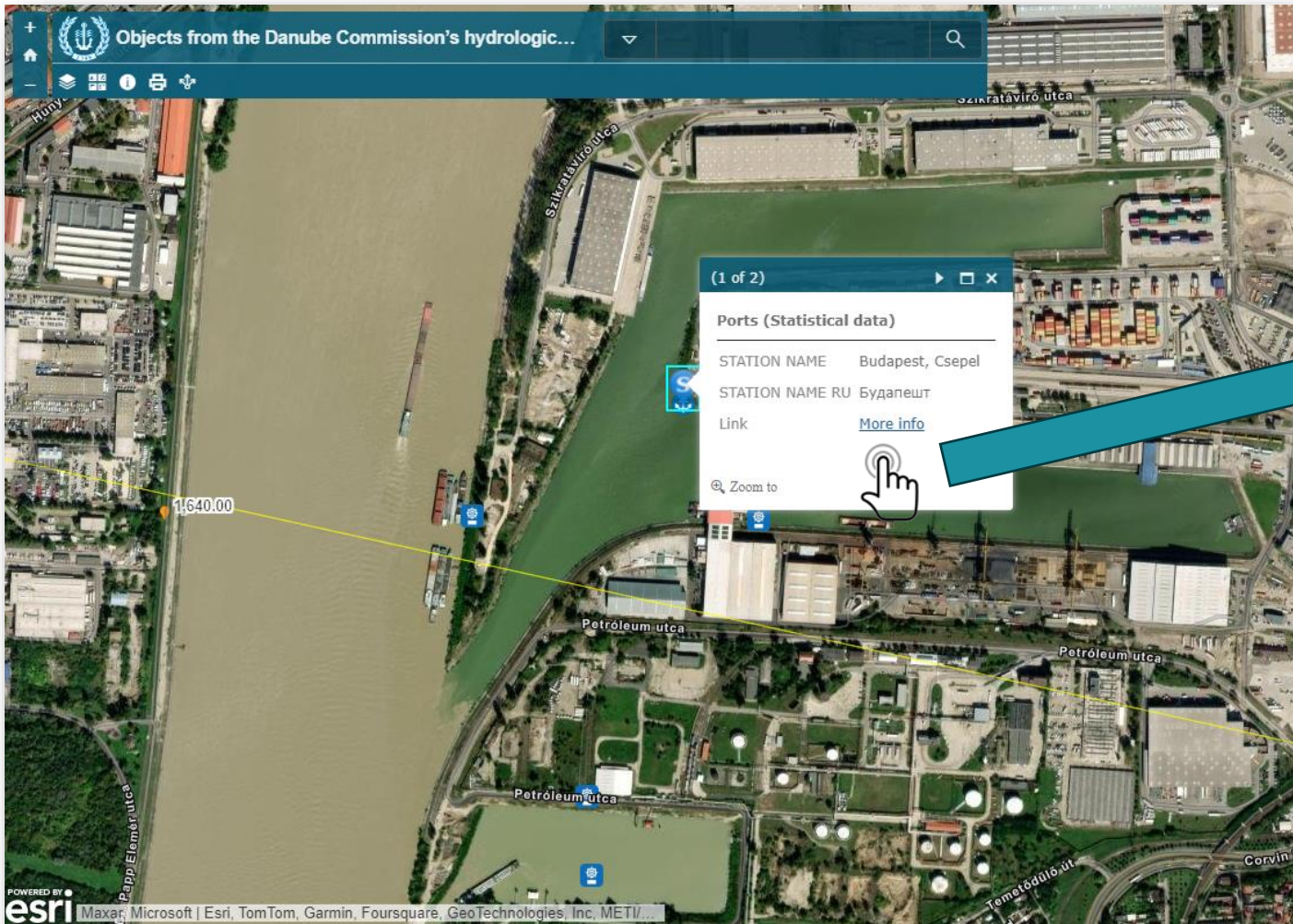
- Gauges
- Bridges
- Waste reception points
- Fords
- Radio stations
- Locks
- Ports (Statistical data)
- Ports
- Port operators
- Port area
- Meteorological station
- Distance marks
- ENC map coverages
- Critical sectors (Serbia)
- Danube river basin
- Maritime Chart Service, Inland ENC (IENC)
- UA Navigational Charts of Danube River



New feature on the map: Port area



New feature on the map: Ports (Statistical data)



Budapest, Csepel

The volume of transported goods (in thousand tonnes) between the chosen port(s) and its/their trading partner ports

Select the volumes to display:

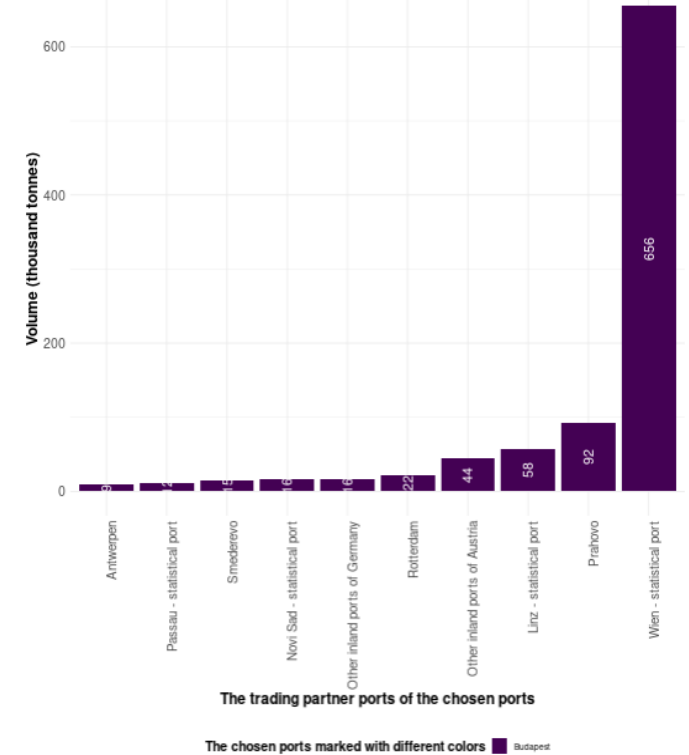
Display the volumes on the bars

Instead of only examining the originally selected port, you can also choose other Danube ports to become subjects of filtering/visualization:

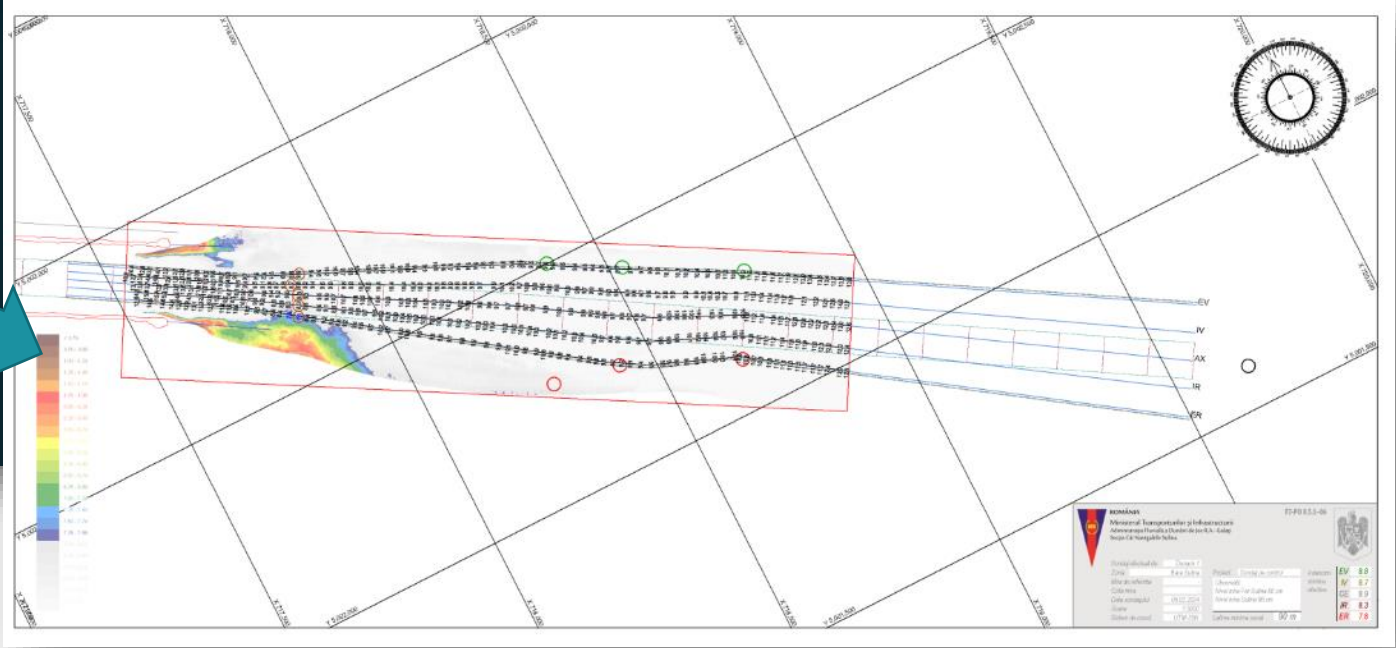
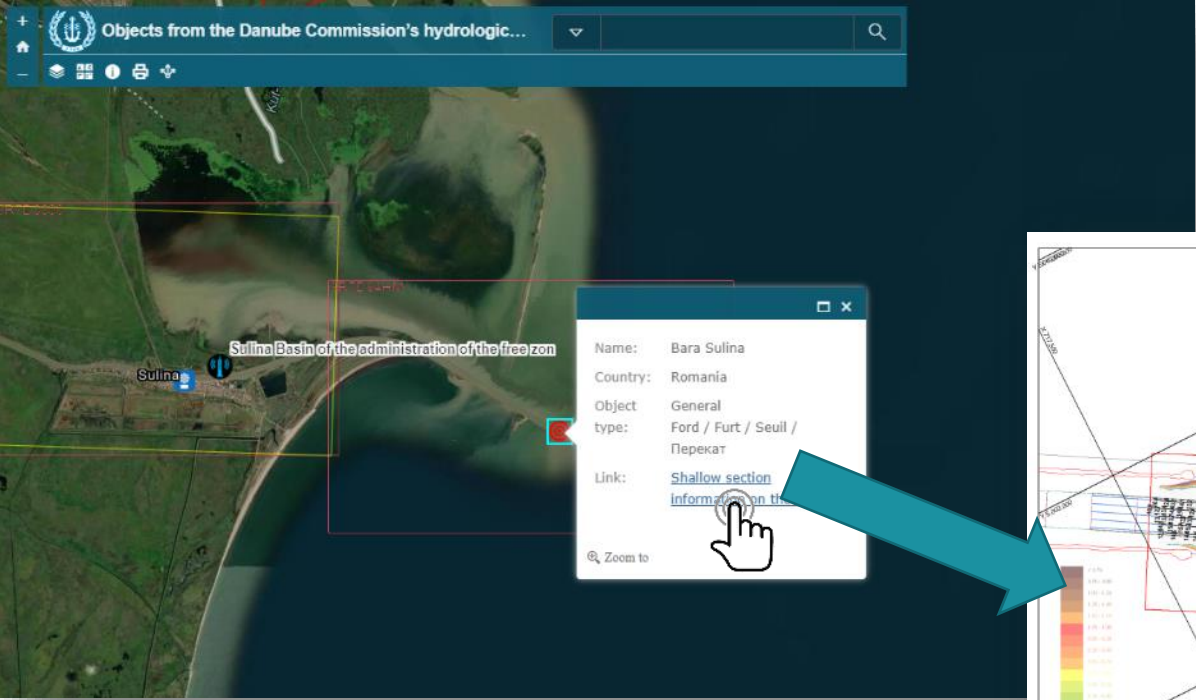
Select the direction - loaded/unloaded/total:

Select the year:

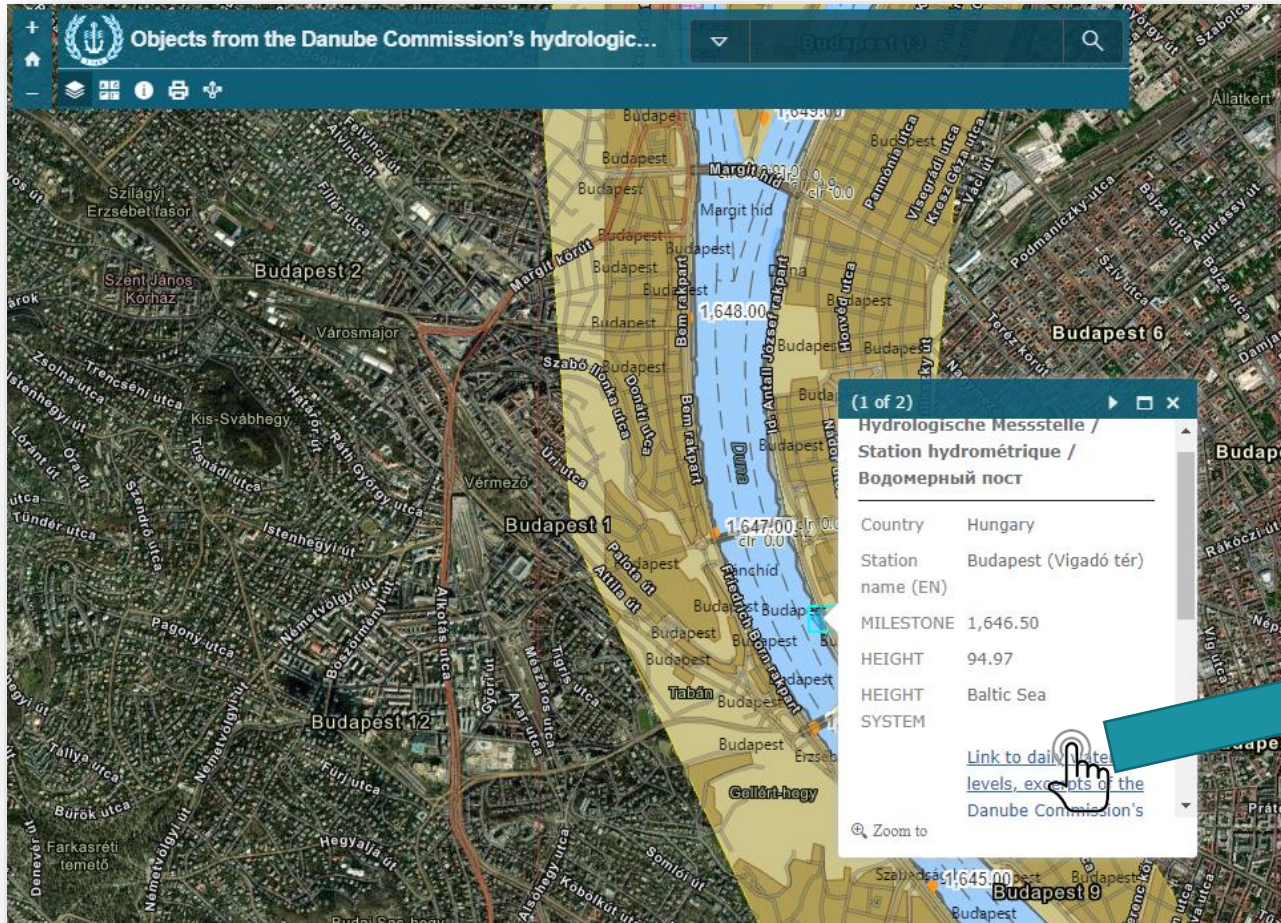
The aggregated volume of the transported goods - as determined by the current filters - is 940 thousand tonnes



Links to detailed site plans updated in the layer „Fords”



Links to daily water levels, excerpts of the Danube Commission's yearbooks added to the layer "Gauges" from 2007 - 2019

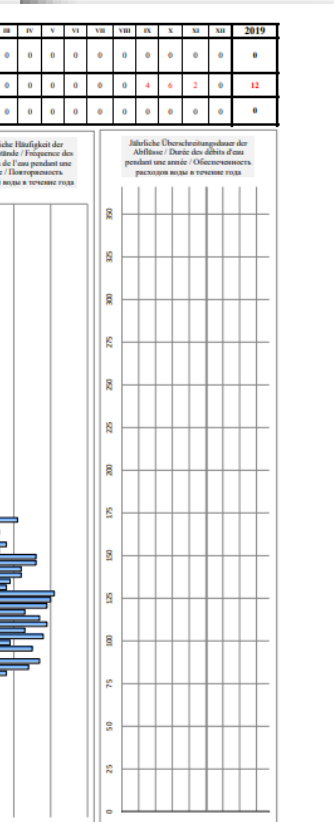
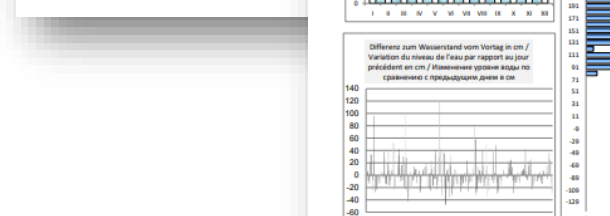
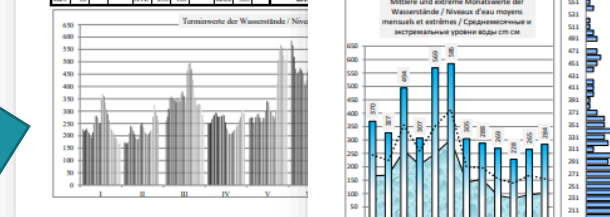


Ungarn / Hongrie / Венгрия

BUDAPEST VIGADÓ TÉR

Extremes und mittlere Wasserstände / Niveaux d'eau extrêmes et moyens / Экстремальные и средние уровни воды см	Extremes und mittlere Abflusswerte m ³ s / Débits d'eau extrêmes et moyens m ³ s / Экстремальные и средние расходы воды м ³ /с
MIN	MAX
17.08.1965	18.03.1940
52	300
06.11.1947	30.01.1933
809	2346
...	...

ISW BCY	I	II	III	IV	V	VI	VII	VIII	IX	X	XI	XII	2019
Tag mit Überschreitung des ISW / Jour où le ISW (ISW) a été dépassé / День, когда был превышен ИСВ (ИСВ)	0	0	0	0	0	0	0	0	0	0	0	0	0
Tag mit Überschreitung des ISW / Jour où le ISW (ISW) a été dépassé / День, когда был превышен ИСВ (ИСВ)	0	0	0	0	0	0	0	0	0	0	0	0	0



Functions of the interactive map



Turn on / turn off layers



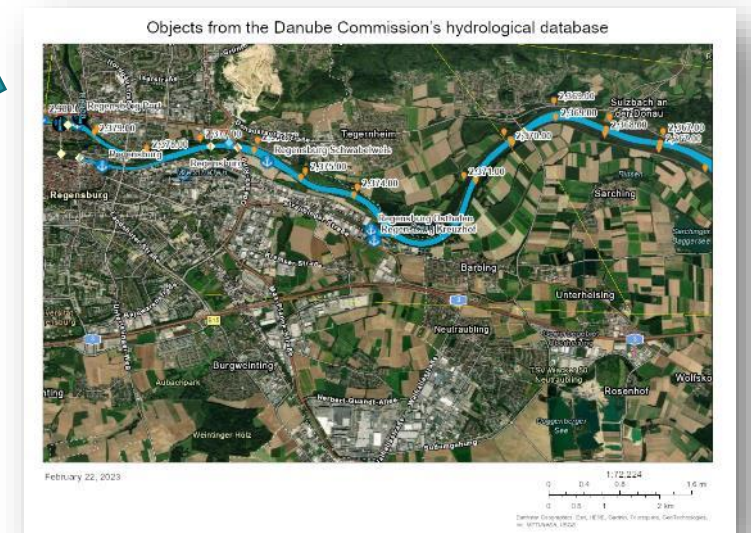
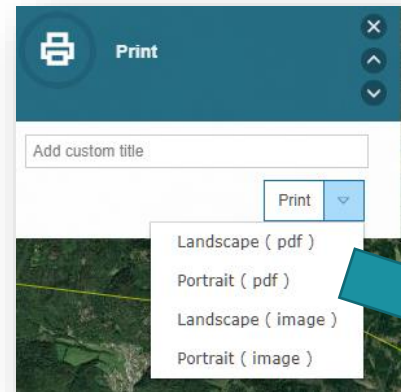
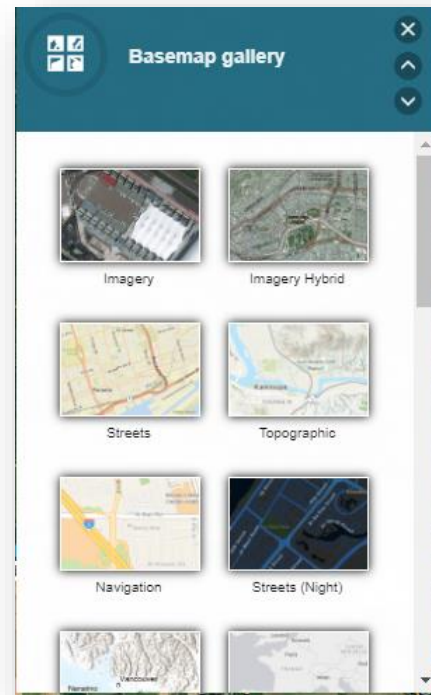
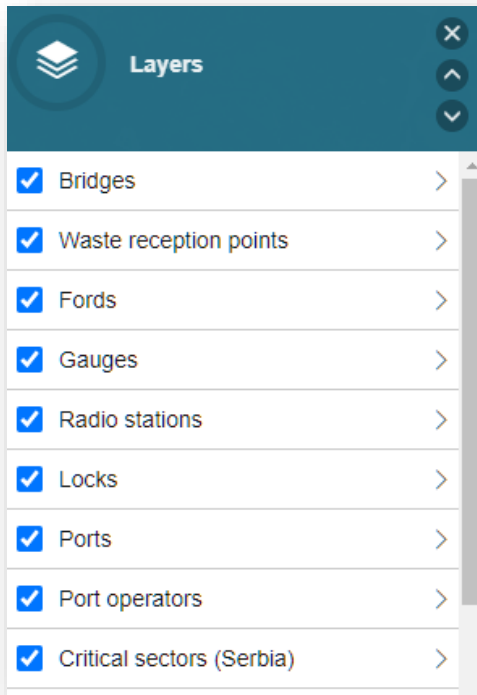
Change basemap



Print map to file



Search based on rkm, or ArcGIS World geocoding Service



Thank you for your attention!

