



# Activities planned by AFDJ Galati 2025 to ensure fairway conditions

*Budapest, 05 of March 2025  
River Administration of the Lower Danube Galati*

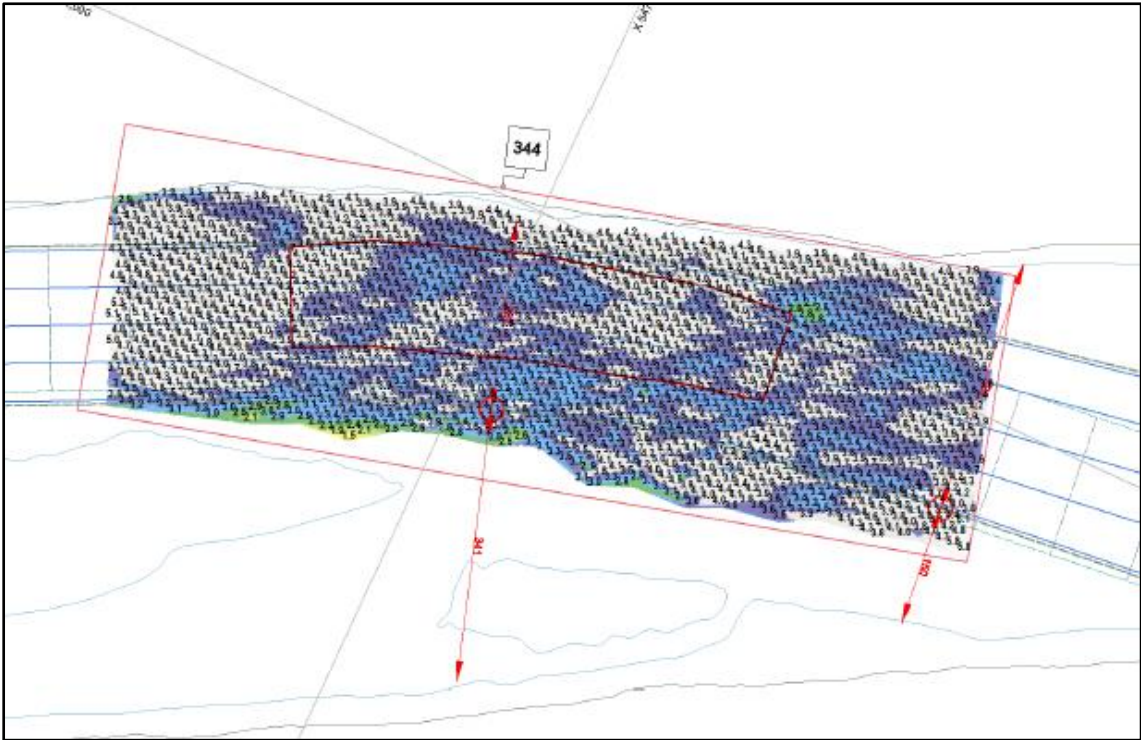
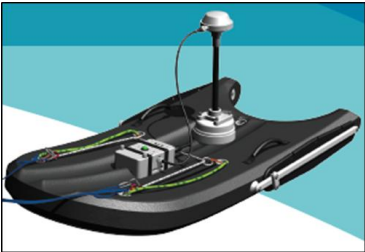
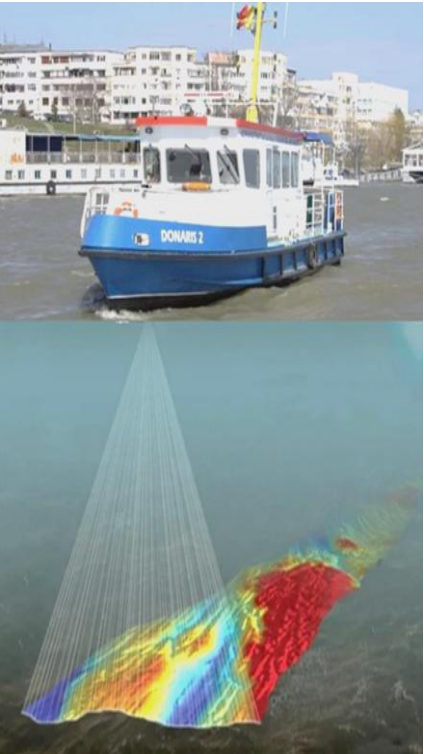
# Agenda

- *2025 – overview*
- *Monitoring – hydrological actions*
- *Monitoring – hydrographical actions*
- *Dredging works*
- *Publication results*



# Planned activities - 2025

- The waterway maintenance activities, for the Romanian Danube sector,
  - by bathymetric surveys, marking and dredging works.



# Hydrological conditions

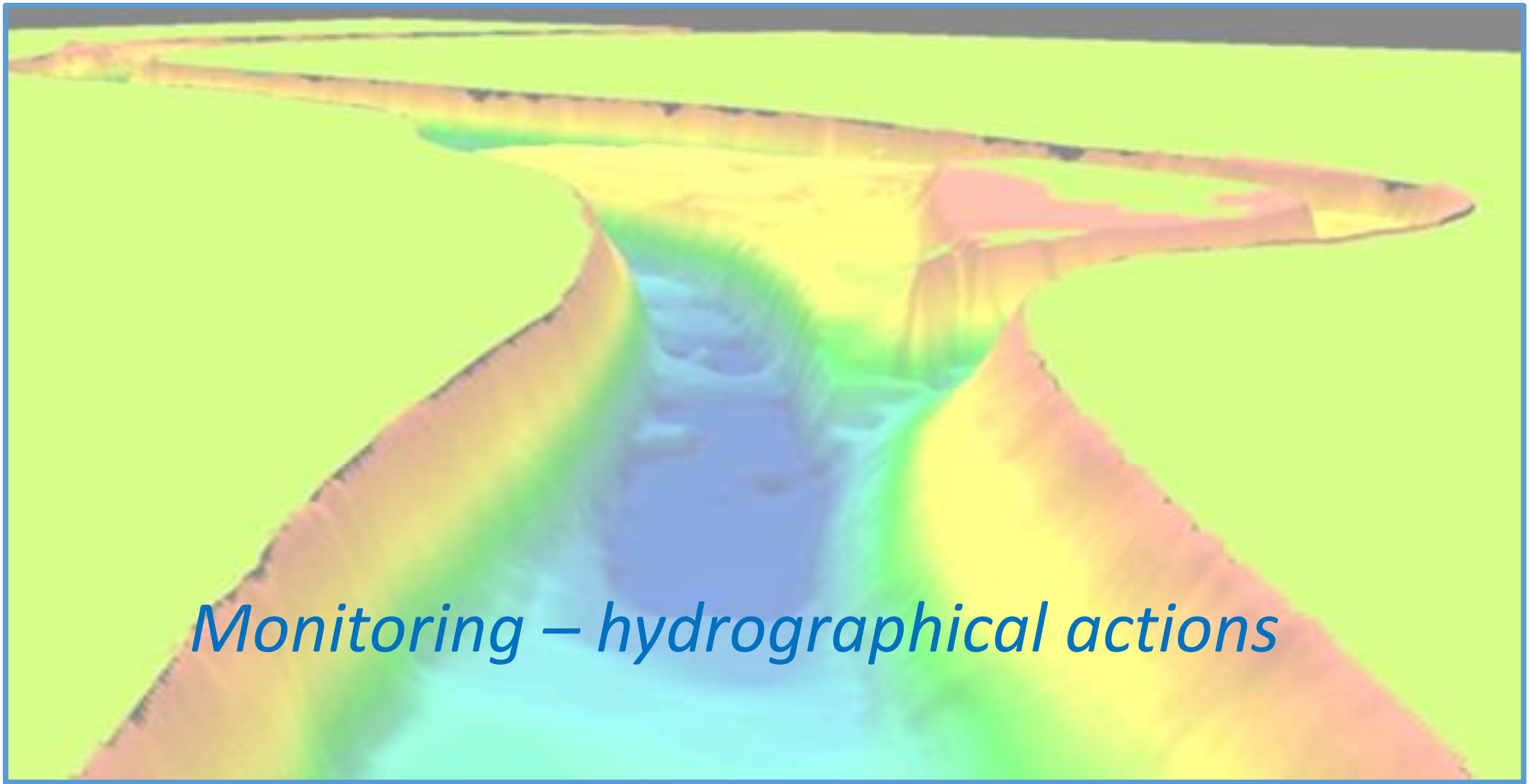
Regarding the next period, the forecasts show values above the annual average for March and April, favorable for navigation conditions.

(source : INHGA).

	m.a	March 2025	m.a	April 2025	m.a	May 2025
Qmax		5000		7000		8000
Qmed	6700	3800	7900	5300	7250	6400
Qmin		2500		3200		4000

In the table, in the column "m.a." it is present the average multiannual value of the flows corresponding to the month.

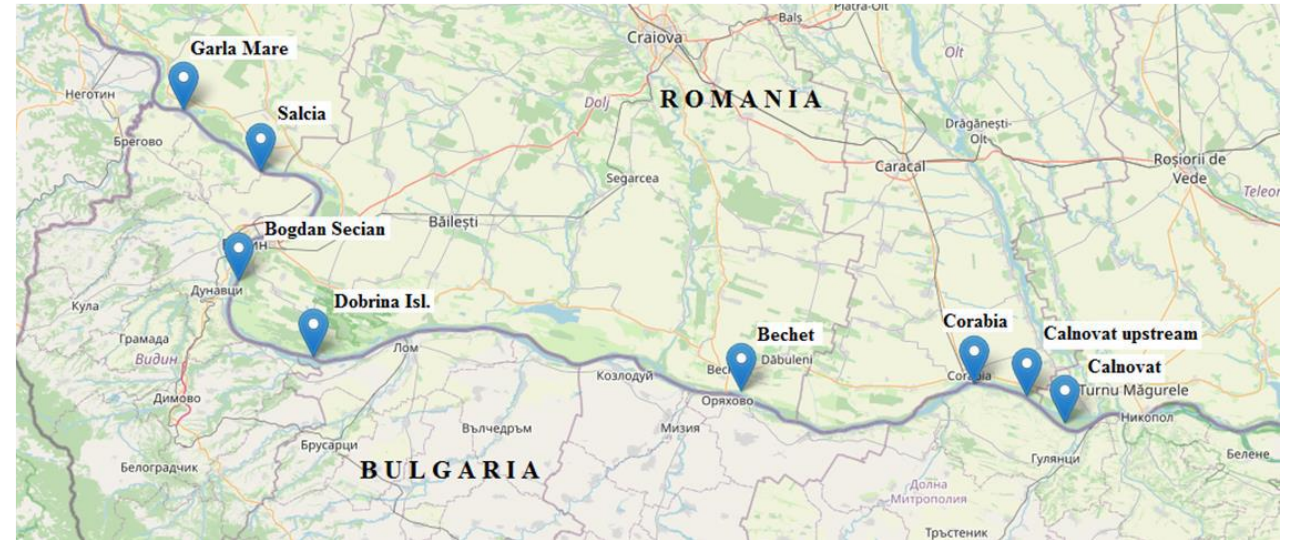
This long-term prognosis are updated by short-term prognosis, published daily for a period of 7 days



*Monitoring – hydrographical actions*

# Monitoring – hydrographical actions

- The waterway maintenance activities, for the RO – BG, Danube sector,



Nr.crt.	Punct critic	Mira referință	Amonte (km)	Aval (km)	Lungime (m)	Prioritate
1	Garla-Mare	Gruia	840	838	2000	4
2	Salcia	Cetate	824	818	6000	1
3	Bogdan-Secian	Calafat	785	783	2000	2
4	Dobrina	Calafat	763	760	3000	4
5	Bechet	Bechet	678	675	3000	1
6	Corabia	Corabia	633	626	7000	2
7	Calnovat am.	Corabia	617	614	3000	1
8	Calnovat	Tr. Mag.	613	610	3000	1
9	Garcov	Corabia	623	621	2000	3
<b>TOTAL:</b>					<b>30000</b>	

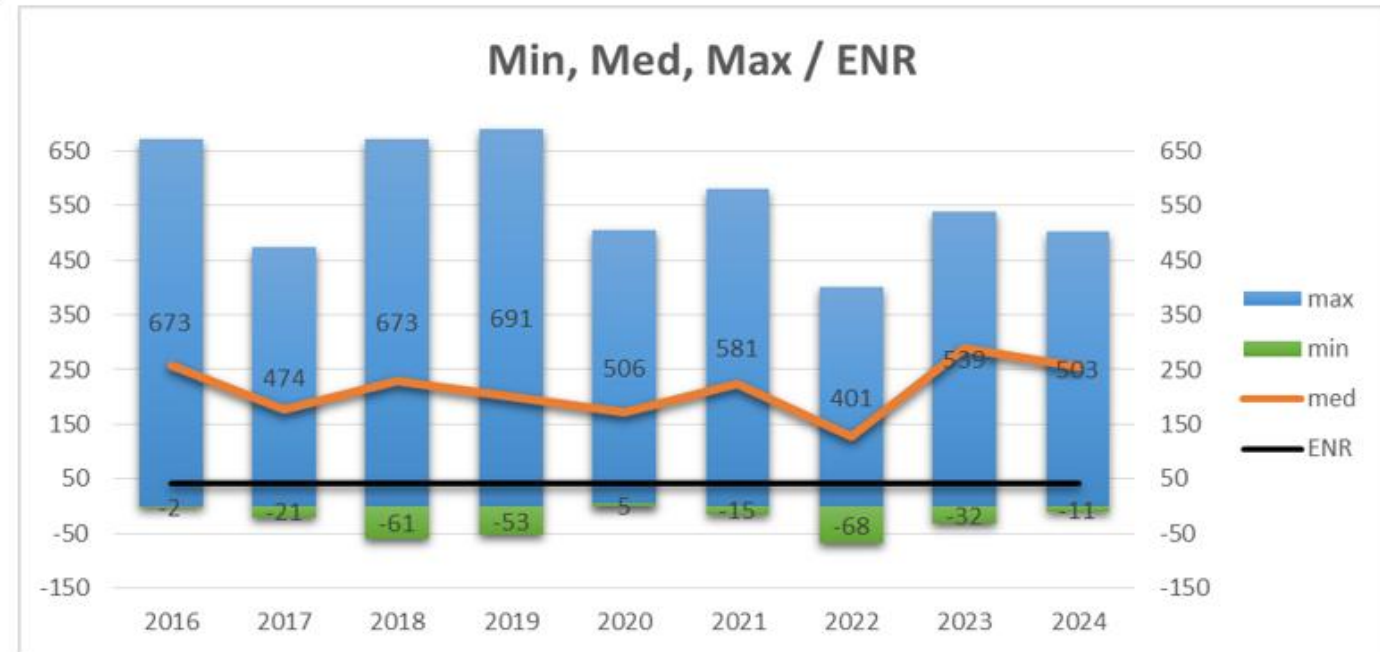
# Monitoring – hydrographical actions

- Bechet – critical sector, rkm 675 – 678

- **Water level – historical data**

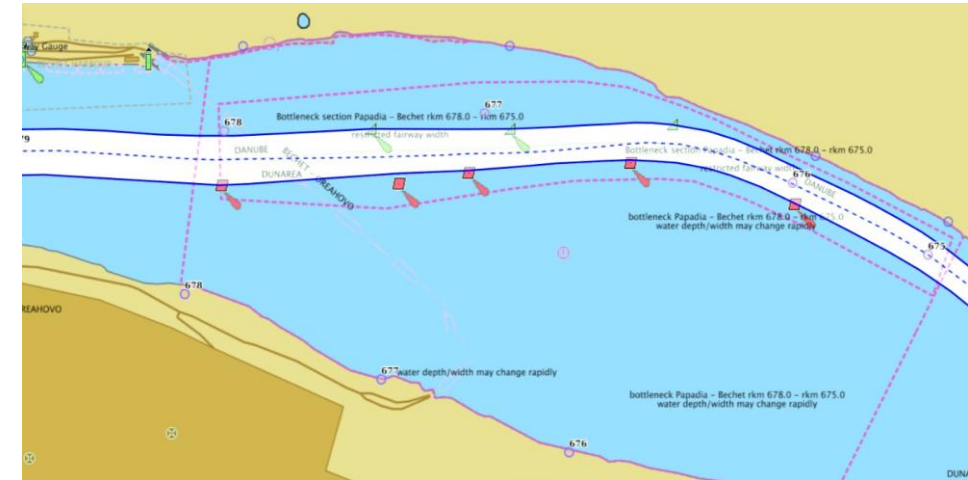
	2016	2017	2018	2019	2020	2021	2022	2023	2024
min	-2	-21	-61	-53	5	-15	-68	-32	-11
med	258	177	230	201	171	224	128	288	256
Max	673	474	673	691	506	581	401	539	503

- **Water level, min, max, average and LNWL**



# Monitoring – hydrographical actions

- Bechet – critical sector, rkm 675 – 678
  - **SB – monitoring survey – CONCORDIA EU 2019**
  - **MB – detailed survey – DONARIS 3 and ARES.**

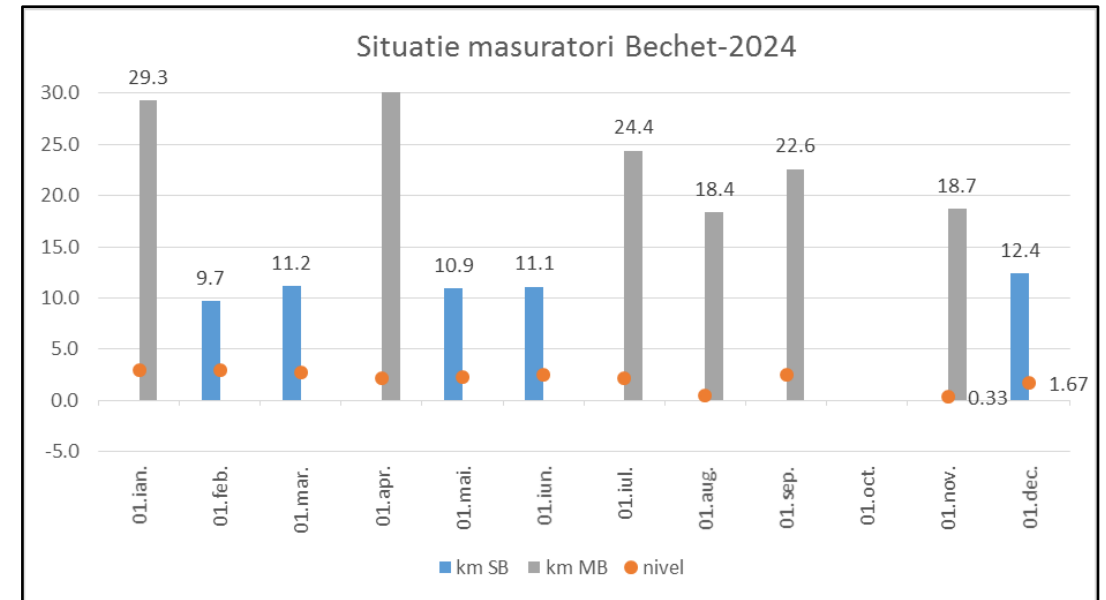
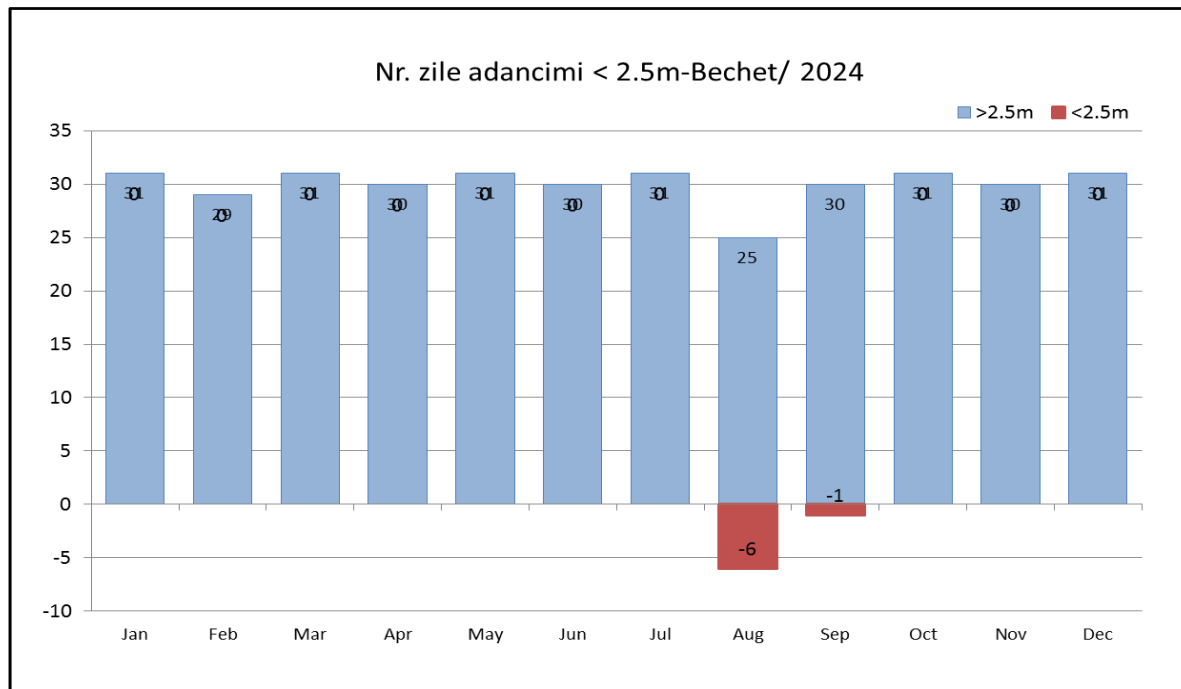


SB	2020	2021	2022	2023	2024	MEDIA
Nr. mäs.	8	3	9	4	5	5.8
Km mas.	84.4	36.9	110.5	47.6	55.3	66.9

MB	2020	2021	2022	2023	2024	MEDIA
Nr. mäs.	6	7	5	6	6	6
Km mas.	152.4	188.1	169.7	185.8	177.9	174.8

# Monitoring – hydrographical actions

- Bechet – critical sector, rkm 675 – 678
  - Status surveys, within 2024;
  - No of days, bellow 2,5 m;



## Single beam surveys

SB	min	max
No.	8	12
Km survey	89	138.4

## Multibeam surveys

MB	min	max
No.	3	6
Km survey	88.2	174.8

# Dredging activities - 2025



# Dredging activities - 2025

For dredging works, will be used:

- **AFDJ dredgers;**
  - Comana, Calafat, Cernavoda – River Danube;
  - Danube Dredger – Maritime Danube;
- **framework contract** – Rapide Dredger



# Dredging activities - 2025

For dredging works, will be used:

- **AFDJ dredgers;**
  - Comana, Calafat, Cernavoda – River Danube;
  - Danube Dredger – Maritime Danube;
- **framework contract** – Rapide Dredger
- **Dredging plan**
  - Maritime Danube, min. 300.000 – max. 800.000 cm;
  - River Danube (framework contract), min. 600.000 – max. 900.000 cm;
  - River Danube (AFDJ dredgers), min. 200.000 – max. 470.000 cm.



# Fairway maintenance-2025

In order to ensure the navigation conditions for 2025 year, there are set a series of measures related to maintenance works.

- *Execution control surveys*
- *Execution detailed measurements*
- *Prioritize the areas where interventions are needed;*
- *Perform regularly marking trips ;*
- *Supplementing the number of signs during critical periods;*
- *Narrowing the fairway to ensure depths over 2.5m in fairway;*
- *Execution of dredging works to improve navigation depth-recourse to framework contracts for rapid interventions;*
- *Starting dredging works early, before the low water period;*

# FAIRway Danube II – GNS status 2024-2025

- Operational expenditures for conducted activities 2024 and budget needs 2025 (AFDJ)

Need area	Operational expenditures 2024	Required operational budget 2025	Secured operational budget 2025	Remaining financing gap 2025
Minimum fairway parameters (width/depth) – maintenance dredging	7.135.000	7.530.000	7.530.000	-
Surveying of the riverbed	1.170.000	1.225.000	1.225.000	-
Water level gauges				
Marking of the fairway	6.000.000	6.120.000	6.120.000	-
Availability of locks / lock chambers				
Information on water levels and forecasts				
Information on fairway depths				
Information on marking plans				
Meteorological information				
Other needs				
<b>Sum (Euro)</b>	<b>14.305.000</b>	<b>14.875.000</b>	<b>14.875.000</b>	<b>0</b>

# Publication results - 2024

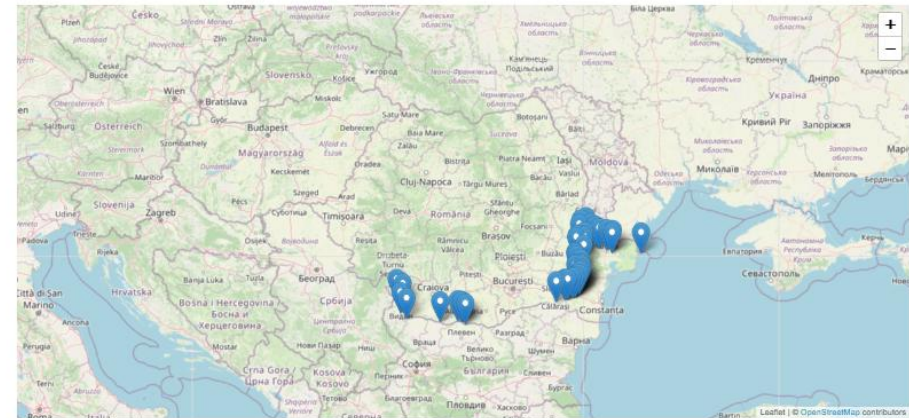
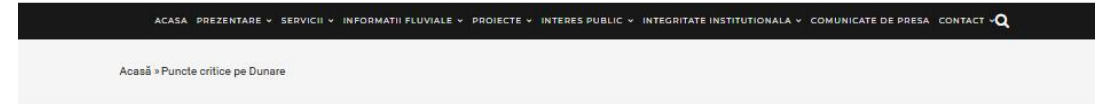


R.A. Administrația Fluvială a Dunării de Jos Galați

All information available on AFDJ website ([www.afdj.ro](http://www.afdj.ro)) :

- Daily water level;
- Forecast, 7 days;
- Hydrographical survey results (daily available depths in critical sectors);
- IENC, available, for free;

As well, on FIS Portal and NtS, if necessary.



Numele secțiunii critice	Data măsurătorii	De la km	Pana la km	Schita
Garla Mare	23/02/2025	838,00	840,00	Schita Garla Mare
Salcia	22/02/2025	823,00	820,00	Schita Salcia
Bogdan Secian	21/02/2025	785,00	783,00	Schita Bogdan Secian
Ostrov Dobrina	20/02/2025	764,00	762,00	Schita Ostrov Dobrina
Papadia-Bechet	28/02/2025	678,00	675,00	Schita Papadia-Bechet
Corabia	18/01/2025	633,00	626,00	Schita Corabia



# Galati Lower Danube River Administration, ROMANIA

AFDJ Galati team

Claudiu Dutu – [claudiu.dutu@afdj.ro](mailto:claudiu.dutu@afdj.ro)



*Thank you for your attention!*

