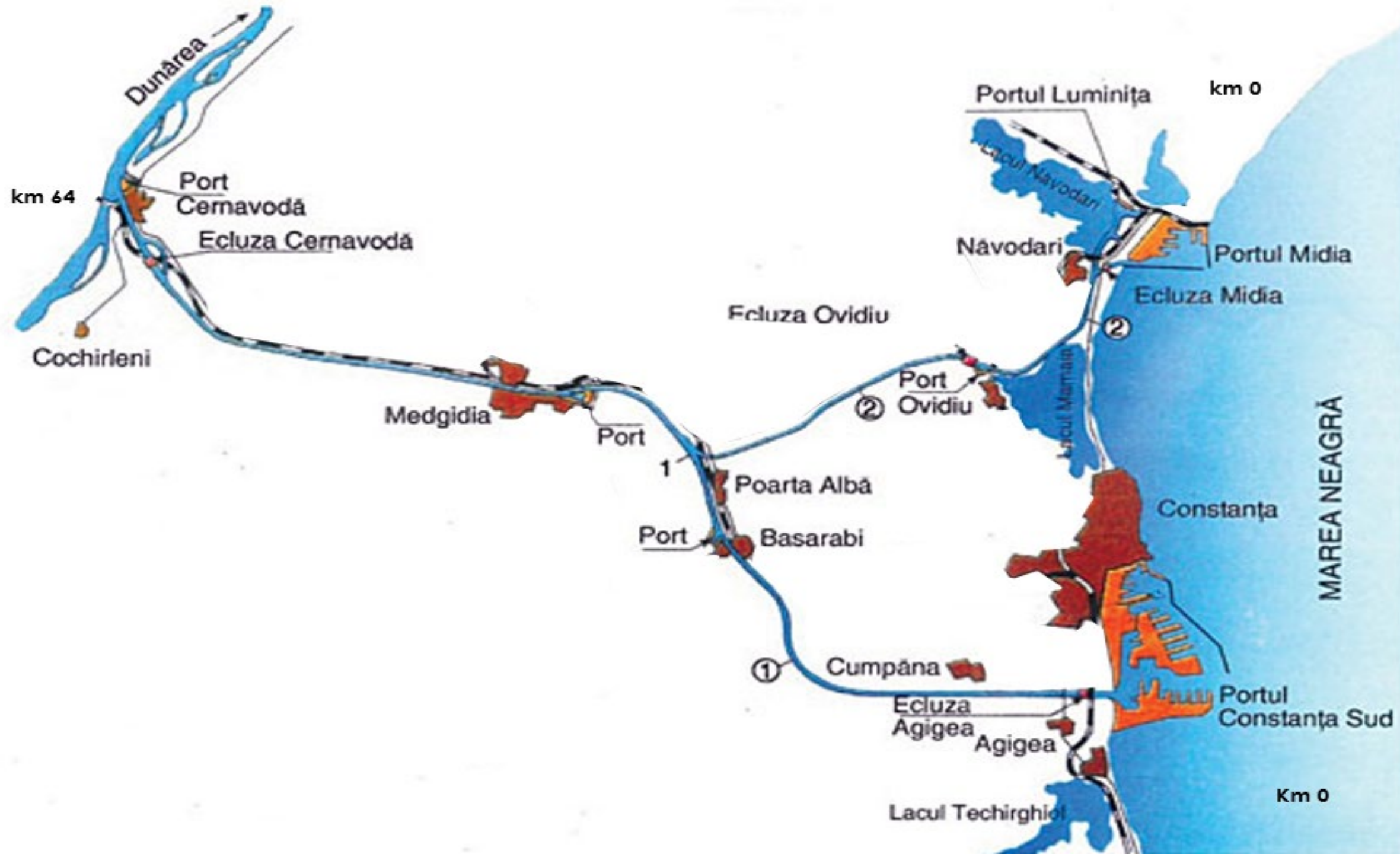


DANUBE-BLACK SEA CANAL AND POARTA ALBA-MIDIA CANAL

Maintenance activities foreseen in 2025



Expert Meeting on hydraulic engineering
05.03.2025

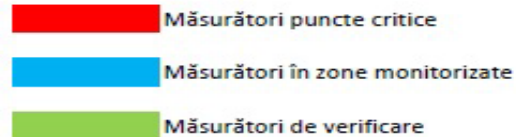


► SURVEYING ACTIVITIES 2025

COMPANIA NAȚIONALĂ "ADMINISTRAȚIA CANALELOR NAVIGABILE" SA

PROGRAM MASURATORI HIDROGRAFICE PE ANUL 2025

Nr. crt.	Locatie	Ianuarie	Februarie	Martie	Aprilie	Mai	Iunie	Iulie	August	Septembrie	Octombrie	Noiembrie	Decembrie
1	Km 50+500 ÷ 52+000, CDMN												
2	Cernavodă, Km 63+000 ÷ 65+000, CDMN												
3	Cernavodă - Canal de Derivație												
4	Limite șenal navigabil CDMN+CPAMN												
5	Km 6+000 ÷ 8+000, CDMN												
6	Cernavodă, Km 60+300 ÷ 65+000, CDMN												
7	Port Medgidia, Km 37+000 ÷ 38+000, CDMN												
8	Port Luminița, Km 3+500 ÷ 4+500												
9	Năvodari, Km 0+000 ÷ 2+000, CPAMN												
10	Km 43+000 ÷ 46+000 CDMN												
11	Cernavodă, Km 63+000 ÷ 65+000, CDMN												
12	Km 34+000 ÷ 38+000, CDMN												
13	Km 28+000 ÷ 29+000, CDMN												
14	Km 23+000 ÷ 25+000, CDMN												
15	Km 16+000 ÷ 19+000, CDMN												
16	Cernavodă, Km 63+000 ÷ 65+000, CDMN												
17	Ax șenal navigabil CDMN+CPAMN												
18	Port Basarabi, Km 24+000 ÷ 25+000, CDMN												
19	Km 13+000 ÷ 17+400, CPAMN												
20	Km 0+000 ÷ 1+500, CDMN												
21	Km 2+000 ÷ 4+000, CDMN												
22	Cernavodă, Km 63+000 ÷ 65+000, CDMN												

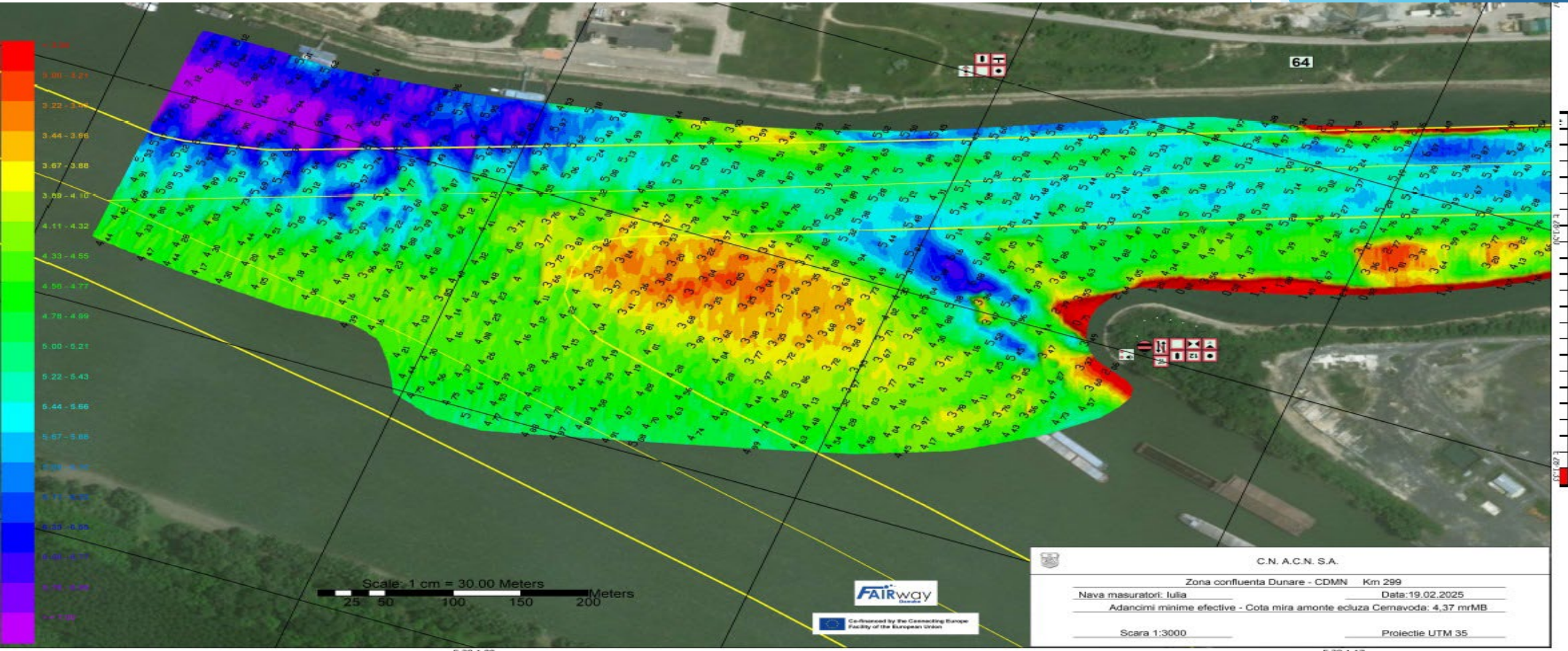


-Confluence of Danube river -Danube Black Sea canal- 5 times/year
 -Surveying tours- 2/year (limits of the fairway/axis of the fairway)

ESTIMATED DREDGING VOLUMES :

Stretch Danube river - Cernavoda locks - estimated 700.000 mc(km 65+000-km 60+300) of which

Confluence Danube river -DBSC- estimated 200.000 mc (km 65+000-km 63+000)



Operational expenditures foreseen in 2025

Need area	Required operational budget 2025*
Minimum fairway parameters (width/depth) - maintenance dredging	800.000
Surveying of the riverbed	13.688
Water level gauges	10.000
Marking of the fairway	7.200
Availability of locks / lock chambers	8.339.200
Information on water levels and forecasts	-
Information on fairway depths	-
Information on marking plans	-
Meteorological information	-
Other needs	227.200

*other needs -RoRIS-ACN , water quality management system

Planned activities in 2025

According with GNS Report- FAIRway Danube II :

Support acquisition of up-to-date sounding equipment, in particular sensors (incl. possibly drones), to raise the quality of surveying data

- Contracting of one new surveying vessel with MB sensor

Support acquisition of additional automatic gauging stations, especially for critical sections

- Acquisition procedure and contracting for upgrade two gauging stations on the DBSC

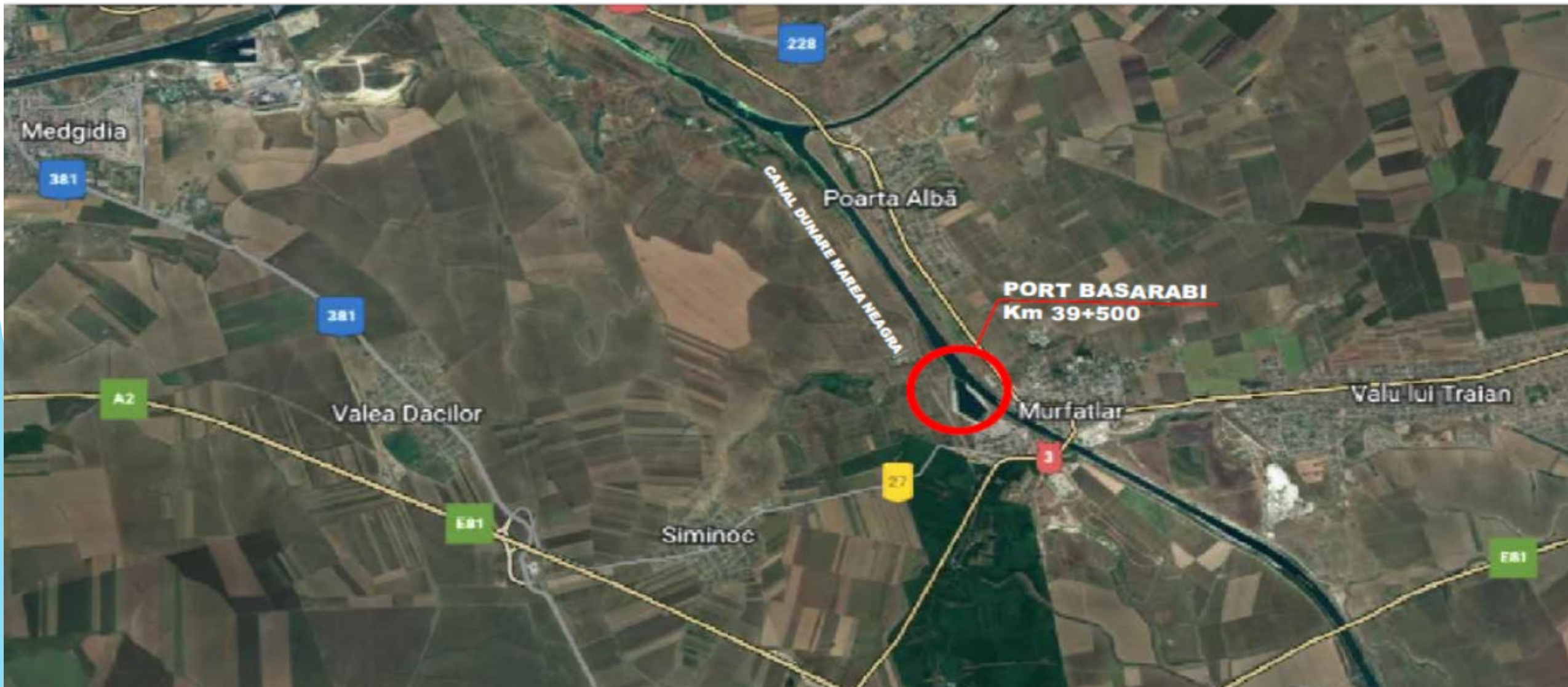
Support acquisition of sensors measuring turbidity, sedimentation and chemical components of the water

- Acquisition procedure and contracting for 3 buoys with fixed sensors

Upgrade of mooring infrastructure in Romania (Port Basarabi, right bank, Danube-Black Sea Canal)

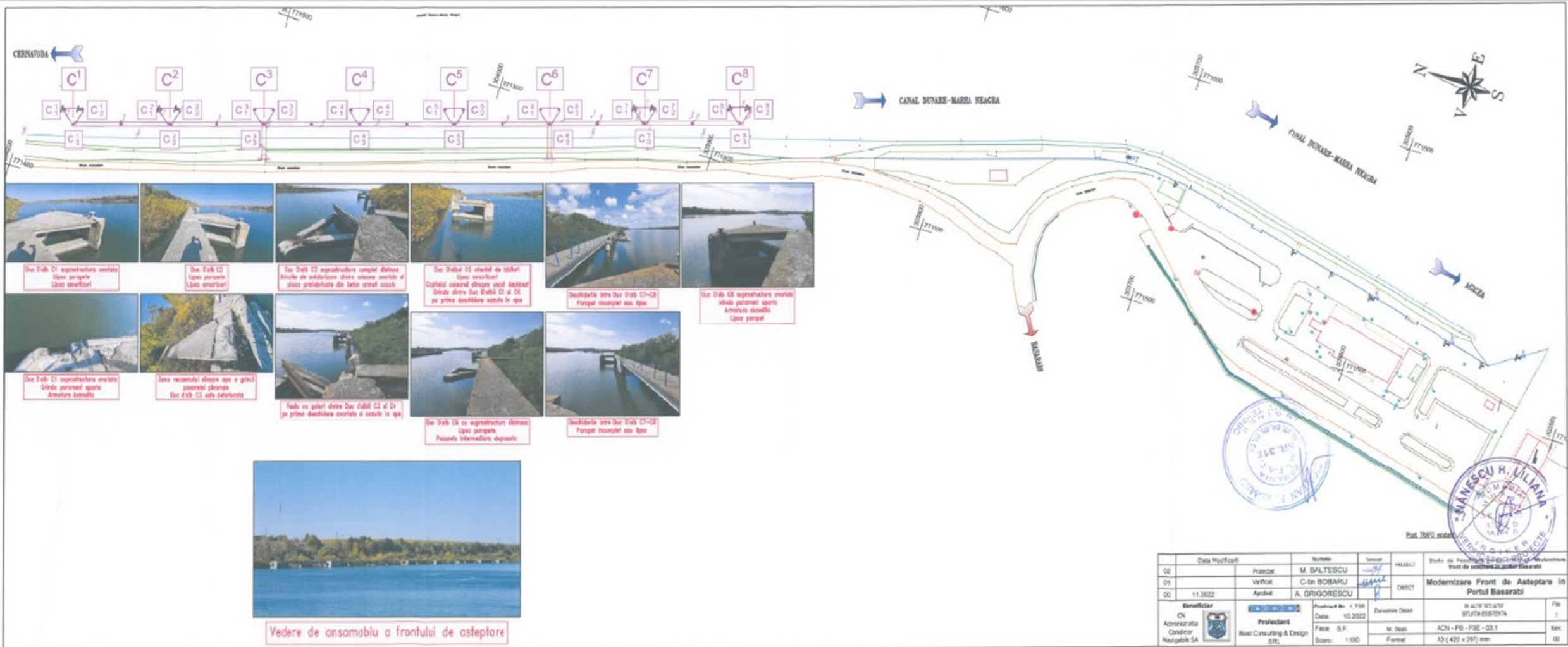
PLAN DE AMPLASAMENT - PORT BASARABI

SCARA 1: 50.000

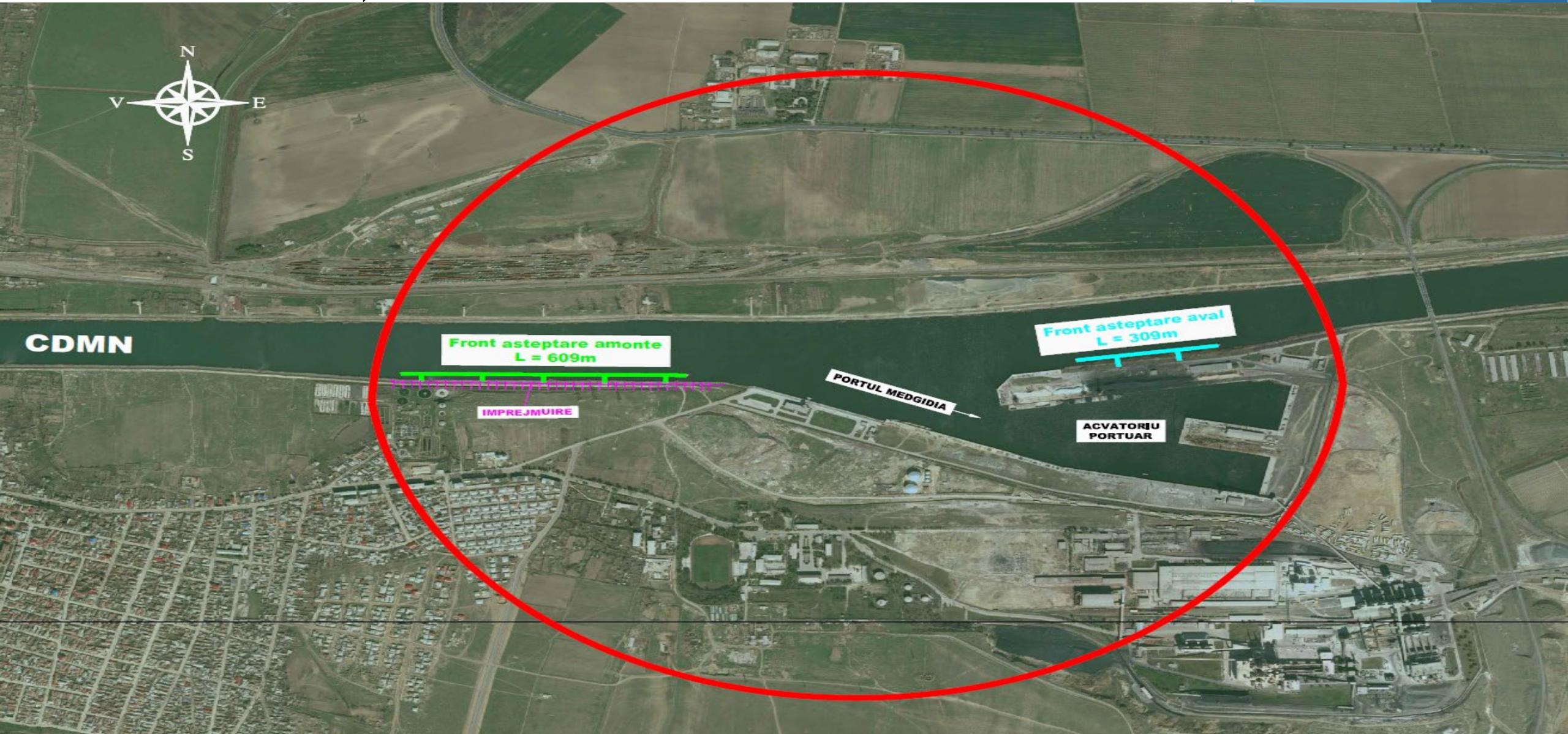


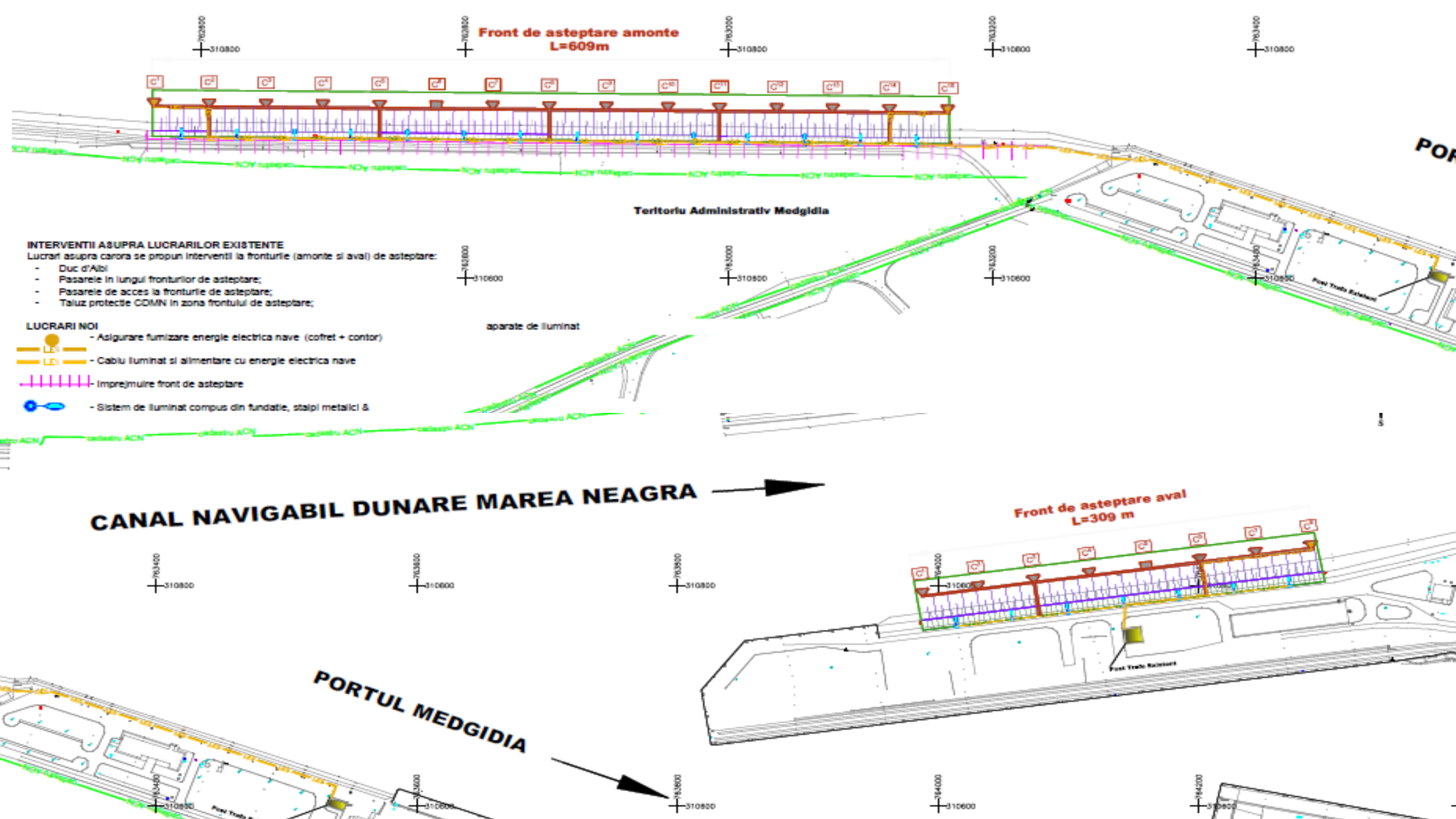
Upgrade of mooring infrastructure in Romania (Port Basarabi, right bank, Danube-Black Sea Canal)

Current status



Upgrade of mooring infrastructure in Romania (Port Medgidia; right bank, Danube - Black Sea Canal)





**Front de asteptare amonte
L=609m**

Teritoriu Administrativ Medgidia

**Front de asteptare aval
L=309 m**

INTERVENTII ASUPRA LUCRARILOR EXISTENTE
 Lucrari asupra carora se propun interventii la fronturile (amonte si aval) de asteptare:

- Duc d'Aibi
- Pasarele in lungul fronturilor de asteptare;
- Pasarele de acces la fronturile de asteptare;
- Taluz protectie CDMN in zona frontului de asteptare;

LUCRARI NOI

- Asigurare furnizare energie electrica nave (cofret + contor)
- Cablu iluminat si alimentare cu energie electrica nave
- Imprejmuire front de asteptare
- Sistem de iluminat compus din fundatie, stalpi metalici &

aparate de iluminat

CANAL NAVIGABIL DUNARE MAREA NEAGRA →

PORTUL MEDGIDIA →

PO

5

THANK YOU FOR YOUR ATTENTION !

Moren ABDURAFI
mabdurafi@acn.ro

