

DANUBE COMMISSION

Expert Meeting on Hydrotechnical Issues

March 5, 2025, Budapest

The Directorate for Inland Waterways, Republic of Serbia

- Activities planned in Serbia-

Predrag Zivadinovic, MSc Civil Eng.

*Activities planned in Serbia (PLOVPUT)
Danube Commission, Budapest, 05.03.2025.*

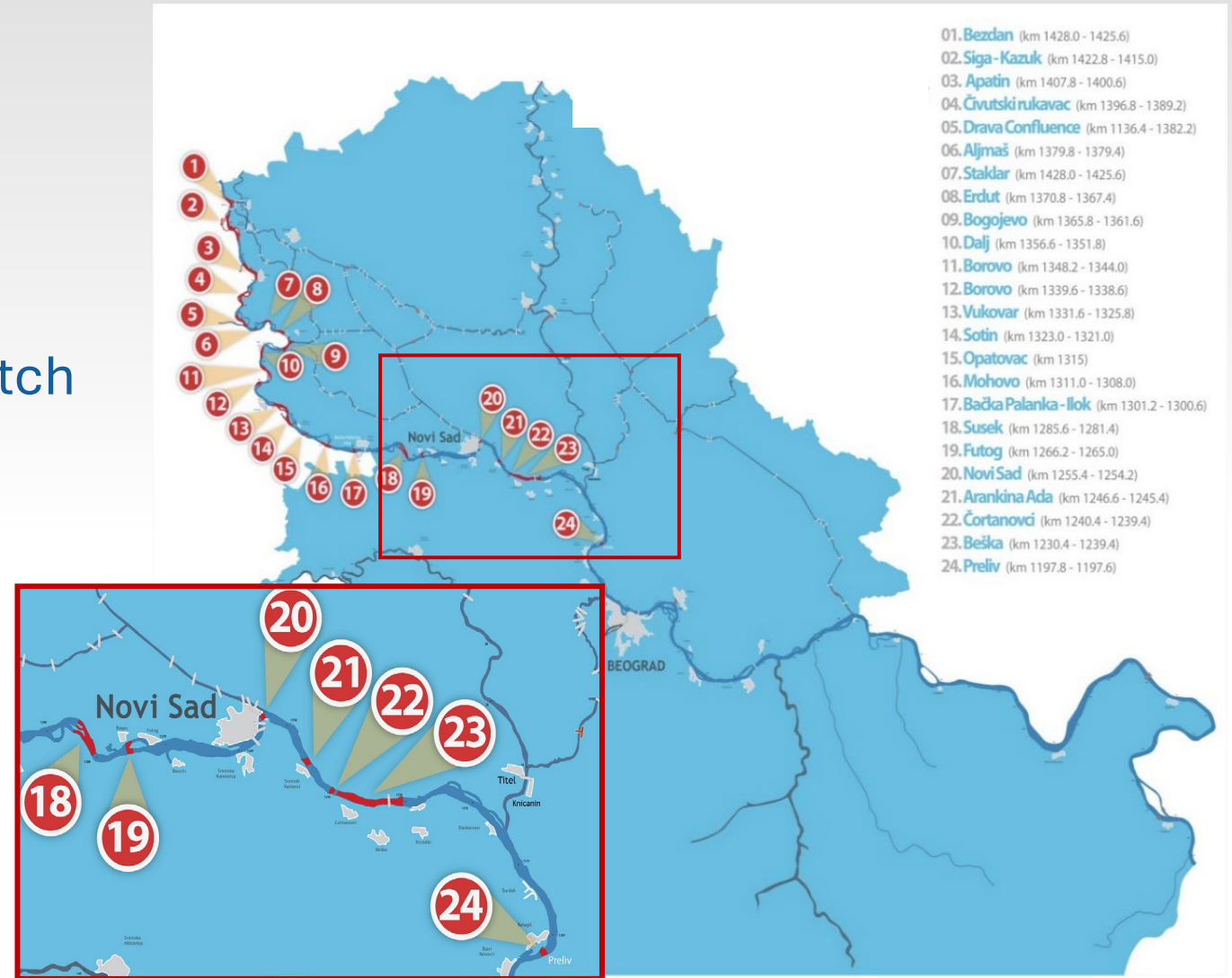


*Republic of Serbia
Ministry of Construction, Transport and Infrastructure
Directorate for Inland Waterways*



Critical sectors (CS) for navigation on the Danube

- 24 CS on the Danube
 - 17 SRB-CRO common stretch
 - 7 exclusively SRB



Activities on the common SRB-CRO sector

Data Collection, hydraulic and morphological modelling of the Danube River and the Sava River in the Republic of Serbia

- Outputs:

- ✓ • 1D hydraulic model for the entire Serbian and Croatian common Danube stretch + ENR 2023
- ✓ • Redefinition and prioritization of navigational bottlenecks
- ✓ • Definition of parameters for the multi-criteria analysis
- ⚠ • Definition of alternative solutions for prioritized sectors and hydrodynamic and morphological 2D modelling
- ✗ • Development of the integrated study on alternative solutions and definition of next steps for future investments.



exp. 06/2025

Activities on the SRB sector

- 7 CS
 - 18. Susek
 - 19. Futog
 - 20. Novi Sad
 - 21. Arankina Ada
 - 22. Čortanovci
 - 23. Beška
 - 24. Preliv



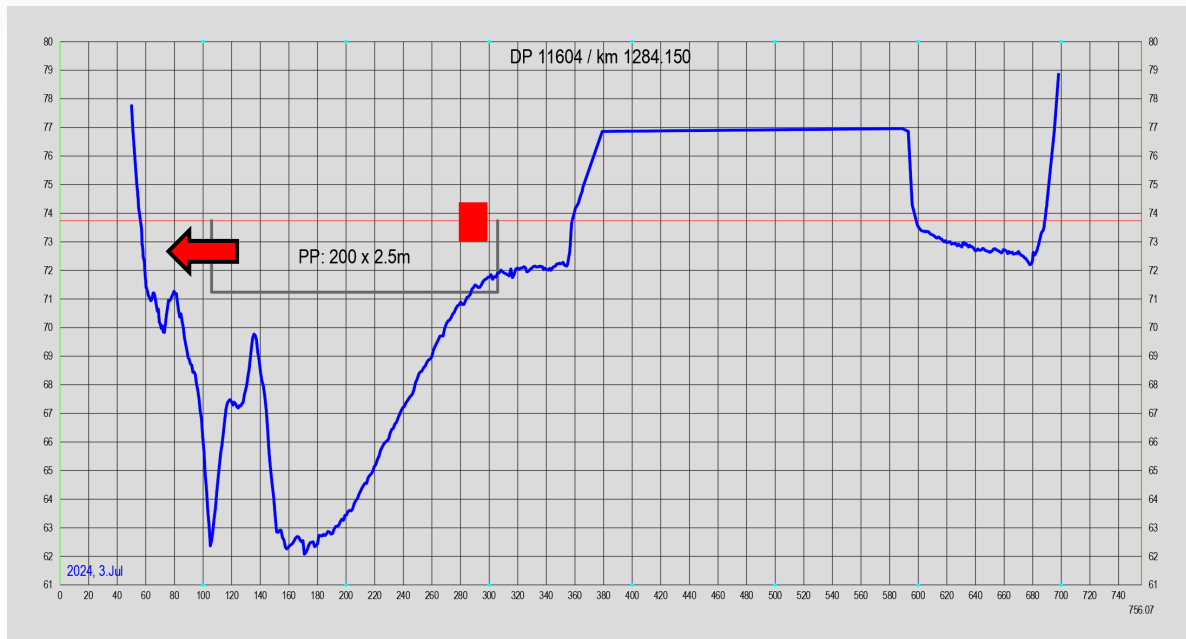
CS Susek (km 1287+000 – km 1281+000)

Gauging Station Bačka Palanka

„0“=73.97mm,ENR=47cm,HNL=578cm

Critical CS: km 1284+150

- min fairway depth: 2m
- available width: 175m (200m)

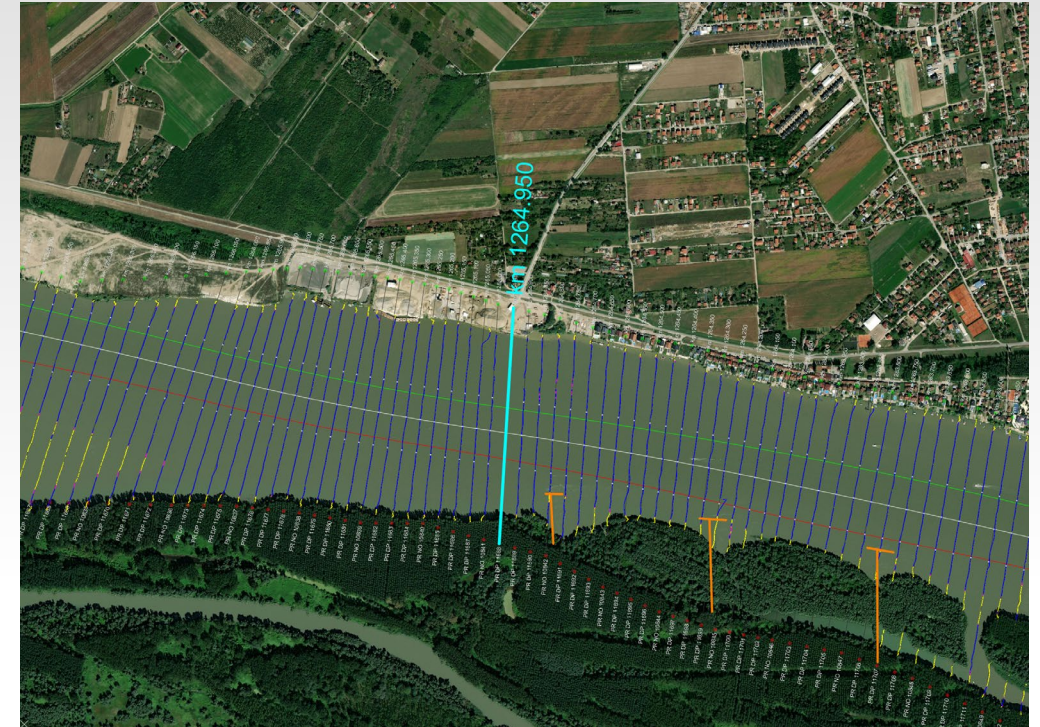
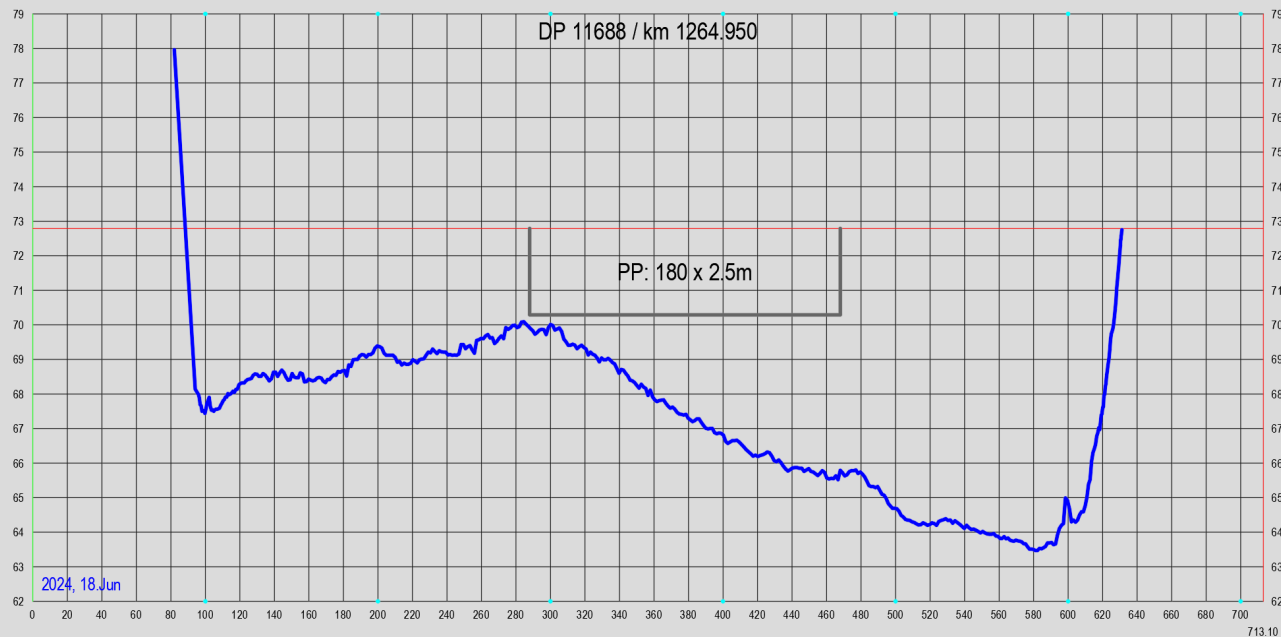


- 2024: Number of days on GS Backa Palanka with water level $H < H_{req}$: 15
- Regular monitoring & surveying

CS Futog (km 1267+400 – km 1261+600)

Critical CS: km 1264+950

- min fairway depth: 2.7m
- available width: 180m



- Favorable morphological development of the riverbed was achieved by the construction of an detached groin (km 1263+350) and a chevron (km 1262+800)
- 2024: Number of days on GS Novi Sad with water level $H < H_{req}$: 0

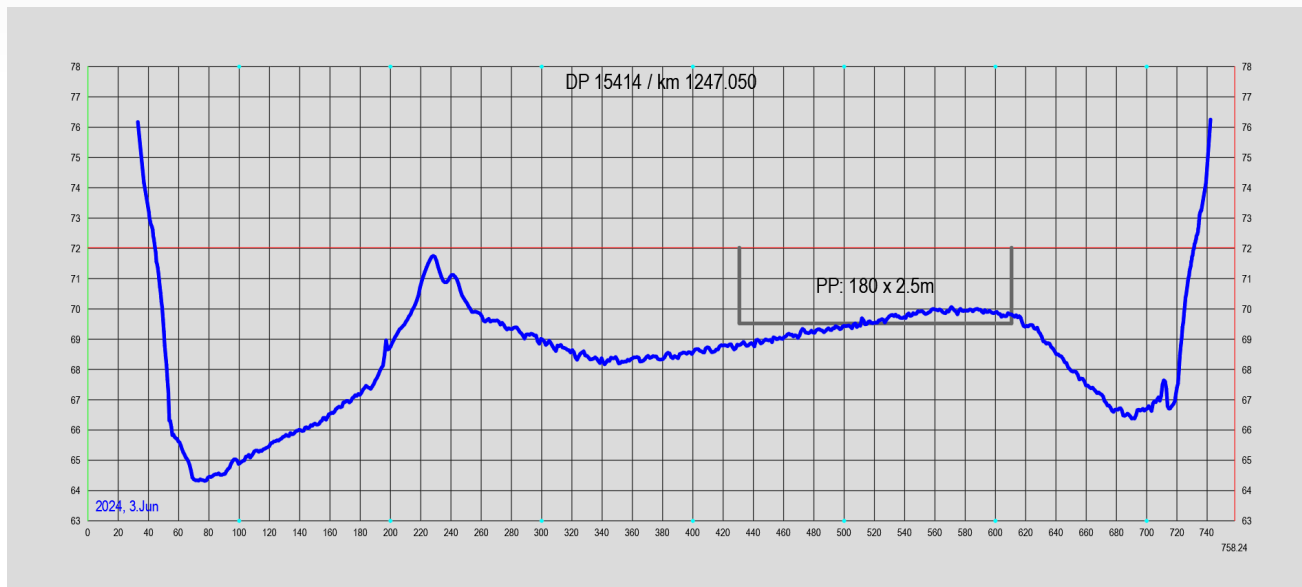
CS Arankina Ada (km 1248+000 – km 1244+800)

Gauging Station Novi Sad

„0“=71.73mm, ENR=57cm, HNL=574cm

Critical CS: km 1247+050

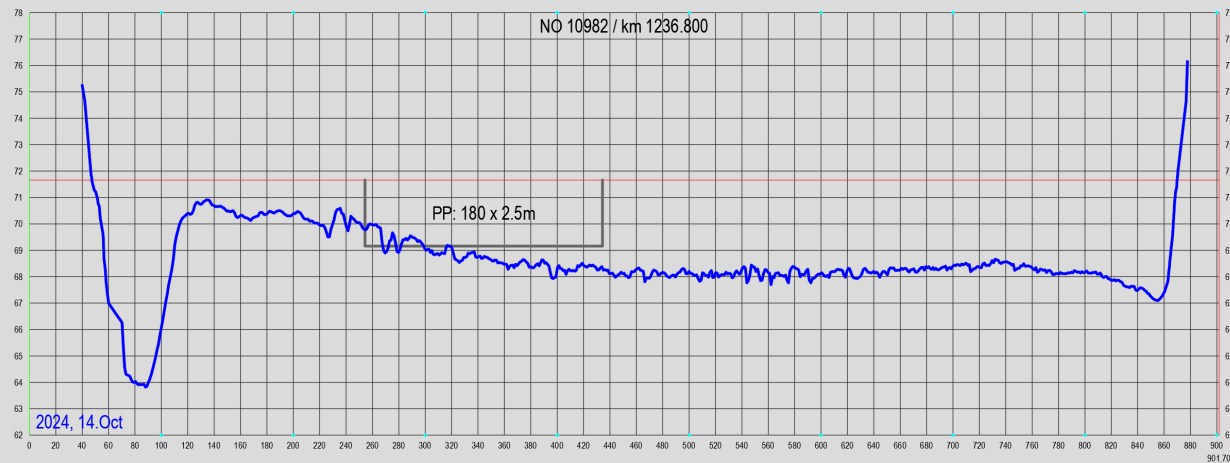
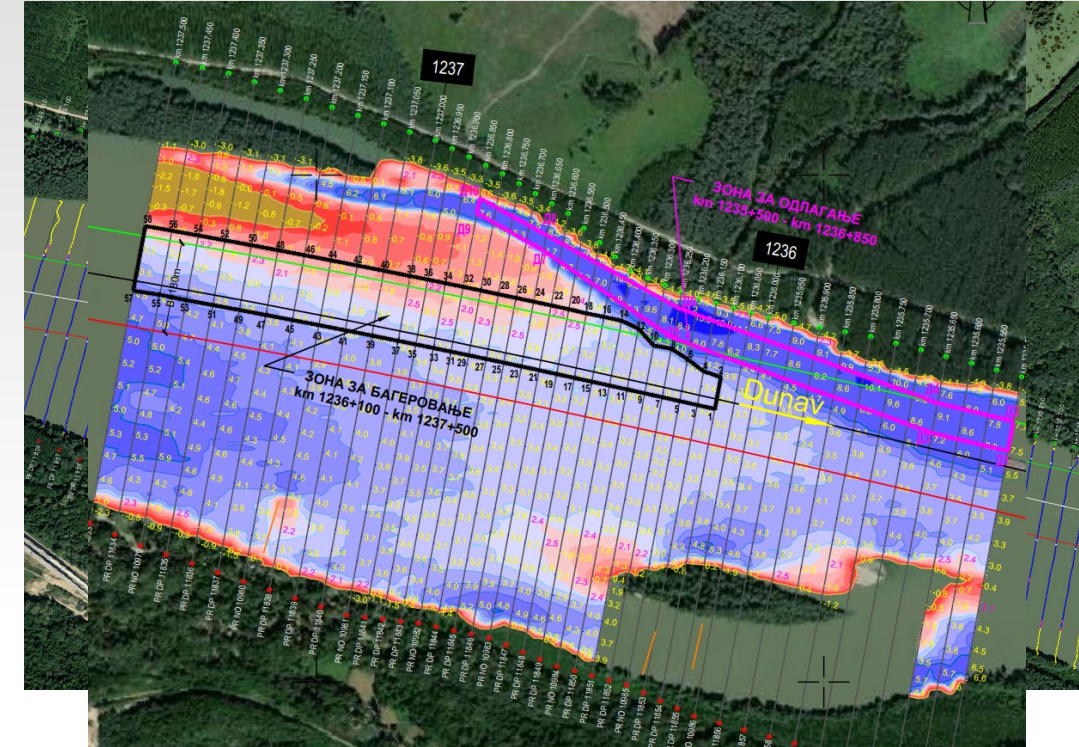
- min fairway depth: 2m
- available width: 180m



- Required water level for fairway dimensions 2,5/180 on GS Novi Sad: $H_{req}=111\text{cm}$
- 2024: Number of days on GS Novi Sad with water level $H < H_{req}$: 46

CS Čortanovci (km 1241+600 – km 1235+000)

- Critical CS: km 1236+500 – km 1237+200
 - Available width: 180m
 - Dynamically changing over time
 - Sandbank shifting from right → left



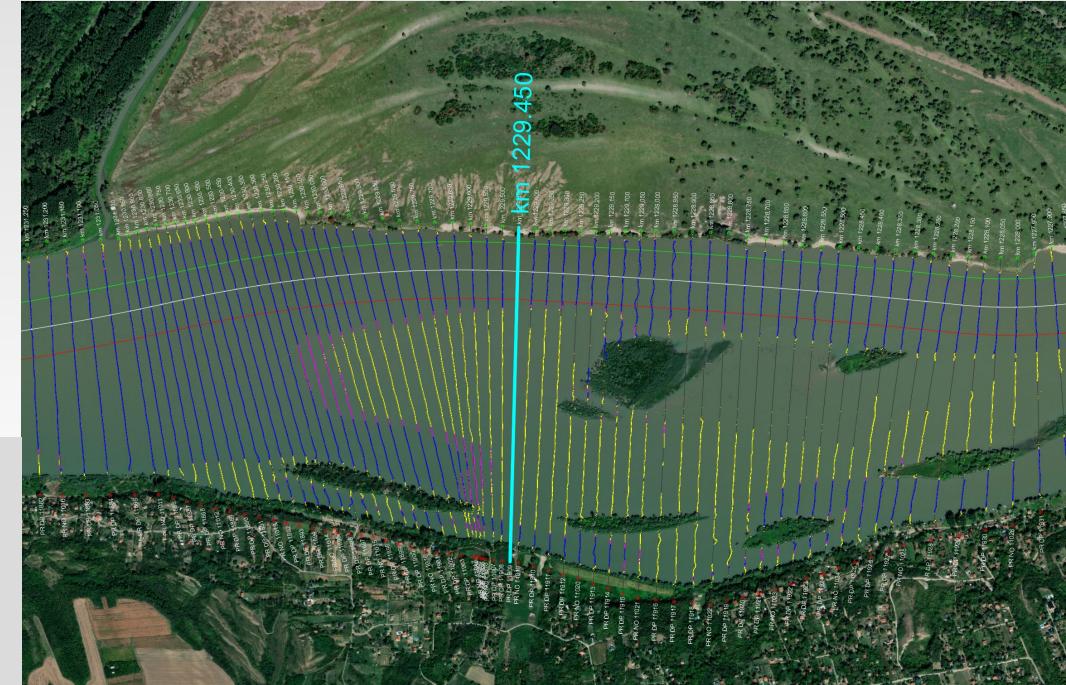
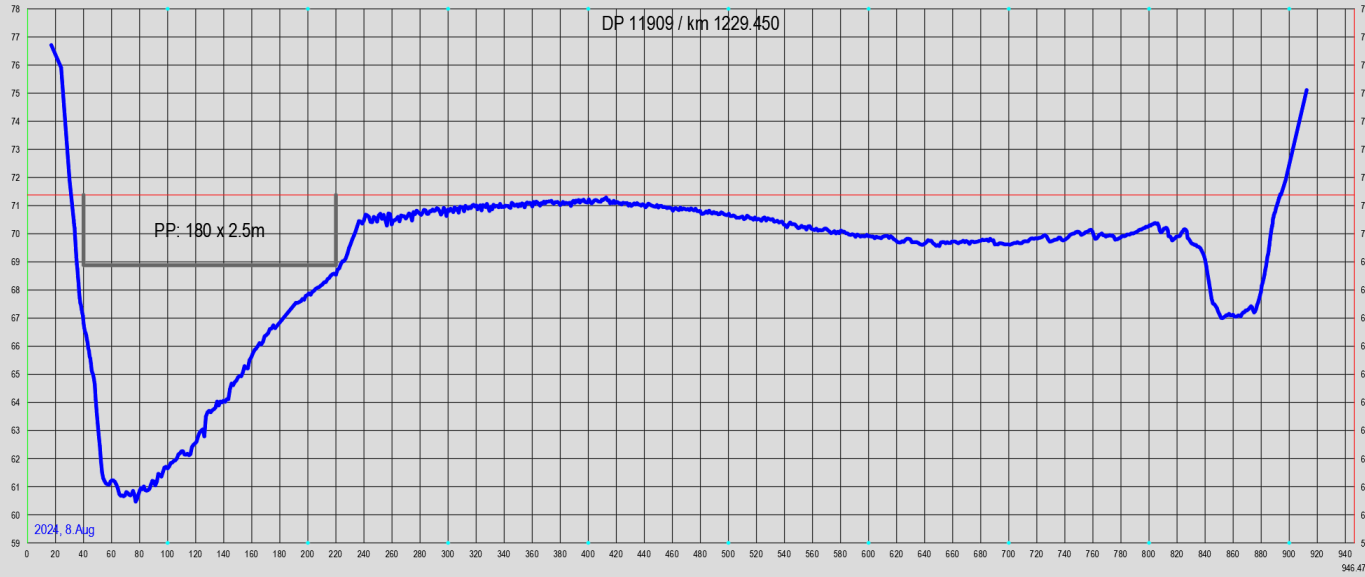
- 2024: Left bank “endangered”
- Apr 2024: ~48.000m³ dredged
- Apr 2025: ~137.000 m³ dredged (ongoing)
- Intense monitoring & surveying

CS Beška (km 1232+000 – km 1226+600)

Gauging Station Slankamen

„0“=69.68mm, ENR=117cm, HNL=623cm

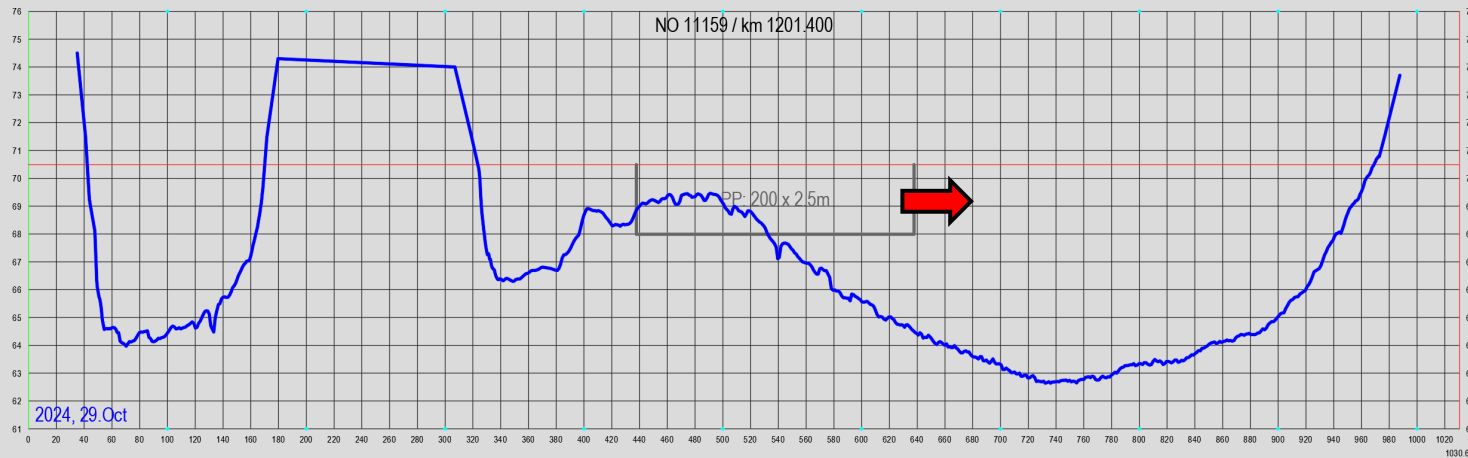
- Critical CS: km 1229+450
 - Min fairway depth: 2.7m
 - Available width: 180m



- 2024: Number of days on GS Slankamen with water level $H < H_{req}$: 6
- Regular monitoring & surveying

CS Preliv (km 1207+000 – km 1195+000)

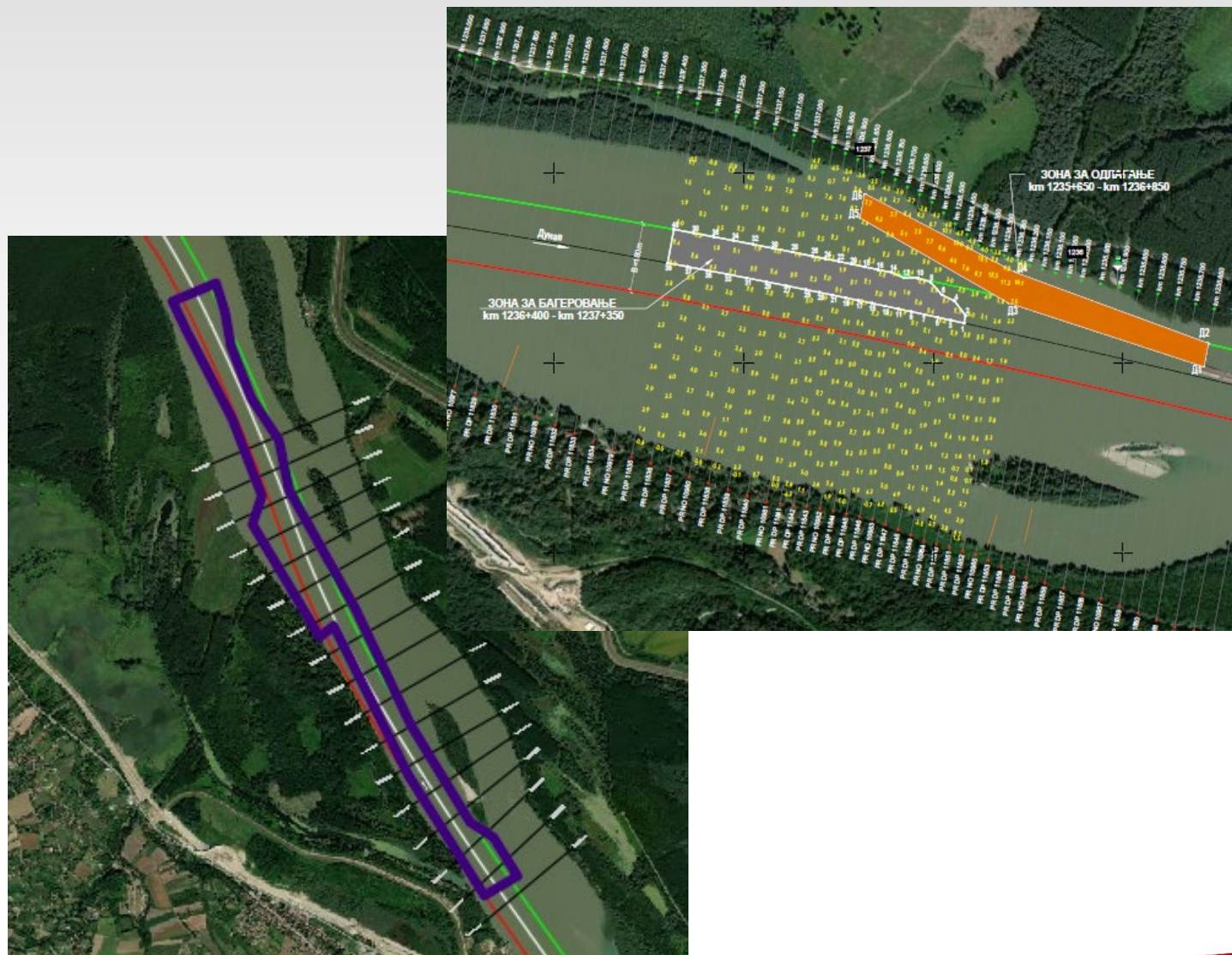
- Critical CS: km 1201+400
 - Available width: 200m
 - Significant changes in 2024



- Intense monitoring & surveying
- Proper marking
- Re-alignment

Planned activities in 2025 (km 1295+500 - km 845+600)

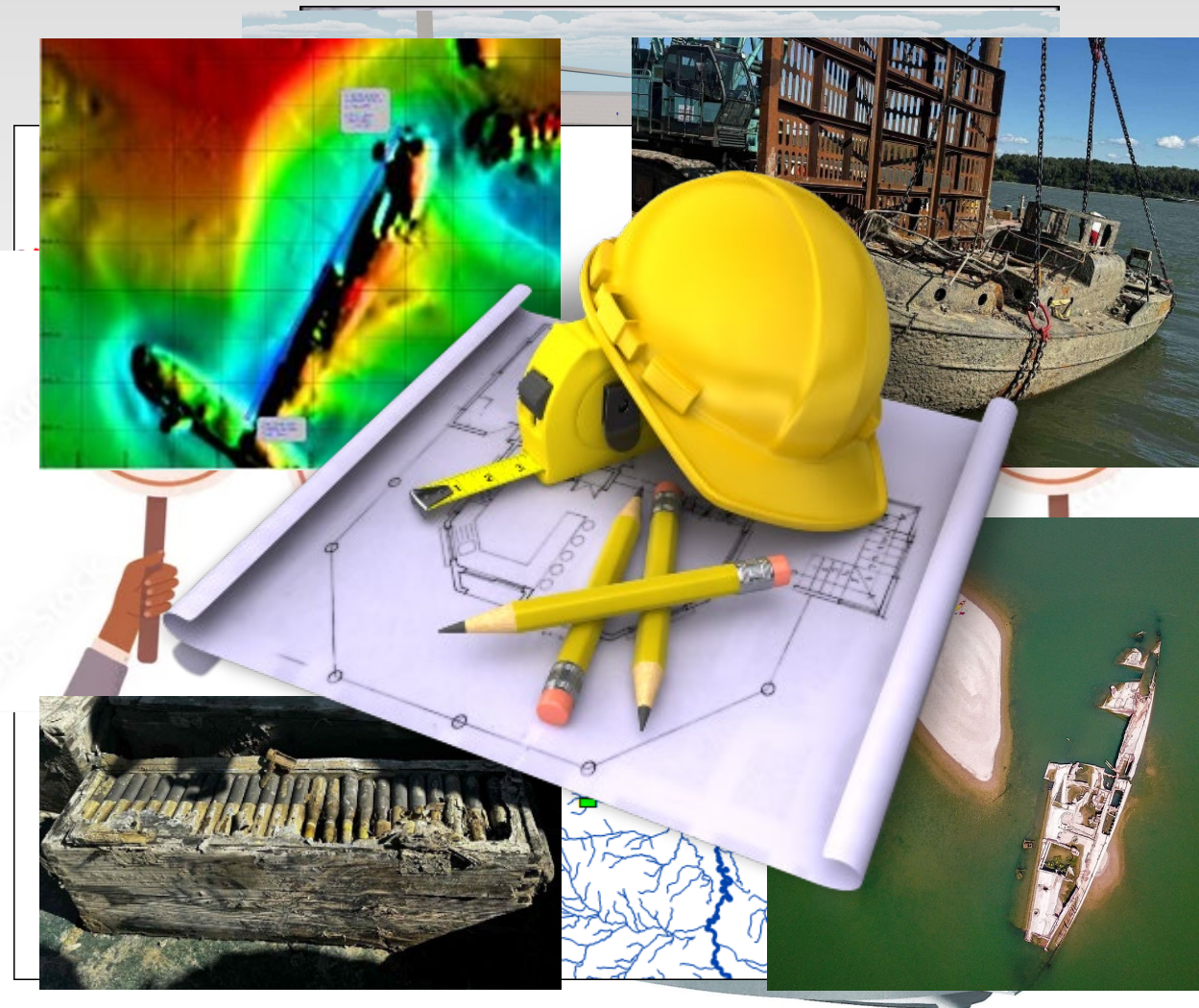
- Dredging works
 - CS Čortanovci (Q2 2025)
 - CS Arankina Ada (expected)
- Hydrographic surveys
 - CS prioritized (Preliv, Čortanovci, Futog)
 - Dredging plan
 - Allocated 2.5 mil. € (2025)





International projects - ongoing

- Marking vessel (exp. Q4 2025) & Hydrographic vessel (exp. Q2 2025)
- Network of Hydro-Meteo Stations (exp. Q3 2026)
- River training and dredging works on the Sava River - the Drina Confluence (exp. Q2 2027)
- UXO Survey and Removal of sunken German fleet (exp. Q3 2028)
- Construction of the new lock on the Tisa River (design phase)



DANUBE COMMISSION

Expert Meeting on Hydrotechnical Issues
March 5, 2025, Budapest

THANK YOU FOR YOUR KIND ATTENTION



Predrag Zivadinovic, MSc Civil Eng.
e-mail: pzivadinovic@plovpup.rs

Ministry of Construction, Transport and Infrastructure - Directorate For Inland Waterways, Plovpup

