

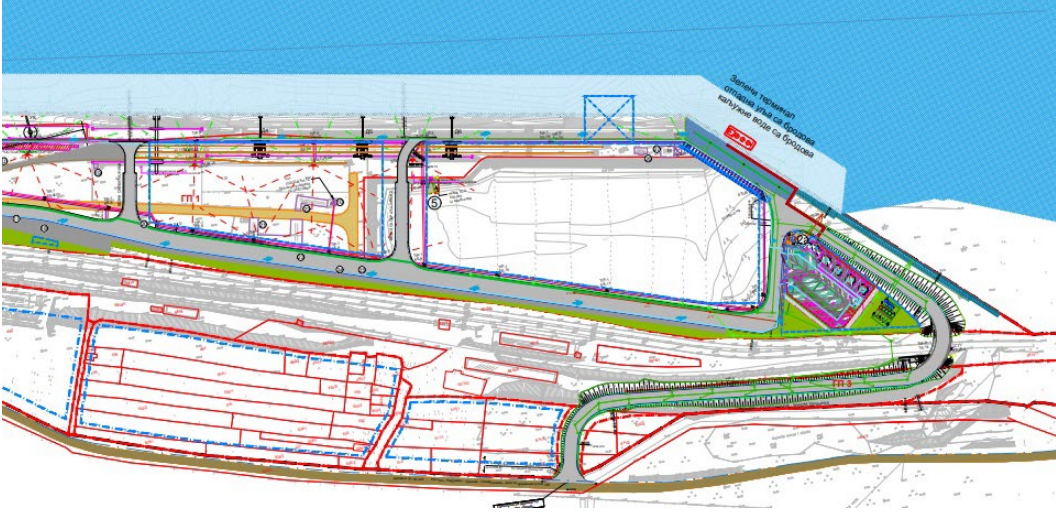


Republic of Serbia  
Ministry of construction, transport  
and infrastructure

# Expansion of the Capacity of the Port of Prahovo

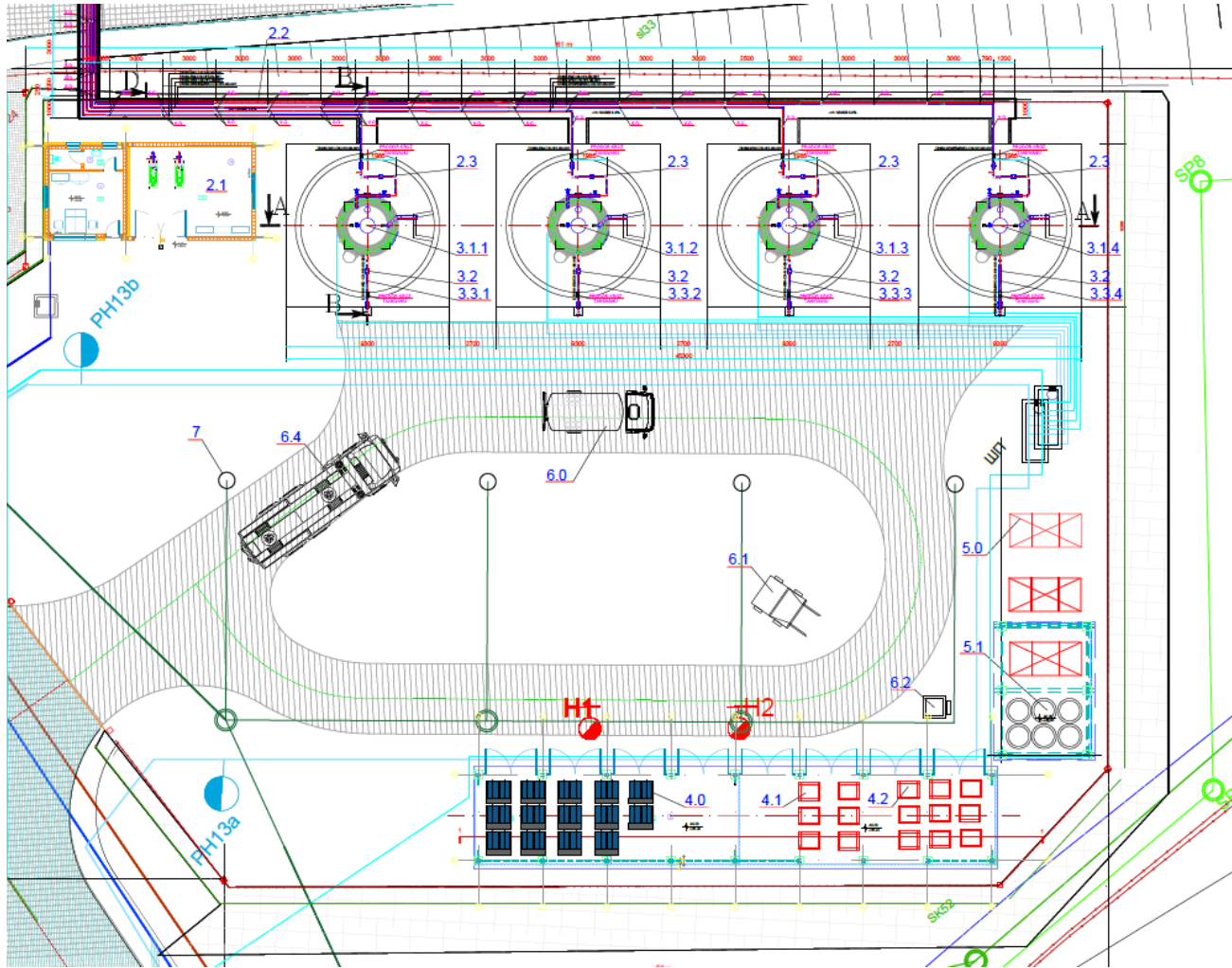
Expert Meeting on the Development of  
Ports and Port Operations  
April 2026

# Expansion of the Capacity of the Port of Prahovo



<p><b>Project Objective</b></p>	<ul style="list-style-type: none"> <li>• Reconstruction of existing and construction of new port infrastructure facilities (internal road network including a road bridge and parking area, railway tracks, mechanical workshop with a spare parts warehouse, transformer station with associated infrastructure installations), as well as the construction of an administrative building;</li> <li>• Construction of a “Green Terminal”, the first facility of this type in the Republic of Serbia;</li> </ul>
<p><b>Project Significance</b></p>	<ul style="list-style-type: none"> <li>• The modernised Port of Prahovo will become an important hub for transport and economic development in Eastern Serbia, as well as along the Danube Corridor;</li> <li>• Provision of facilities for the reception of ship-generated waste (waste oils, bilge water, and other waste streams);</li> </ul>
<p><b>Project Value</b></p>	<p><b>EUR 45,500,000</b> Funded by the Budget of the Republic of Serbia – 100%</p>
<p><b>Project Status</b></p>	<ul style="list-style-type: none"> <li>• Contractor and supervision selected;</li> <li>• Works commenced in July 2025;</li> <li>• Project duration: 40 months</li> </ul>

# Expansion of the Capacity of the Port of Prahovo – Green Terminal



## Green Terminal

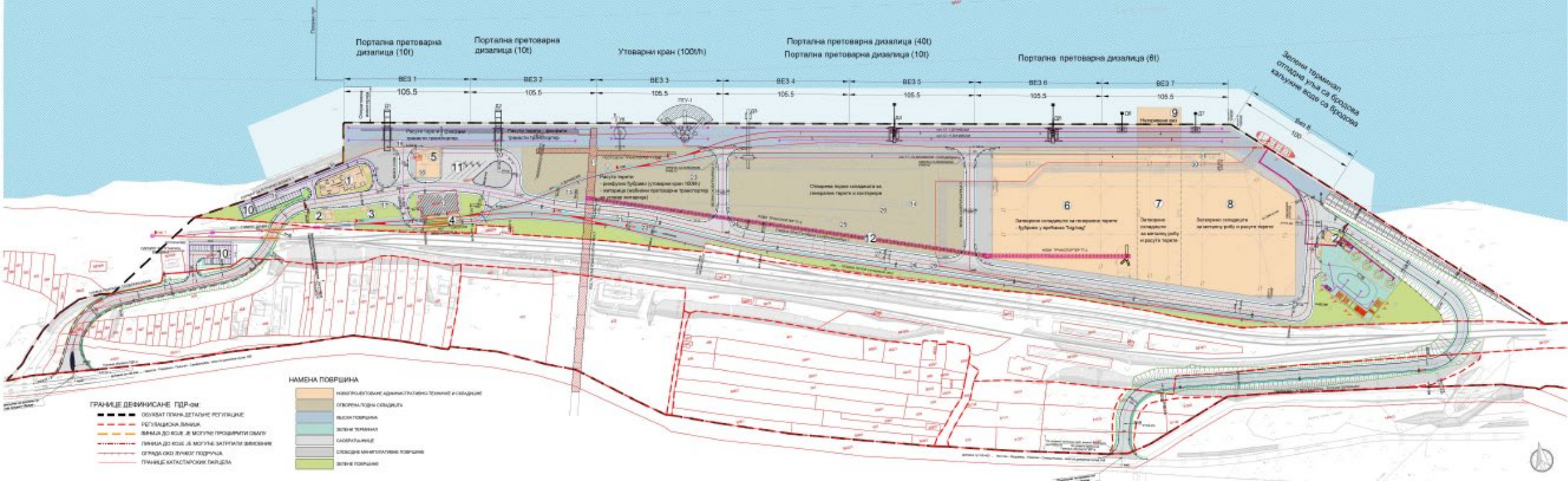
The Green Terminal comprises:

- a pumping station
- storage tanks with containment basins for hazardous liquid ship-generated waste
- a covered area for non-hazardous waste
- a covered area with partition walls for hazardous waste
- an operational platform
- an internal road network

## Access

- newly designed internal port road infrastructure;
- a new external access road at the Green Terminal, including a road bridge over the railway line and associated infrastructure

# Expansion of the Capacity of the Port of Prahovo



# Expansion of the Capacity of the Port of Prahovo – Dredging and Land Reclamation Works at the Winter Harbour



August 2025



September 2025



November 2025



April 2026

# Expansion of the Capacity of the Port of Prahovo



## Implementation Plan for 2026

- completion of land reclamation works for the purposes of constructing the Green Terminal;
- construction of the Green Terminal quay;
- construction of the administrative building;
- construction of the road bridge;
- reconstruction and construction of port railway tracks

## Long-term Development Plan

- reconstruction of existing berths 1–7;
- increase of cargo throughput from the current 1.4 million tonnes to approximately 3.2 million tonnes annually

Thank you for your attention!